



BOARD OF EDUCATION

John Abraham
David Banks
Alison Bartlett
Holli Cash
John Crooks
Lynda Crowder-Eagle
David Morgan

For Immediate Release

For more information contact:

May 26, 2009

Jay Dillon (770) 426-3345

SUPERINTENDENT

Fred Sanderson

Cobb high school students show gains, continue to top state and metro area on graduation test

Cobb County 11th graders increased their average score in three of four content areas on the 2009 Georgia High School Graduation test. Recently released GHSGT results show that Cobb County students also once again surpassed statewide average scores in all four subject areas, as well as the average score of a comparison group of metro Atlanta districts.

In fact, 85 percent of Cobb students passed all four content area tests this spring – English/Language Arts, Math, Social Studies and Science – compared to just 80 percent statewide. Cobb’s passing rate increased by one (1) percentage point in each content area except for Science, where it remained unchanged from 2008 (see Table I). Cobb County as a district has outperformed the state in each of the four subject areas for five consecutive years (See Table I).

Earlier this school year, district administrators outlined an aggressive plan to improve high school performance; results from this spring’s GHSGT seem to indicate that the plan is having an impact. The 2009 results include several noteworthy areas of gain, especially among subgroups of students whose performance is a critical component of whether schools make Adequate Yearly Progress under the No Child Left Behind Act. Almost all district schools increased their average scale score on the English Language Arts test, and two out every three students district-wide scored at an advanced proficiency level. The English Language Arts scale scores for Wheeler students increased 12 points, while Kell and Pope High Schools scored 10 points higher than last year. “It is a tribute to the efforts of the English Language Arts teachers across the District, guiding their students to an understanding of the standards being taught,” said Carolyn Waters, supervisor for high school English Language Arts. “This is the second year of testing under the statewide Georgia Performance Standards curriculum. Clearly our instruction is aligning with state expectations.”

Math performance also increased this year with 97 percent of Cobb students meeting or exceeding standards, a 1 percent gain from 2008. A noteworthy achievement in Math is that English Language Learners increased their passing score by 13 points over last year. Another subgroup, Students With Disabilities, saw 84 percent of students meet or exceed standards this year, an increase of 7 percent. Nearly two thirds of all students exceeded the basic

proficiency levels in Math on this year's test. At Lassiter, Pope and Walton high schools, 100 percent of students passed the Mathematics section.

On the Social Studies test, critical subgroups have steadily increased their passing rate for the last five years. For example, the percentage of English Language Learners passing has increased from 44 percent in 2005 to 59 percent this year. Other significant increases have occurred for Hispanic students (from 63 percent to 74 percent for the same period); Black students (from 70 percent to 79 percent); and Multi-Ethnic students (from 78 percent to 88 percent). Science scores also showed consistent gains over the five-year period for all student subgroups, with most notable gains by Hispanic students (35 percent) and Black students (31 percent). Scores for students qualifying as "English Language Learners" increased thirty-two (32) percent over the same five-year period.

Three Cobb schools saw more than 95 percent of students pass all portions of the GHS GT (see Table IV). At Walton High School, more than 80 percent of the students reached the more advanced Pass Plus proficiency level in all four content areas. Lassiter and Pope high schools both had more than 75 percent of their students achieve the Pass Plus level in English/Language Arts, Mathematics, and Science. And 77 percent of students at Harrison achieved Pass Plus status in English/Language Arts and Mathematics. (See Table II).

Students take the GHS GT for the first time in the spring of the 11th grade. Schools use the results to identify students who need additional instruction in the academic content determined by Georgia educators as necessary for a high school diploma. Students who do not succeed on their first attempt have four additional opportunities to meet the standards prior to completing 12th grade.

The English/Language Arts and Science portions of GHS GT are based on the new Georgia Performance Standards curriculum rather than the previous Quality Core Curriculum. As with any new assessment, a period of adjustment is often reflected in the mean scale scores and passing rates. The GPS assessments are of a higher caliber and are based on performance standards.

As part of the statewide testing program, 11th grade students are administered the GHS GT each spring. They are tested in four subject areas — English/Language Arts, Mathematics, Social Studies and Science — and must pass each section to earn a Georgia high school diploma. In Mathematics and Social Studies, scores range from 400-600, with 500 as a passing score; in English/Language Arts and Science scores range from 100 to 300 with 200 as a passing score. Results for the system, state, metro area (RESA— Regional Educational Service Agencies) and individual schools are listed in Table I.

The English/Language Arts, Mathematics, Social Studies and Science portions of the Georgia High School Graduation Test were administered to all 11th graders in March. Students have four opportunities to pass each section of the test before graduation.

Tables IIIA - IIID provide program summary data for each content area tested.

###

**COBB COUNTY SCHOOL DISTRICT
 GEORGIA HIGH SCHOOL GRADUATION TEST
 MEAN SCALE SCORE and PERCENT PASSING FOR FIRST TIME 11TH GRADE TEST TAKERS
 SPRING 2009**

Table I

	ENGLISH/LANGUAGE ARTS						MATHEMATICS						SOCIAL STUDIES						SCIENCE					
	SS	PERCENT PASSING					SS	PERCENT PASSING					SS	PERCENT PASSING					SS	PERCENT PASSING				
	2009	2009	2008	2007	2006	2005	2009	2009	2008	2007	2006	2005	2009	2009	2008	2007	2006	2005	2009	2009	2008	2007	2006	2005
System	246	94	93	99	99	99	543	97	96	97	97	97	526	91	90	95	93	92	241	90	90	83	83	81
RESA**	240	91	na	99	98	97	537	93	na	94	95	95	524	88	na	92	90	88	238	88	na	78	77	74
State	237	90	89	98	98	97	535	94	93	95	95	95	522	87	86	91	89	87	236	88	86	77	76	71
Allatoona*	245	99	na	na	na	na	540	99	na	na	na	na	522	92	na	na	na	na	236	94	na	na	na	na
Campbell	239	89	89	99	99	98	535	95	94	96	96	95	521	83	86	91	89	84	233	82	85	75	76	65
Devereux	TFC	TFC	TFC	TFC	na	na	TFC	TFC	TFC	TFC	na	na	TFC	TFC	TFC	TFC	na	na	TFC	TFC	TFC	TFC	na	na
Harrison	254	99	97	100	99	100	550	99	98	100	99	100	530	96	97	98	98	97	247	98	96	89	91	90
Hillgrove	245	96	96	100	na	na	543	99	99	97	na	na	527	95	96	96	na	na	240	95	94	78	na	na
Kell	249	97	94	100	99	100	545	99	96	99	99	98	523	92	91	97	95	96	244	95	90	87	84	85
Kennesaw Mtn	249	95	94	100	99	99	547	98	97	99	98	99	527	94	93	97	96	94	243	93	89	88	90	84
Lassiter	258	99	99	100	100	99	557	100	98	99	100	100	538	99	97	99	99	98	254	98	97	96	97	93
McEachern	237	93	91	99	99	98	533	96	95	97	97	98	518	87	88	95	93	93	232	89	89	79	80	80
North Cobb	241	94	91	100	99	98	536	95	94	98	97	97	523	92	87	97	92	92	233	89	87	81	78	77
Oakwood	219	78	73	90	74	91	514	74	83	78	77	71	507	67	61	67	63	52	209	65	63	28	41	26
Osborne	222	83	81	98	97	96	521	88	87	90	89	89	507	66	68	79	76	72	210	63	72	54	52	55
Pebblebrook	227	88	89	99	97	96	526	91	93	95	92	91	513	79	81	88	82	76	218	76	77	68	69	66
Pope	262	99	97	100	100	100	556	100	98	100	100	100	535	98	96	98	98	98	257	98	98	95	94	94
South Cobb	232	89	90	99	97	98	530	94	90	97	95	97	517	83	81	87	84	87	229	86	83	68	60	66
Sprayberry	242	94	96	99	99	99	538	97	96	98	99	98	524	90	89	94	93	95	234	88	90	80	80	85
Walton	266	99	99	100	100	100	561	100	100	100	100	100	540	99	98	99	99	99	267	99	98	97	97	96
Wheeler	257	96	93	98	99	99	552	98	94	95	98	98	535	95	92	96	95	93	260	94	87	83	85	82

*New school 2008-2009

** RESA (Regional Educational Service Agencies): Cobb, Clayton, DeKalb, Douglas, Fulton, Gwinnett, Atlanta City, Buford City, Decatur City and Marietta City.

COBB COUNTY SCHOOL DISTRICT
GEORGIA HIGH SCHOOL GRADUATION TESTS
GRADE 11 1ST-TIME TEST TAKERS
PERCENTAGES FOR PASS PLUS (Math and Social Studies),
ADVANCED PROFICIENT AND HONORS (English and Science)
SPRING 2009

Table II

	English/Language Arts Scale Score > 234	Math Scale Score > 534	Social Studies Scale Score > 525	Science Scale Score > 234
Cobb (System)	66	61	50	57
RESA **	na	na	na	na
State	na	na	na	na
Allatoona	68	58	45	50
Campbell	54	49	39	46
Devereux	TFC	TFC	TFC	TFC
Harrison	77	77	62	68
Hillgrove	63	62	52	56
Kell	71	65	43	64
Kennesaw Mtn	73	67	54	60
Lassiter	82	80	75	76
McEachern	53	45	33	44
North Cobb	63	49	42	45
Oakwood	29	14	11	20
Osborne	34	25	15	18
Pebblebrook	37	34	23	25
Pope	86	83	73	81
South Cobb	49	41	31	41
Sprayberry	66	59	49	53
Walton	88	90	81	89
Wheeler	74	71	63	71

** RESA (Regional Educational Service Agencies): Cobb, Clayton, DeKalb, Douglas, Fulton, Gwinnett, Atlanta City, Buford City, Decatur City and Marietta City

**COBB COUNTY SCHOOL DISTRICT
 GEORGIA HIGH SCHOOL GRADUATION TEST
 Program Summary
 Spring 2009
 Grade 11 1st-time Test Takers
 English/Language Arts**

Table III A

	2009	
	Scale Score	% Passing
SYSTEM		
Regular Program Students	249	96
Special Education	218	76
Limited English Proficient	205	63
ALLATOONA		
Regular Program Students	246	98
Special Education	233	100
Limited English Proficient	TFC	TFC
CAMPBELL		
Regular Program Students	242	92
Special Education	203	47
Limited English Proficient	187	36
DEVEREUX		
Regular Program Students	TFC	TFC
Special Education	TFC	TFC
Limited English Proficient	TFC	TFC
HARRISON		
Regular Program Students	256	100
Special Education	222	89
Limited English Proficient	TFC	TFC
HILLGROVE		
Regular Program Students	246	96
Special Education	220	85
Limited English Proficient	TFC	TFC
KELL		
Regular Program Students	251	98
Special Education	228	88
Limited English Proficient	TFC	TFC
KENNESAW MTN		
Regular Program Students	252	98
Special Education	209	63
Limited English Proficient	TFC	TFC
LASSITER		
Regular Program Students	261	99
Special Education	231	97
Limited English Proficient	TFC	TFC
MCEACHERN		
Regular Program Students	238	95
Special Education	217	77
Limited English Proficient	TFC	TFC

	2009	
	Scale Score	% Passing
NORTH COBB		
Regular Program Students	244	96
Special Education	205	67
Limited English Proficient	208	71
OAKWOOD		
Regular Program Students	220	78
Special Education	TFC	TFC
Limited English Proficient	TFC	TFC
OSBORNE		
Regular Program Students	224	87
Special Education	202	51
Limited English Proficient	202	57
PEBBLEBROOK		
Regular Program Students	230	91
Special Education	201	47
Limited English Proficient	204	55
POPE		
Regular Program Students	266	100
Special Education	234	95
Limited English Proficient	TFC	TFC
SOUTH COBB		
Regular Program Students	236	92
Special Education	201	54
Limited English Proficient	207	57
SPRAYBERRY		
Regular Program Students	246	97
Special Education	216	75
Limited English Proficient	197	60
WALTON		
Regular Program Students	268	99
Special Education	244	98
Limited English Proficient	221	76
WHEELER		
Regular Program Students	258	97
Special Education	224	67
Limited English Proficient	216	83

TFC = fewer than 10 students tested

**COBB COUNTY SCHOOL DISTRICT
 GEORGIA HIGH SCHOOL GRADUATION TEST
 Program Summary
 Spring 2009
 Grade 11 1st-time Test Takers
 Mathematics**

Table III B

	2009	
	Scale Score	% Passing
SYSTEM		
Regular Program Students	544	98
Special Education	520	84
Limited English Proficient	520	88
ALLATOONA		
Regular Program Students	542	100
Special Education	525	94
Limited English Proficient	TFC	TFC
CAMPBELL		
Regular Program Students	537	97
Special Education	509	67
Limited English Proficient	511	81
DEVEREUX		
Regular Program Students	TFC	TFC
Special Education	TFC	TFC
Limited English Proficient	TFC	TFC
HARRISON		
Regular Program Students	551	100
Special Education	526	97
Limited English Proficient	TFC	TFC
HILLGROVE		
Regular Program Students	544	100
Special Education	521	82
Limited English Proficient	TFC	TFC
KELL		
Regular Program Students	547	99
Special Education	528	97
Limited English Proficient	TFC	TFC
KENNESAW MTN		
Regular Program Students	549	99
Special Education	518	84
Limited English Proficient	TFC	TFC
LASSITER		
Regular Program Students	559	100
Special Education	534	100
Limited English Proficient	TFC	TFC
MCEACHERN		
Regular Program Students	534	97
Special Education	516	81
Limited English Proficient	TFC	TFC

	2009	
	Scale Score	% Passing
NORTH COBB		
Regular Program Students	538	97
Special Education	508	71
Limited English Proficient	512	79
OAKWOOD		
Regular Program Students	514	76
Special Education	TFC	TFC
Limited English Proficient	TFC	TFC
OSBORNE		
Regular Program Students	523	91
Special Education	504	69
Limited English Proficient	515	87
PEBBLEBROOK		
Regular Program Students	528	95
Special Education	504	59
Limited English Proficient	513	72
POPE		
Regular Program Students	558	100
Special Education	538	98
Limited English Proficient	TFC	TFC
SOUTH COBB		
Regular Program Students	532	96
Special Education	512	78
Limited English Proficient	516	80
SPRAYBERRY		
Regular Program Students	540	98
Special Education	520	89
Limited English Proficient	524	90
WALTON		
Regular Program Students	563	100
Special Education	539	98
Limited English Proficient	546	100
WHEELER		
Regular Program Students	553	99
Special Education	517	83
Limited English Proficient	532	100

TFC = fewer than 10 students tested

COBB COUNTY SCHOOL DISTRICT
GEORGIA HIGH SCHOOL GRADUATION TEST
Program Summary
Spring 2009
Grade 11 1st-time Test Takers
Social Studies

Table III C

	2009	
	Scale Score	% Passing
SYSTEM		
Regular Program Students	527	92
Special Education	512	71
Limited English Proficient	504	59
ALLATOONA		
Regular Program Students	523	93
Special Education	513	82
Limited English Proficient	TFC	TFC
CAMPBELL		
Regular Program Students	522	85
Special Education	501	48
Limited English Proficient	492	33
DEVEREUX		
Regular Program Students	TFC	TFC
Special Education	TFC	TFC
Limited English Proficient	TFC	TFC
HARRISON		
Regular Program Students	532	97
Special Education	511	79
Limited English Proficient	TFC	TFC
HILLGROVE		
Regular Program Students	529	97
Special Education	513	67
Limited English Proficient	TFC	TFC
KELL		
Regular Program Students	524	92
Special Education	517	87
Limited English Proficient	TFC	TFC
KENNESAW MTN		
Regular Program Students	528	96
Special Education	510	70
Limited English Proficient	TFC	TFC
LASSITER		
Regular Program Students	539	99
Special Education	530	100
Limited English Proficient	TFC	TFC
MCEACHERN		
Regular Program Students	519	89
Special Education	507	58
Limited English Proficient	TFC	TFC

	2009	
	Scale Score	% Passing
NORTH COBB		
Regular Program Students	524	93
Special Education	507	71
Limited English Proficient	504	64
OAKWOOD		
Regular Program Students	507	69
Special Education	TFC	TFC
Limited English Proficient	TFC	TFC
OSBORNE		
Regular Program Students	508	70
Special Education	496	27
Limited English Proficient	495	37
PEBBLEBROOK		
Regular Program Students	514	82
Special Education	502	53
Limited English Proficient	498	50
POPE		
Regular Program Students	536	99
Special Education	523	95
Limited English Proficient	TFC	TFC
SOUTH COBB		
Regular Program Students	518	87
Special Education	502	46
Limited English Proficient	499	50
SPRAYBERRY		
Regular Program Students	525	93
Special Education	512	73
Limited English Proficient	502	50
WALTON		
Regular Program Students	541	99
Special Education	528	96
Limited English Proficient	512	92
WHEELER		
Regular Program Students	536	96
Special Education	513	67
Limited English Proficient	526	95

TFC = fewer than 10 students tested

**COBB COUNTY SCHOOL DISTRICT
 GEORGIA HIGH SCHOOL GRADUATION TEST
 Program Summary
 Spring 2009
 Grade 11 1st-time Test Takers
 Science**

Table III D

	2009	
	Scale Score	% Passing
SYSTEM		
Regular Program Students	243	93
Special Education	219	71
Limited English Proficient	208	57
ALLATOONA		
Regular Program Students	238	94
Special Education	223	89
Limited English Proficient	TFC	TFC
CAMPBELL		
Regular Program Students	235	86
Special Education	200	45
Limited English Proficient	191	41
DEVEREUX		
Regular Program Students	TFC	TFC
Special Education	TFC	TFC
Limited English Proficient	TFC	TFC
HARRISON		
Regular Program Students	249	99
Special Education	222	80
Limited English Proficient	TFC	TFC
HILLGROVE		
Regular Program Students	242	96
Special Education	221	75
Limited English Proficient	TFC	TFC
KELL		
Regular Program Students	244	96
Special Education	237	90
Limited English Proficient	TFC	TFC
KENNESAW MTN		
Regular Program Students	246	95
Special Education	215	73
Limited English Proficient	TFC	TFC
LASSITER		
Regular Program Students	256	98
Special Education	234	98
Limited English Proficient	TFC	TFC
MCEACHERN		
Regular Program Students	233	90
Special Education	211	58
Limited English Proficient	TFC	TFC

	2009	
	Scale Score	% Passing
NORTH COBB		
Regular Program Students	235	91
Special Education	206	53
Limited English Proficient	204	50
OAKWOOD		
Regular Program Students	209	65
Special Education	TFC	TFC
Limited English Proficient	TFC	TFC
OSBORNE		
Regular Program Students	212	65
Special Education	195	40
Limited English Proficient	193	26
PEBBLEBROOK		
Regular Program Students	219	78
Special Education	205	53
Limited English Proficient	204	50
POPE		
Regular Program Students	260	99
Special Education	237	91
Limited English Proficient	TFC	TFC
SOUTH COBB		
Regular Program Students	231	90
Special Education	203	51
Limited English Proficient	208	80
SPRAYBERRY		
Regular Program Students	236	89
Special Education	217	75
Limited English Proficient	205	50
WALTON		
Regular Program Students	268	99
Special Education	244	98
Limited English Proficient	234	92
WHEELER		
Regular Program Students	262	96
Special Education	221	55
Limited English Proficient	232	90

TFC = fewer than 10 students tested

**COBB COUNTY SCHOOL DISTRICT
 GEORGIA HIGH SCHOOL GRADUATION TEST
 Program Summary
 Spring 2009**

Table IV

Percentage of Grade 11 1st-time Test Takers Passing All Four Tests

2009 % Passing All Four Tests	
SYSTEM	85
RESA	81
STATE	80
ALLATOONA	89
CAMPBELL	76
DEVEREUX	TFC
HARRISON	94
HILLGROVE	90
KELL	89
KENNESAW MTN	89
LASSITER	97

2009 % Passing All Four Tests	
MCEACHERN	80
NORTH COBB	83
OAKWOOD	53
OSBORNE	53
PEBBLEBROOK	67
POPE	97
SOUTH COBB	76
SPRAYBERRY	86
WALTON	98
WHEELER	89

TFC = fewer than 10 students tested

COBB COUNTY SCHOOL DISTRICT

TESTING BRIEF

Georgia High School Graduation Tests
Spring 2009

in English Language Arts, Mathematics, Social Studies, and Science

Georgia law (O.C.G.A. §20-2-281 G, (a) mandates that a “curriculum-based assessment be administered in grade 11 for graduation purposes” and (c) “that the State Board of Education shall have the authority to condition the awarding of a high school diploma to a student upon achievement of satisfactory scores on instruments or tests adopted and administered by the State board pursuant to (a) of this code.” The law further provides opportunities for students with disabilities “to take any test adopted by the State Board as a condition for awarding of a high school diploma” and to receive accommodations specified in their IEP as necessary for participation.

The Georgia High School Graduation Tests (GHSGT) assesses only a sample of the knowledge and skills that educators agree comprise a complete high school education. Georgia students have opportunities to learn – and are expected to master – much more than the tests address. The state adopted curriculum is the source of the knowledge and skills assessed on the graduation tests.

Students take the GHSGT for the first time in the spring of the 11th grade. Schools use the results to identify students who need additional instruction in the academic content determined by Georgia educators as necessary for a high school diploma. Students who do not succeed on their first attempt have four additional opportunities to meet the standards prior to completing 12th grade.

Tests based solely on the Georgia Performance standards (GPS) were administered in English Language Arts and Science to grade 11 first time test takers in the Spring 2009 Administration. New cut scores, new scale scores, and new performance descriptions were established for these tests. Comparisons cannot be drawn between ELA and Science GPS scores and older QCC scores.

Grade 11 first time test takers also took a Social Studies test dually aligned to the GPS and the Quality Core Curriculum (QCC) and a Math test based on the older QCC. Both Social Studies and Math were scored and equated to the QCC score scale. These tests can be compared to tests from previous years.

The percentage of students passing the Mathematics portion of the 2009 GHSGT administration increased by seven (7) percentage points from the previous year for Special Education students. Regular Program students’ scores increased by 1 percentage point, and scores for English Language Learners was thirteen (13) percentage points higher than the previous year. The Math mean scale score for Regular Program students (544) reflects an increase of one (1) point. Special Education students and English Language learners each scored an average 520, an increase of five (5) points for both subgroups from 2008. Over the last five years, the percentage passing for Multi Ethnic students increased by 6 percentage points; for Native Americans students the percent passing decreased by 5 percentage points; and for African-American and Hispanic students the percent passing increased by 4 percentage point and 7 percentage points respectively.

In Social Studies the percentage of Regular Program students passing decreased from 2008 to 2009, (-1%), Special Education students (+5) and for English Language Learners (+7). The percent passing for all ethnic groups remained constant or increased by seven percentage points (+7) from 2008 to this year. Native Americans students showed the biggest gain among ethnic subgroups taking the Social Studies test, with a year-to-year increase of 7%.

KEY FINDINGS

ENGLISH LANGUAGE ARTS

- A total of **6,756** Regular Program Grade 11 First-time Test Takers took the ELA test. **Ninety-four (94)** percent met the passing standard with a mean scale score of **246**. This is **higher than the previous year's scale score of 242**.
- A total of **575** Special Education Grade 11 First-time Test Takers took the ELA test. **Seventy-six (76)** percent met the passing standard with a mean scale score of **218**. The percent of **special education students passing in 2008** was **75%, with a scale score of 216**.
- A total of **174** English Language Learner Grade 11 First-time Test Takers took the ELA test. **Sixty-three (63)** percent met the passing standard with a mean scale score of **205**. Last year, **59% of the English language learners met the passing standard** with a scale score of **202**.

MATHEMATICS

- A total of **6,777** Regular Program Grade 11 First-time Test Takers took the Mathematics test. **Ninety-eight (98)** percent met the passing standard with a mean scale score of **544**. This number reflects a **higher scale score than achieved in 2008** by one point, as well as an **increase of one percentage point in the number of students passing**.
- A total of **576** Special Education Grade 11 First-time Test Takers took the Mathematics test. **Eighty-four (84)** percent met the passing standard with a mean scale score of **520**. The percentage of students passing **increased seven percent** and the scale score was **five points higher than the 2008 score of 515**.
- A total of **180** English Language Learner Grade 11 First-time Test Takers took the Mathematics test. **Eighty-eight percent met the passing standard** with a mean scale score of **520**. The percentage of students passing **increased by thirteen percentage points** while the mean scale score **increased by five points from the previous year**.

SOCIAL STUDIES

- A total of **6,749** Regular Program Grade 11 First-time Test Takers took the Social Studies test. **Ninety-two (92)** percent met the passing standard with a mean scale score of **527**. The percentage of students passing **decreased by 1 percentage point** from the previous year, although the mean scale score showed an **increase from 2008 of 1 point**.
- A total of **569** Special Education Grade 11 First-time Test Takers took the Social Studies test. **Seventy-one (71)** percent met the passing standard with a mean scale score of **512**. The percentage of students passing **increased by 5 percentage points** from the previous year and the mean scale score showed an **increase from 2008 of 3 points**.
- A total of **175** English Language Learner Grade 11 First-time Test Takers took the Social Studies test. **Fifty-nine (59)** percent met the passing standard with a mean scale score of **504**. The percentage of students passing **increased by 7 percentage points** from the previous year while the mean scale score **increased from 2008 of 3 points**.

SCIENCE

- A total **6,761** of Regular Program Grade 11 First-time Test Takers took the Science test. **Ninty-three (93)** percent met the passing standard with a mean scale score of **243**. The average scale score remained unchanged from 2008.
- A total of **575** Special Education Grade 11 First-time Test Takers took the Science test. **Seventy-one (71)** percent met the passing standard with a mean scale score of **219**. The **percentage of students passing increased by 2 points** over the previous year, and the average **scale score increased by 5 points**.
- A total of **182** English Language Learner Grade 11 First-time Test Takers took the Science test. **Fifty-seven (57)** percent met the passing standard with a mean scale score of **208**. The average **scale score is 3 points higher** than last year, and the number of students meeting passing standards is **7 points higher than last year**.

Figure 1
 Percent Grade 11 First-time Test Takers Passing GHSGT English Language Arts, Spring Administration
 2005-2009

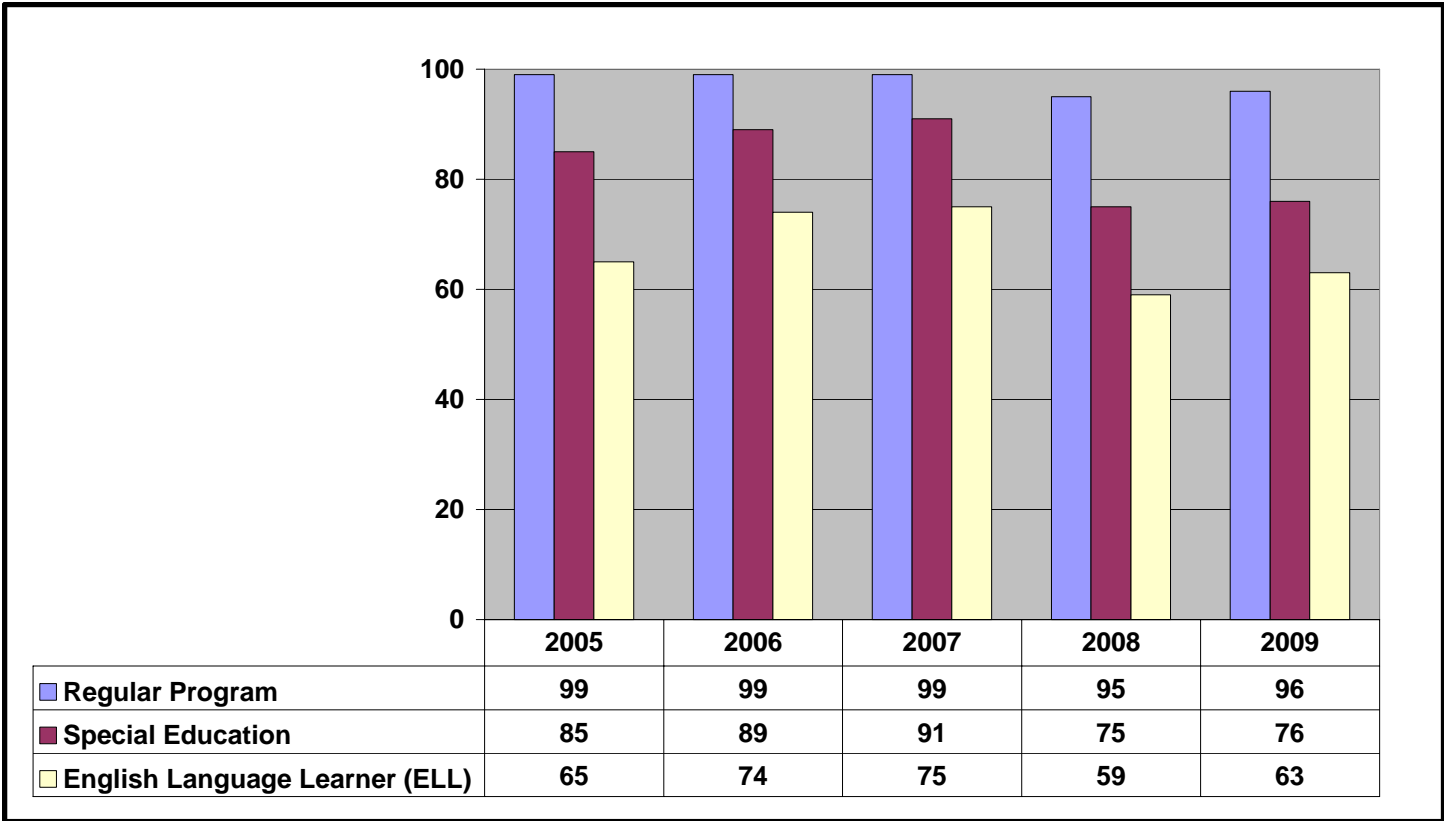


Table 1
 GHSGT English Language Arts, Percent Passing and Five Year Gain Scores by Group, 2005 - 2009

Student Category	Test Year					Gain Scores*
	2005	2006	2007	2008	2009	
Grade 11 Regular Program, First-time Test Takers	99%	99%	99%	95%	96%	Na
Grade 11 Special Education, First-time Test Takers	85%	89%	91%	75%	76%	Na
Grade 11 ELL, First-time Test Takers	65%	74%	75%	59%	63%	Na
All Test Takers by Ethnic Group:						
Asian	96%	98%	99%	95%	95%	Na
Black	93%	94%	96%	88%	87%	Na
Hispanic	79%	89%	89%	82%	84%	Na
Native American	100%	90%	90%	95%	92%	Na
White	98%	99%	99%	97%	97%	Na
Multi Ethnic	93%	95%	96%	97%	96%	Na

* Gain Score is calculated as [Percent Passing for 2009 – Percent Passing for 2005] and is reported as percentage point increase.

Figure 2

Percent Grade 11 First-time Test Takers Passing GHSMT Mathematics, Spring Administration 2005 - 2009

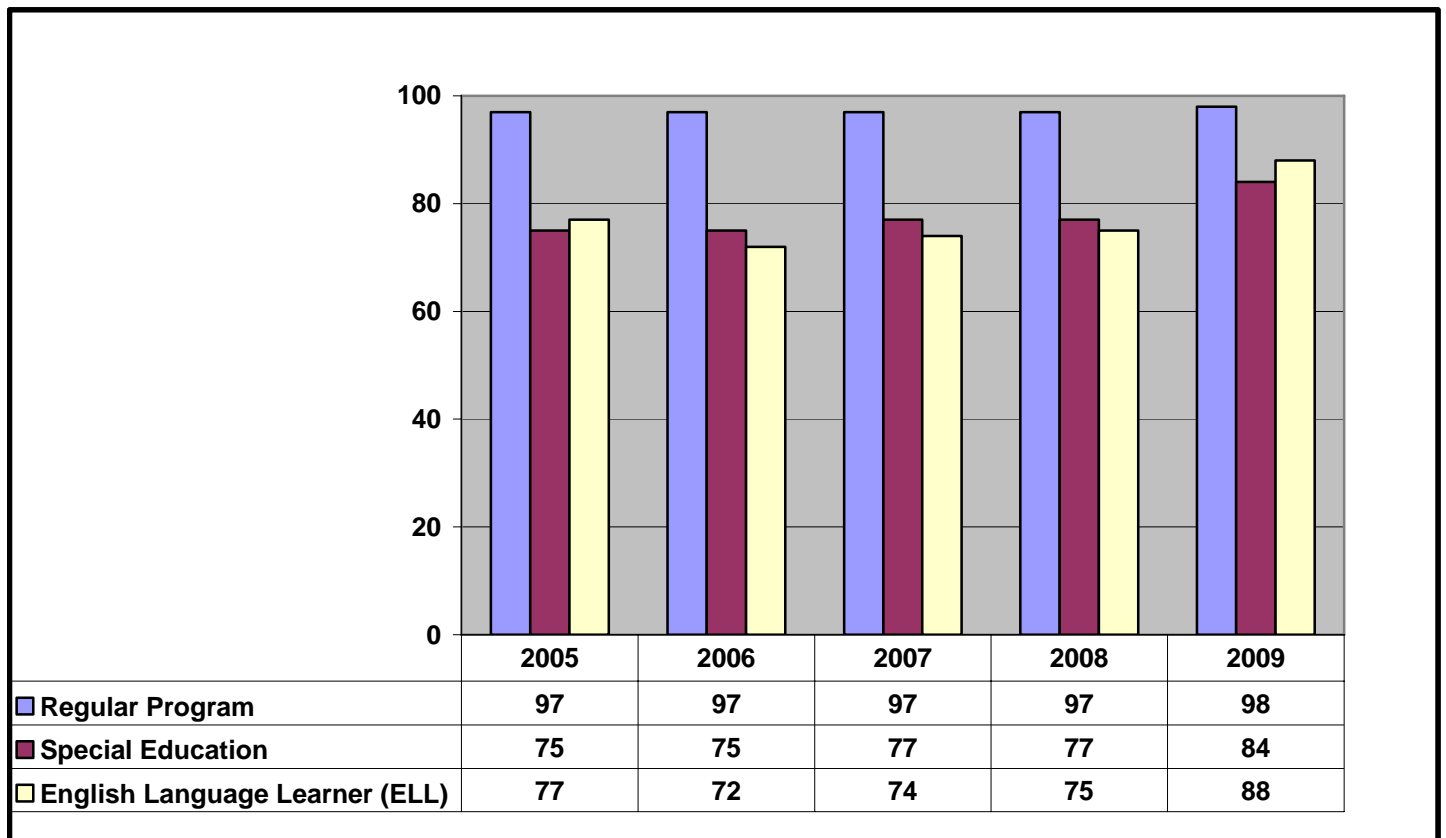


Table 2

GHSMT Mathematics, Percent Passing and Five Year Gain Scores by Group, 2005 - 2009

Student Category	Test Year					Gain Scores*
	2005	2006	2007	2008	2009	
Grade 11 Regular Program, First-time Test Takers	97%	97%	97%	97%	98%	+1
Grade 11 Special Education, First-time Test Takers	75%	75%	77%	77%	84%	+9
Grade 11 ELL, First-time Test Takers	77%	72%	74%	75%	88%	+11
All Test Takers by Ethnic Group:						
Asian	98%	98%	98%	98%	98%	0
Black	86%	85%	86%	87%	90%	+4
Hispanic	84%	85%	85%	86%	91%	+7
Native American	91%	86%	80%	85%	86%	-5
White	97%	97%	97%	97%	99%	+2
Multi Ethnic	92%	91%	92%	98%	98%	+6

* Gain Score is calculated as [Percent Passing for 2009 – Percent Passing for 2005] and is reported as percentage point increase.

Figure 3

Percent Grade 11 First-time Test Takers Passing GHSGT Social Studies, Spring Administration 2005- 2009

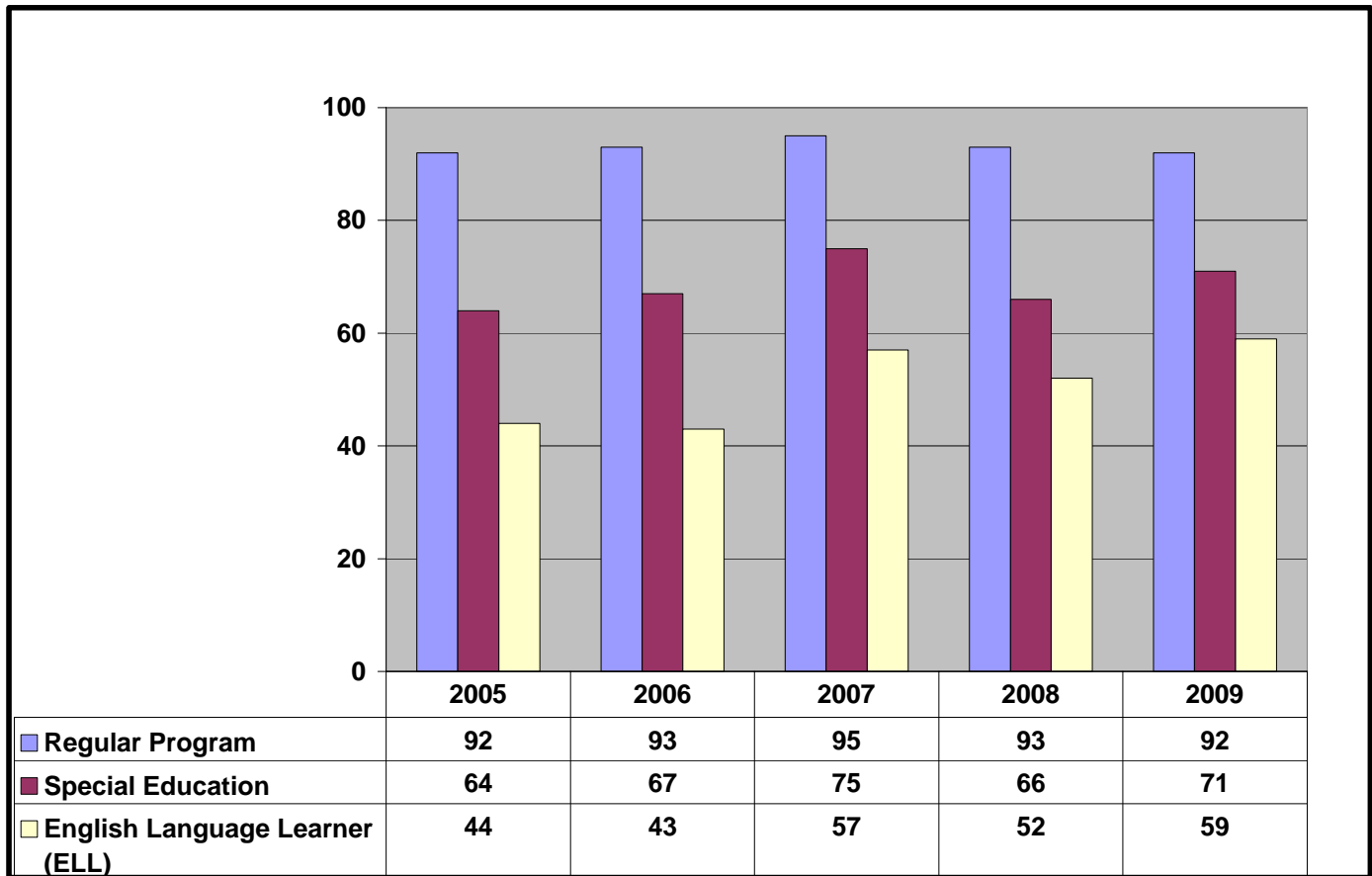


Table 3

GHSGT Social Studies, Percent Passing and Five Year Gain Scores by Group, 2005 - 2009

Student Category	Test Year					Gain Scores*
	2005	2006	2007	2008	2009	
Grade 11 Regular Program, First-time Test Takers	92%	93%	95%	93%	92%	0
Grade 11 Special Education, First-time Test Takers	64%	67%	75%	66%	71%	+7
Grade 11 ELL, First-time Test Takers	44%	43%	57%	52%	59%	+15
All Test Takers by Ethnic Group:						
Asian	89%	91%	95%	93%	95%	+6
Black	70%	73%	79%	77%	79%	+9
Hispanic	63%	69%	71%	70%	74%	+11
Native American	83%	86%	67%	86%	93%	+10
White	94%	94%	96%	95%	96%	+2
Multi Ethnic	78%	82%	90%	88%	88%	+10

* Gain Score is calculated as [Percent Passing for 2009 – Percent Passing for 2005] and is reported as percentage point increase.

Figure 4

Percent Grade 11 First-time Test Takers Passing GHSGT Science, Spring Administration 2005 - 2009

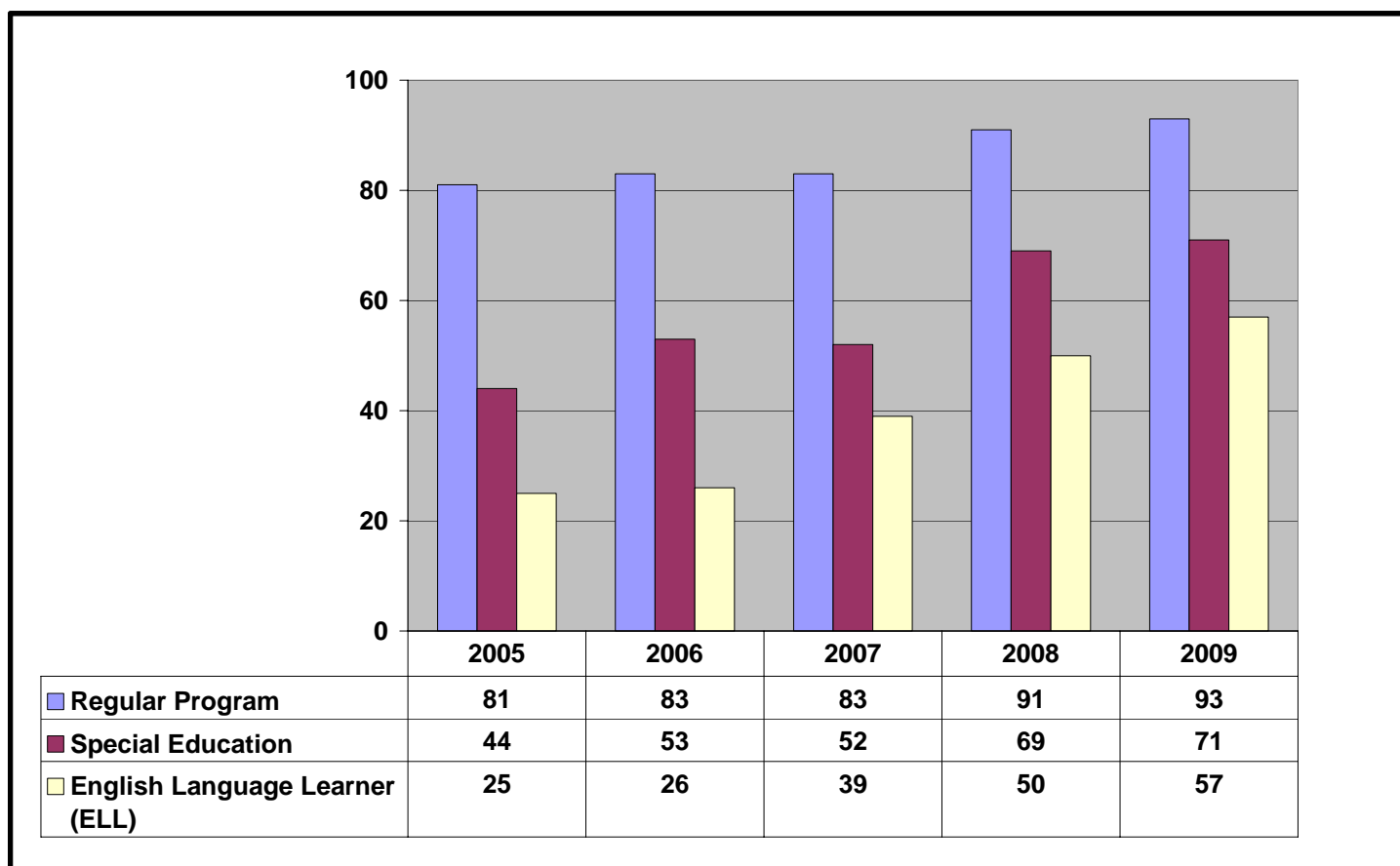


Table 4

GHSGT Science, Percent Passing and Five Year Gain Scores by Group, 2005 - 2009

Student Category	Test Year					Gain Scores*
	2005	2006	2007	2008	2009	
Grade 11 Regular Program, First-time Test Takers	81%	83%	83%	91%	93%	+12
Grade 11 Special Education, First-time Test Takers	44%	53%	52%	69%	71%	+27
Grade 11 ELL, First-time Test Takers	25%	26%	39%	50%	57%	+32
All Test Takers by Ethnic Group:						
Asian	77%	77%	86%	94%	95%	+18
Black	48%	49%	54%	79%	79%	+31
Hispanic	40%	47%	51%	75%	75%	+35
Native American	83%	76%	55%	84%	85%	+2
White	84%	87%	87%	96%	96%	+12
Multi Ethnic	62%	68%	73%	91%	91%	+29

* Gain Score is calculated as [Percent Passing for 2009 – Percent Passing for 2005] and is reported as percentage point increase.