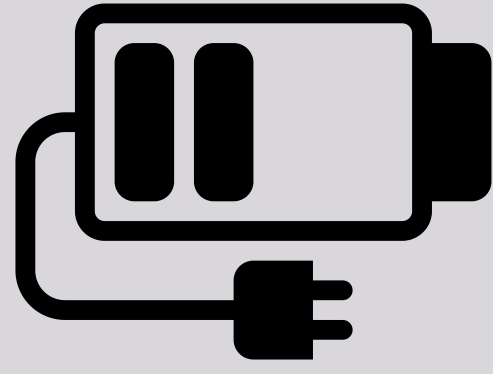




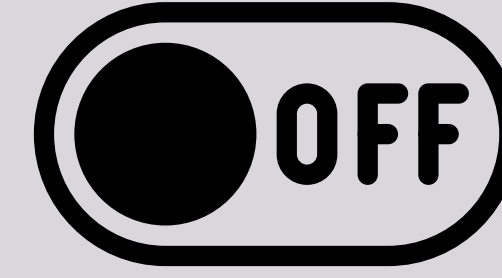
Awtrey Device Rules and Procedures



Make sure the device is charged each night



Bring the device to school daily



Turn off the device when not in use

Students will be responsible for the device they are assigned and take good care of it by:



Keep food and drinks away from the device



Know where the device, bag and charger are at all times



Keep the device, bag or charger in their possession and not allow others to borrow

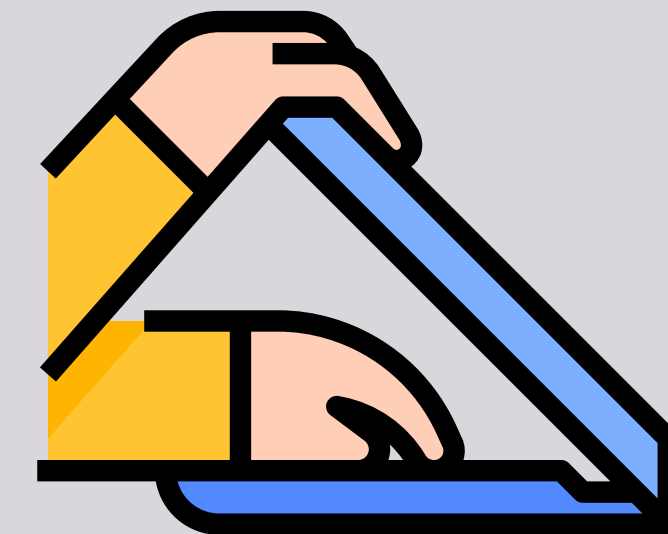
In class, the students will be responsible by:



Having the device out with only teacher permission



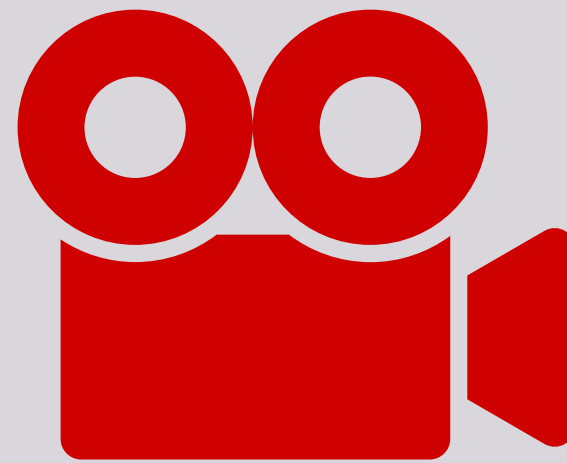
Citing sources on assignments for information, images or music they find online



Lowering the device screen when a staff member is speaking



Turning in assignments on time, even if the device isn't working



Recording video or audio only with teacher or administration permission

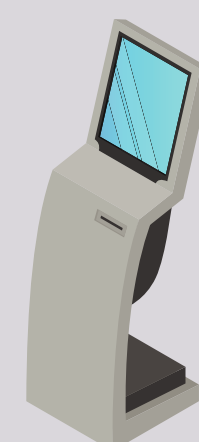


Going to websites that the teacher has directed them to

When a device has a problem, students will:



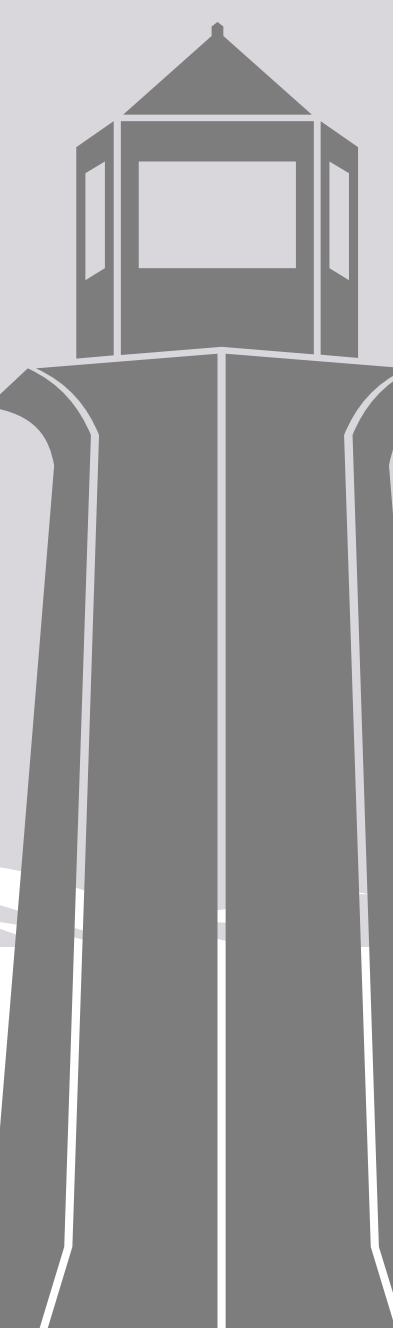
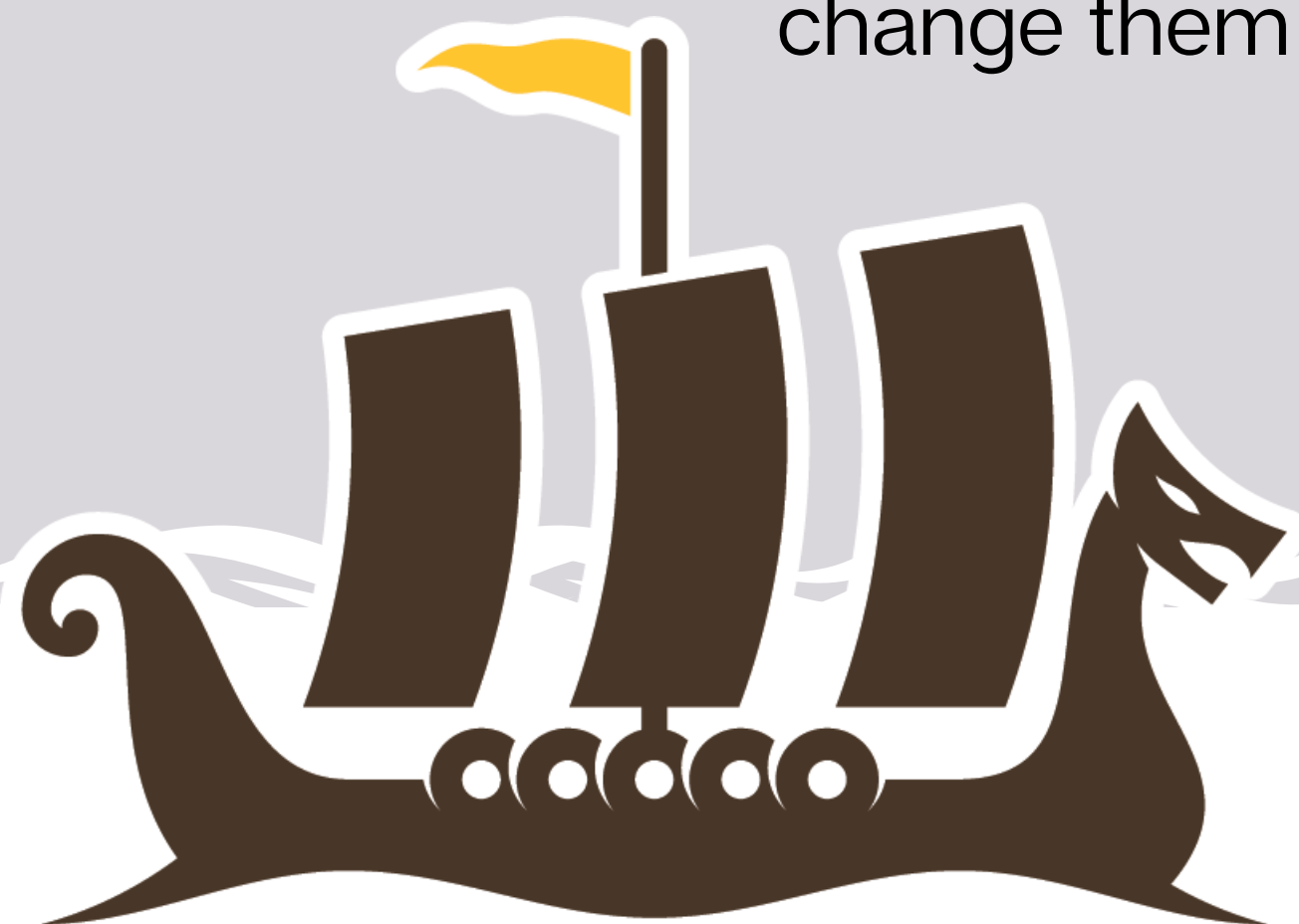
Respect security settings and filters and not change them



Bring the device, charger and bag to the kiosk in the CLC to put in a repair ticket



Only allow district staff to repair or fix the device



Our Mission

One Team, One Goal: Student Success.

Our Vision

Empowering Everyone to be the Best Version of Themselves