



FAMILY HANDBOOK 2023-2024


VISION

The VISION of Teasley Elementary is to educate the whole child in a safe and caring environment.

Mission Statement

Teasley's MISSION is to partner with our school community to develop and empower self-directed, innovative, and inquiring individuals who understand their value and ability to positively impact the world.





Welcome to Teasley Elementary School!

Welcome to the New School Year

Leslie Mansfield, Principal

Welcome to Teasley Elementary! I can't wait to begin another year supporting the staff, students, and community of Teasley! Teasley has a long-standing tradition of being THE BEST LITTLE SCHOOL IN GEORGIA. We are not so little, but we will continue to strive to be the absolute BEST we can be!

I am honored and excited to begin my 13th year as principal of Teasley and remain as committed as ever to making this the BEST place for our staff, students, and families. I love our school and our community, and love being a resident of Smyrna. Teasley is truly my home away from home!!

Teasley remains an authorized Primary Years Program School of the International Baccalaureate Organization. We continue to believe that concept-based instruction and learning through inquiry are best for our students and our teachers are committed to providing a learning environment where this is the reality. This year our top priorities will be reviewing our Program of Inquiry and ensuring that we are meeting the academic needs of all students. Student success is at the core of all my decisions, and I will always put the needs of our Teasley Tigers students above all else.

Thank you for being a part of our Teasley community! I look forward to working with each of you for an amazing year!

Sincerely,

Leslie Mansfield, Principal

Teasley Elementary School Believes:

- **EVERYONE** matters
- We work best as a **TEAM**
- Our greatest commitment is **STUDENT GROWTH**
- Students should be engaged in **RELEVANT** and **RIGOROUS** work
- Each team member should be valued as an **INDIVIDUAL**
- Every student learns differently and deserves a variety of instructional methods



Teasley Elementary is an International Baccalaureate (IB) Primary Years Program World School.

IB World Schools share a common philosophy—a commitment to improving the teaching and learning of a diverse and inclusive community of students by delivering challenging, high-quality programs of international education that share a powerful vision. **

For further information about the IB and its programs, please visit www.ibo.org.

****Mission Statement from the IB**

The International Baccalaureate aims to develop inquiring, knowledgeable, and caring young people who help to create a better and more peaceful world through intercultural understanding and respect. To this end, the organization collaborates with schools, governments, and international organizations to develop challenging programs of international education and rigorous assessment. These programs encourage students across the world to become active, compassionate, and lifelong learners who understand that other people, with their differences, can also be right.

On the following pages, you will see the International Baccalaureate Learner Profile Traits. These traits are taught, reviewed, and recognized in our students. We believe at Teasley Elementary that if we help students to develop these traits, they will indeed be able to change the world!!

Learner Profile Traits

The goal of the International Baccalaureate Program is to develop inquiring, knowledgeable and caring young people who help to create a better and more peaceful world through education that builds intercultural understanding and respect.

Teasley students have the ability to achieve this goal by exhibiting **these traits of the Learner Profile:**

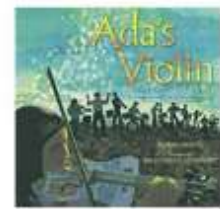
CARING

We **care** about how other people feel. We **help** people when they need us. We make a **positive difference** in the world around us.



THINKER

We take **initiative** to think about problems critically and creatively to make reasonable, **ethical** decisions.



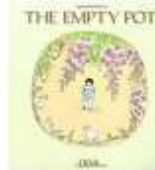
INQUIRER

We have a natural **curiosity** and learn to acquire skills necessary to research **independently**. We actively enjoy and love learning and want to **continue** to do this throughout our lifetime.



PRINCIPLED

We act with **integrity** and a strong sense of **fairness** and respect for the dignity of **ALL** people and groups. We take **responsibility** for our own actions and the resulting consequences.



BALANCED

We understand the importance of physical, emotional, and intellectual **balance** to achieve personal health for ourselves and others.



KNOWLEDGEABLE

We explore concepts, ideas, and issues that have **local and global** significance. This helps us gain **in-depth knowledge** and understanding that can be transferred across **many areas** of our life.



OPEN-MINDED

We understand and appreciate our own culture and history, and are **open** to the perspectives, values and traditions of **others**. We see and think about other points of view, and are **willing to grow** from the experience.



RISK-TAKER

We approach unfamiliar situations with **courage** and **thoughtfulness**. We have the confidence to explore new ideas and actions. We are **brave** when defending our beliefs to others.



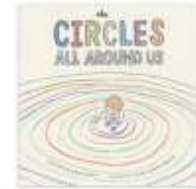
COMMUNICATOR

We understand and express ideas and information **confidently** and **creatively** in more than one language and in a variety of ways. We are willing to work in **collaboration** with others.



REFLECTIVE

We give thoughtful consideration to our learning and experiences. We are able to assess and understand our strengths and weaknesses in order to support our own learning and personal development.



Teasley Elementary

Academic Honesty Philosophy

We believe in the right for all children to be educated in an environment that is fair, honest, trustworthy, transparent, and accountable. We believe that educating students to be principled humans means exhibiting these qualities in our classrooms, school, and community. We respect our children enough to trust and teach them to be responsible for their own learning and to be reflective in their process. This means they show integrity through their work; making sure to be responsible for their own work; or citing the correct sources when necessary.

Academic Honesty Policy:

Important Definitions to know:

- **Plagiarism**: According to IB, this is defined as the “representation, intentionally or unwittingly, of the ideas, words or work of another person without proper, clear and explicit acknowledgment.”
- **Collusion**: When working together, students need to share ideas; not try to take others’ ideas as their own.
- **Collaboration**: Students work together on an assignment to complete it while sharing all ideas, resources, roles, and expectations.
- **Cheating**: Looking at someone else’s work, or answers, to use as your own.

In order to develop **Principled** students that are *knowledgeable* and *reflective* on their learning, we expect the following:

Students:

- Students must be responsible for their own work that is submitted as solely theirs.

If given as individual work:

- Student work must be completed by themselves, not by other students, parents, or even well-meaning teachers.
 - Understanding that guiding and supporting (even other peers) does not mean completing the work for them; that takes away their right to learn and could be considered collusion.

If given as group work:

- Holding each member accountable for doing fair (not always equal) parts of the work.
- Understanding the difference between collaboration and collusion.

- Students will adhere to the **County Student Technology Use Policy** which, among other things, requires them to use appropriate sites, only passwords and accounts that are their own, and to treat technology respectfully.
 - This can be found in multiple languages through the county.
- Students will show integrity by working their hardest and abiding by the Academic Honesty expectations.

Teachers:

- Model Academic Honesty and Integrity.
 - For example, when discussing something he or she learned, making references to the source it came from.
- Teaching grade level appropriate citation.
 - For example, if they are using a digital platform to research; teach them how to quote or paraphrase appropriately.
- Teach the difference between collusion and collaboration.
- Report to parents, administration, and any other appropriate channels when there is a breach in the integrity of the system.
- Make sure to not take away power from students to achieve and process their own learning.

Parents:

- Read, understand, and support the policy.
- Model academic honesty throughout everyday life and conversations.
- Allow students to complete any work that comes home. Do not take away their right to learn. Guide them, do not complete it for them.

When there are violations:

- Teacher will conference with the student.
 - Depending on the student’s grade level, the teacher will address the situation appropriately.
- If it happens again, the teacher will report to the parents. Depending on the severity, the teacher may need to report to the administration.
- If lapses in integrity and honesty continue, there will be action taken using our Communication Form between administration, teachers, and parents.

**A copy of the policy will be given to every student who enrolls at Teasley Elementary School. It will be in the student handbook and signed by both the student and the parent.

Language Philosophy

Language comes in many forms (speaking, visual, mathematic, artistic, technological, etc.). For this reason, it is the responsibility of all the teachers to help children succeed through language development. We also believe in developing a language program that will help our students of all nations to succeed in our modern world and to be global thinkers. We believe that while language acquisition is important, learning about the cultures of different languages is just as integral. Teasley believes in supporting all students whether they are additional language learners or having struggles in their native language. We believe in putting steps in place to help all succeed and to meet them where they are.

Language Policy:

While we have English as our Language of Instruction, students are also learning Spanish through weekly instruction. They are taught in Spanish- using inquiry, visuals, active and engaging lessons, how to speak conversationally, and how to learn more about other Spanish-speaking cultures. Since we have twenty-nine countries represented in our school, we also encourage students with a different native language to teach us about their culture and celebrate it. We offer services for those affected by language delay or acquisition, regardless of their native language.

Examples are:

- ESOL (English as a second language) services where a trained teacher assists with lessons as needed.
 - o All students are assessed for their needs as they enter school.
- Speech and Language Assistance through our Special Ed program.
 - o Specialized teachers develop an IEP for these students and are able to give them personalized instruction to achieve their goals.
- RTI (Response to Intervention) for when a language issue is noticed.
 - o Teachers meet together to discuss the issues a child is having and ways to support him or her.
- Google Translate
 - o When families and/or students are brand new to the country we are able to communicate through this medium to share pertinent information.
- Picture Cards
 - o Students who are non-verbal can show picture cards for ways that they feel or things they need.
 - o Teachers also use these to show students who need that extra support what is coming next in their day or other details they want them to know.
- County can provide translators when needed.
 - o When there is a conference, teachers can arrange for an official translator to come.
- Library has multi- lingual books available for check-out
- Bi-Lingual Adults
 - o This becomes extremely helpful when a student who does not speak our native language is upset and needs to be comforted in their language.
 - o It is also helpful when they can help teachers communicate with parents.

Assessment Philosophy:

We believe that assessment, done the right way, is integral in learning about how to teach a student, understand a student, support a student, and help them to become successful learners. Assessment should be varied, choice-directed, when possible, developmentally appropriate, meaningful, and ongoing. Now, when given through an IB lens, it should also be concept driven and collaboratively reflected upon. Finally, we believe that assessment can be a steppingstone to enabling students to develop agency. We know that the assessment is not always the goal- it is the learning that happens along the way. It is imperative to communicate with the student and their parent about their performance. We also know it is vital to have students reflect on their own performance and learning.

Assessment Policy:

While keeping in mind the philosophy above, this chart below shows the expectations we have for our teachers and students.

We believe in keeping parents informed and here are some of the ways we do that:

- Report Cards 4 times a year
- IB Learner Profile Report Card Addendum
- Progress reports
- Weekly Newsletters
- Teacher CTLS Page
- Conferences in Fall and again as needed
- Orientation
- Emails
- Phone Calls
- Grading Portal
- Electronic Portfolio
- CTLS communication

Assessment	Grades	Timeframe
• Milestones	3- 5	Spring
• Touchstones	All	Every 6 weeks
• Reading Inventory	K -5	3 x a year
• Math Inventory	K- 5	3 x a year
• Next Steps and Guided Reading Assessments	K- 5	3 x a year and as needed
• Interim Assessments	K- 5	4 x a year

Assessment	Grades	Timeframe
<ul style="list-style-type: none"> • Pre and Post Writing Assessments 	K- 5	3 x a year
<ul style="list-style-type: none"> • Formative Assessments • Examples: checklists, role plays, presentations, rubrics, peer conferencing, teacher conferencing, technology presentations, anecdotal records, brain maps, etc. 	K- 5	Daily or as needed
<ul style="list-style-type: none"> • Reflections 	K- 5	As needed (and end of units)
<ul style="list-style-type: none"> • Report Cards 	K- 5	4 x a year
<ul style="list-style-type: none"> • Progress Reports 	K- 5	As needed on individual basis
<ul style="list-style-type: none"> • See- Saw 	K- 5	Varied
<ul style="list-style-type: none"> • GKIDS 	K	Yearly
<ul style="list-style-type: none"> • Iowa Test 	3 rd	Yearly
<ul style="list-style-type: none"> • CogAT 	1 st , 3 rd , 5 th	Yearly
<ul style="list-style-type: none"> • Portfolio 	K- 5	As appropriate
<ul style="list-style-type: none"> • Summative 		As appropriate, usually 6 x a year
<ul style="list-style-type: none"> • Data Team 	K- 5	6 x a year

*** Testing in bold is county or state-mandated**

Inclusion Philosophy:

We believe that the inclusion of all students from our Special Needs Pre-K up to our 5th graders is paramount to the success not only of the IB program but also to the success of raising internationally minded and global thinkers. All students have the right to learn in the least restrictive environment and one of support alongside their peers and educators in the building. We believe that diversity within our school, whether it is through physical, learning, cultural, or behavioral differences is a strength in our school. We believe in creating a culture of success for ALL students.

Inclusion Policy:

While all children have specialized needs that should be met; we have a population at Teasley with specific diagnoses such as:

- Students with Autism from Pre-K- 5th
- Speech and Language Impairments
- Learning Disabilities
- Health Impairments
- Attention Deficit Disorders
- Other Health Impairments
- Behavioral Disorders
- Emotional Impairments
- Gifted Learners
- Second Language Learners
- Advanced Learners
- Physical Impairments

Support for these (and all) Learners:

- All students are supported through differentiation. There are gifted strategies and behavioral strategies used daily in all classrooms.
 - Many teachers have their gifted endorsement and are using these strategies daily.
 - We have access to behavioral specialists and counselors who assist teachers with how to support students with behavioral difficulties in the classroom.
- Through the PYP program students are able to use more choice which allows them to have their own agency over their learning and they can use it to excel with their own creative strength.
- Once a student is identified with a diagnosis, students receive additional support that comes in many different forms such as a co-taught classroom with a certified Special Education teacher, a Gifted teacher, or in a small group environment.

Responsibility of Teachers:

- When there are high-level needs and differentiation is not enough, teachers will begin the RTI process directed by the state of Georgia.
 - Teachers collaborate about what the issue is and how they can support that child academically, behaviorally, emotionally, or any other avenue.
- Gifted Certified teachers collaborate with general ed teachers to identify how to recognize and utilize these strengths from the children in their classroom.
- Special Education Certified teachers collaborate with general ed teachers to identify how to recognize these traits and how to assist those students achieve success.
- All teachers will work together to understand how to meet the child where he or she is and how to help them achieve their own success.
- Teachers understand that students come from many diverse types of backgrounds. Quite often this can play a role in how they respond to your classroom and expectations. Teachers will learn how to support those children to be successful.
- Teachers look for opportunities to allow struggling children, or students with different experiences, to share theirs to make them feel valued and supported.

COMMUNICATION

Parent/Teacher Conferences are held during October. Teachers and parents meet to discuss student progress, the instructional program, and any other issues. **During this week students are dismissed 2 hours early.** Please make arrangements for childcare on these days. ASP will operate on these days and opens early. Students may not remain unsupervised at school during this time.

When appropriate, students may also be included in conferences. Please make arrangements for care of younger siblings, as they may disrupt conference times.

Other conferences may be scheduled throughout the school year as needed. If you wish to meet your child's teacher, please contact them to schedule a pre-arranged time.

The Cobb County School District Website hosts a wealth of information, as does the **Teasley Elementary School Website.** www.cobbk12.org and www.cobbk12.org/Teasley.

COBB edTV is an educational access cable channel featuring local programming and Board of Education meetings. COBB edTV is available on Comcast Channel 24 in Smyrna, or Charter cable channel 97.

CTLs Parent is an online system allowing you to customize how you receive notifications from CCSD and Teasley. Notifications can be received by phone, text message, or e-mail, and will be used to provide information regarding upcoming events, important information impacting families, and emergency information.

Each month Teasley's PTA distributes the **Teasley PTA Newsletter.** This newsletter will provide valuable information regarding happenings at Teasley, and ways you can be an active participant at Teasley.

Cobb County School District

770-426-3300

Teasley Office

Phone: 770-437-5945

Fax: 770-437-5947

Principal

Leslie Mansfield

Email: Leslie.Mansfield@cobbk12.org

Assistant Principals:

Tyler Bailey

Email: Tyler.Bailey@cobbk12.org

Christa Parrish

Email: Christa.Parrish@cobbk12.org

Support & Services Admin:

Kristin Willis

Email: Kristin.Willis@cobbk12.org

CCSD Transportation

Phone: 678-594-8000



Follow us on Twitter

@TeasleyElementary

Instagram

TeasleyElementary

Facebook

facebook.com/TeasleyElementary

TEAM EXPECTATIONS

FOR PARENTS

- Adhere to the code of conduct in the student handbook for appropriate attire and conduct
- Assume responsibility for participation in school meetings, events, conferences, and other school sponsored activities
- Contact school staff to schedule conferences when needed
- ALL Transportation changes must be made through GoSAFE.
- ALL Teasley families must go into GoSAFE and set dismissal defaults for their student(s)
- Promote daily attendance and punctuality
- Promote school-wide reading incentive program at home and read with your child daily
- Review/sign/return daily reports, academic alerts and report cards
- Send children to school prepared to learn physically, emotionally, and academically
- Refer to Teasley's website, teacher's digital classrooms, and CTLS Parent to stay informed

FOR STUDENTS

- Demonstrate appropriate behavior and model the IB character traits
- Adhere to standard school attire, discipline policies and the code of conduct
- Come to class prepared with all necessary materials
- Read 20 minutes every afternoon/evening
- Be dedicated to being a lifelong learner
- Follow school/classroom rules
- Practice safety on buses and school grounds
- Demonstrate respect for self, peers, teachers, and other adults
- Respect school property and the property of others
- Speak courteously to everyone and demonstrate good manners
- Stay on task and put forth their best effort
- Exhibit school pride

FOR TEACHERS

- Adhere to the Georgia Code of Ethics
- Communicate and support the vision & mission of Teasley
- Communicate with parents regularly
- Foster professional growth and seek information on current trends and research, maintaining and developing professional excellence
- Guide students to identify and reach their highest potential
- Provide a safe and caring learning environment, promoting feelings of trust and team building
- Implement instructional activities that are relevant and rigorous
- Provide communication and resources through the digital classroom and CTLS Parent
- Utilize strategies that promote thinking and lifelong learning
- Support school strategic plan goals, and school and community functions

2023-2024 School Year Calendar

July 2023

Su	M	Tu	W	Th	F	Sa
						1
2	3	4	5	6	7	8
9	10	11	12	13	14	15
16	17	18	19	20	21	22
23	24	25	26	27	28	29
30	31					

July 4 - Independence Day

August 2023

Su	M	Tu	W	Th	F	Sa
		1	2	3	4	5
6	7	8	9	10	11	12
13	14	15	16	17	18	19
20	21	22	23	24	25	26
27	28	29	30	31		

September 2023

Su	M	Tu	W	Th	F	Sa
					1	2
3	4	5	6	7	8	9
10	11	12	13	14	15	16
17	18	19	20	21	22	23
24	25	26	27	28	29	30

Sept. 4 - Labor Day

October 2023

Su	M	Tu	W	Th	F	Sa
1	2	3	4	5	6	7
8	9	10	11	12	13	14
15	16	17	18	19	20	21
22	23	24	25	26	27	28
29	30	31				

November 2023

Su	M	Tu	W	Th	F	Sa
			1	2	3	4
5	6	7	8	9	10	11
12	13	14	15	16	17	18
19	20	21	22	23	24	25
26	27	28	29	30		

Nov. 7 - Election Day

Nov. 23 - Thanksgiving Day

December 2023

Su	M	Tu	W	Th	F	Sa
					1	2
3	4	5	6	7	8	9
10	11	12	13	14	15	16
17	18	19	20	21	22	23
24	25	26	27	28	29	30
31						

Dec. 25 - Christmas Day

January 2024

Su	M	Tu	W	Th	F	Sa
	1	2	3	4	5	6
7	8	9	10	11	12	13
14	15	16	17	18	19	20
21	22	23	24	25	26	27
28	29	30	31			

Jan. 1 - New Year's Day

Jan. 15 - MLK Day

February 2024

Su	M	Tu	W	Th	F	Sa
				1	2	3
4	5	6	7	8	9	10
11	12	13	14	15	16	17
18	19	20	21	22	23	24
25	26	27	28	29		

Feb. 19 - Presidents' Day

March 2024

Su	M	Tu	W	Th	F	Sa
					1	2
3	4	5	6	7	8	9
10	11	12	13	14	15	16
17	18	19	20	21	22	23
24	25	26	27	28	29	30
31						

April 2024

Su	M	Tu	W	Th	F	Sa
	1	2	3	4	5	6
7	8	9	10	11	12	13
14	15	16	17	18	19	20
21	22	23	24	25	26	27
28	29	30				

Apr. 1-5 - Spring Holidays

May 2024

Su	M	Tu	W	Th	F	Sa
			1	2	3	4
5	6	7	8	9	10	11
12	13	14	15	16	17	18
19	20	21	22	23	24	25
26	27	28	29	30	31	

May 27 - Memorial Day

June 2024

Su	M	Tu	W	Th	F	Sa
						1
2	3	4	5	6	7	8
9	10	11	12	13	14	15
16	17	18	19	20	21	22
23	24	25	26	27	28	29
30						

CALENDAR LEGEND

- First and Last Days of School
- Holiday - School Closed
- Student Holiday/Staff Day
- Asynchronous Learning Day

- Elementary/Middle School Conference Week
Tuesday, October 17 - Friday, October 20
(Early release for elementary and middle schools only)
- Early Release Days - All Levels
End of each semester - December 18 & 19 and May 20, 21 & 22

7/1/2021

Revised: 6/1/2023

Teasley Elementary School
2023-2024 Year at a Glance

July	January
Kinderarten Parade (3:00-4:30 a.m. Taylor Brewer Park)	4 Return to School - Welcome Back!
22 Staff Luncheon (11:30 a.m.)	10 Kona Ice (4:30-6:00 a.m.)
25 Kickoff Orientation	12 Dress Down Day \$!
August	12 Prosepective Parent Coffee/Tour (8:15 AM)
1 First Day of School	15 No School - MLK Day
1 Tears & Cheers (7:50 a.m. Media Center)	18 PTA/PAWS Meeting (8:15 AM)*
9 Kona Ice (4:30-6:00 a.m.)	23 Spirit Night
21 Asynchronous Learning Day	25 IB Trait Ceremony - Open Minded
24 PTA/PAWS Meeting (8:15 AM)*	26 All Pro Dads
25 Prosepective Parent Tour (8:15 AM)	February
25 National Banana Split Day	1 Black History Month Kickoff
31 IB Trait Ceremony - Carine	1 Literacy Night
September	5-9 Counselor Appreciation
4 No School - Labor Day	7 Prosepective Parent Tour (8:15 AM)
8 Back to Football Friday	7 Kona Ice (4:30-6:00 a.m.)
12 Spirit Night	8 PTA/PAWS Meeting (8:15 AM)*
13 Kona Ice (4:30-6:00 a.m.)	9 Law Enforcement Appreciation Day
14 PTA/PAWS Meeting (8:15 AM)*	9 Hero and Heroess Dance
15 Prosepective Parent Tour (8:15 AM)	15 IB Trait Ceremony - Risk-Taker
19 Picture Day (Standard Attire)	16 Dress Down Day \$!
21 IB Trait Ceremony - Thinker	19-23 No School - Winter Break
22 Dress Down Day \$!	March
25-29 No School - Fall Break	1 Read Across America
29 PAWS 60 to 60 Campaign Kickoff	1 Book Character Dress Up Day
October	4 Asynchronous Learning Day
2 Custodian Appreciation Day	8 Prosepective Parent Coffee/Tour (8:15 AM)
9 Reflections Art Contest Entries Due	12 Spring Pictures (Dress Up)
11 Kona Ice (4:30-6:00 a.m.)	13 Davinci's Pi Day
12 PTA/PAWS Meeting (8:15 AM)*	14 PTA/PAWS Meeting (8:15 AM)*
13 All Pro Dads	15 All Pro Dads
13 International Night	17 PAWS Too Golf Event
16 Asynchronous Learning Day	20 Kona Ice (4:30-6:00 a.m.)
17 PTA Sponsored Staff Lunch	21 IB Trait Ceremony - Knowledgeable
National School Bus Safety Week & Driver Appreciation	21 Specials Night & K&L at Performance (6-8 PM)
17-20 Conference Week (12:30 Dismissal)	25-29 Neuro Diversity Week
20 Dress Down Day \$!	27 Prosepective Parent Tour (8:15 AM)
20 Career Day	29 Dress Down Day \$!
25 Prosepective Parent Tour (8:15 AM)	April
26 IB Trait Ceremony - Inquirer	1-5 No School - Spring Break
26 Tizer Trot Kickoff	4 School Librarian Appreciation Day
27 Trunk or Treat (6:15 a.m.)	7 National Assistant Principal Appreciation
31 Costume Day	9 Spirit Night
November	10 Kona Ice (4:30-6:00 a.m.)
2 Math Night	11 PTA/PAWS Meeting (8:15 AM)*
3 Dress Down Day \$!	12 Prosepective Parent Tour (8:15 AM)
6 Spirit Night	15-16 Rock East 5th Grade Field Trip
7 Election Day (No School)	18 IB Trait Ceremony - Communicator
8 Kona Ice (4:30-6:00 a.m.)	19 Mother Son Night of Fun (6-8 PM)
9 Veterans Day Breakfast (8:15 a.m. Media Center)	24 Front Office Appreciation
10 Tizer Trot	May
13 World Kindness Day	1 School Principals Day
13 Love Offering	3 Lunch Hero Day
14 Thankastive Feasts (1st, 4th, SNPO)	6-10 Teacher Appreciation Week
15 Thankastive Feasts (K, 5th, Multi-Age Classes)	8 Nurse Appreciation Day
16 Thankastive Feasts (2nd, 3rd)	8 Prosepective Parent Tour (8:15 AM)
16 PTA/PAWS Meeting (8:15 AM)*	8 Kona Ice (4:30-6:00 a.m.)
16 IB Trait Ceremony - Principled	9 PTA General Meeting (6:45 a.m.)
17 Dress Down Day \$!	9 2nd & 3rd Spring Performance (7 a.m.)
17 Prosepective Parent Coffee/Tour (8:15 AM)	14 All Pro Dads (EOY Celebration)
20-24 Thankastive Break	Testing
28 End PAWS 60 for 60 Campaign	Field Day (K-1st)
30 PTA General Meeting (6:45 a.m.)	Field Day (2nd-3rd)
30 4th & 5th Grade Holiday Performance (7 a.m.)	Field Day (4th-5th)
December	Class Award Ceremonies (K & 1 2 & 3 4)
6 Prosepective Parent Tour (8:15 AM)	16 IB Trait Ceremony - Reflective
7 IB Trait Ceremony - Balanced	16 5th Grade Promotion Ceremony
8 All Pro Dads	17 5th Grade YES Day
13 Kona Ice (4:30-6:00 a.m.)	17 Senior Walk
13-15 Giving Market (Media Center)	20-22 Early Release (12:30 Dismissal)
15 PJ Dress Down Day \$!	22 Last Day of School
15 Pancake Breakfast	
18 Early Release (12:30 Dismissal)	
19 Early Release (12:30 Dismissal)	
20 Winter Holidays Begin	

JOIN US AT REV COFFEE ON THE 3rd SATURDAY OF EACH MONTH
(3-8 p.m.) FOR TEASLEY SPIRIT SATURDAYS!

*PTA/PAWS Meetings at 8:15 a.m. will be via ZOOM



Standard School Attire Requirements for 2023-2024

All students of Cobb County School District shall be required to maintain the level of personal hygiene necessary to ensure a healthy school environment and all students must maintain an acceptable standard of dress. The standard of dress for Teasley students shall be as follows:

Teasley Expectations
Shirts: <ul style="list-style-type: none"> Shirts must have a collar and be long or short sleeved. Shirts must be a SOLID color (navy, blue, light blue, black, gray, yellow, red, purple, light pink, green, or white ONLY). Other colors not listed are not acceptable. There may be no patterns, markings, labels, or other designs on the shirt except an emblem that is no larger than 2"x3" in the upper left pocket area or sleeve.
Pants: <ul style="list-style-type: none"> Pants must be NAVY, BLACK, or KHAKI only. Pants must be solid with no patterns, labels, or other markings. Additionally, there may be no holes or tears in pants. Jeans, denim material, or workout type fabrics are <u>not</u> permitted. No leggings, jeggings or other skintight fabric are permitted as pants.
Shorts: <ul style="list-style-type: none"> Shorts must be NAVY, BLACK, or KHAKI only. Shorts must be solid with no patterns, labels, or markings. Additionally, there may be no holes or tears in shorts. No jean, denim, gym, or workout type fabric is permitted. Shorts must not be shorter than 4" above the knee. No cut-offs are allowed. All shorts must have a hem.
Skirts/Dresses/Jumpers: <ul style="list-style-type: none"> Skirts must be NAVY, BLACK, or KHAKI only. <i>Privacy shorts should be worn underneath skirts and dresses.</i> Dresses must have a collar and may be navy, light blue, light pink, red, purple, green, or khaki. Solid NAVY, BLACK, or KHAKI jumpers may be worn with a standard school attire collared shirt underneath. Skirts, dresses, and jumpers must be solid with no patterns, labels, or other markings. No jean, denim, or skintight material is permitted. Skirts, dresses, and jumpers must not be shorter than 4" above the knee.
Sweaters/ Sweatshirts: <ul style="list-style-type: none"> Sweaters/Sweatshirts: NO HOODED sweaters or sweatshirts are permitted to be worn inside during the school day with the exception of a Teasley hooded sweatshirt. All sweaters and sweatshirts must be a SOLID navy, light blue, black, gray, purple, or white. There may be no patterns, markings, labels, or other designs. Hoodies may be worn as jacket or outerwear only and must be removed once in the building. Please be sure your child has something meeting Standard School Attire guidelines to wear inside the building when cold.
Shoes: <ul style="list-style-type: none"> Shoes and sneakers of any variety are allowed if they are closed toe with the heel covered. Boots are also permitted. No open toe shoes or sandals, nor any heels over 1" are allowed. For safety reasons, students MUST wear sneakers or tennis shoes on the days their class is scheduled for PE!
Socks/Leggings/Stockings/Tights: <ul style="list-style-type: none"> Socks, leggings and stockings/tights: All visible socks, tights, stockings/tights, or other foot covering must be blue, black, brown, gray, or white SOLID colored. Leggings may be worn under dresses. NO OTHER COLOR IS ALLOWED. Additionally, socks, leggings, and stockings/tights MAY NOT BE PATTERNED which would include lace, fishnets, argyle, checks, polka dots, stripes, or any other markings.
Spirit Wear Day Expectations: <ul style="list-style-type: none"> Fridays, students may wear a Teasley spirit shirt or class grade-level shirt. Students must still wear standard pants, skirt, or shorts with their spirit shirt.
<p align="center">*****No hoodies or jackets that are not standard attire may be worn inside the school building, so please be sure your student has an appropriate sweater or jacket. Thank you!!*****</p>

Optional Teasley logoed uniforms can be purchased at <http://www.landsend.com/shop/school-uniforms>

Shopping at [Landsend.com](http://www.landsend.com)? Enter Teasley's Preferred School #900150764 at checkout.

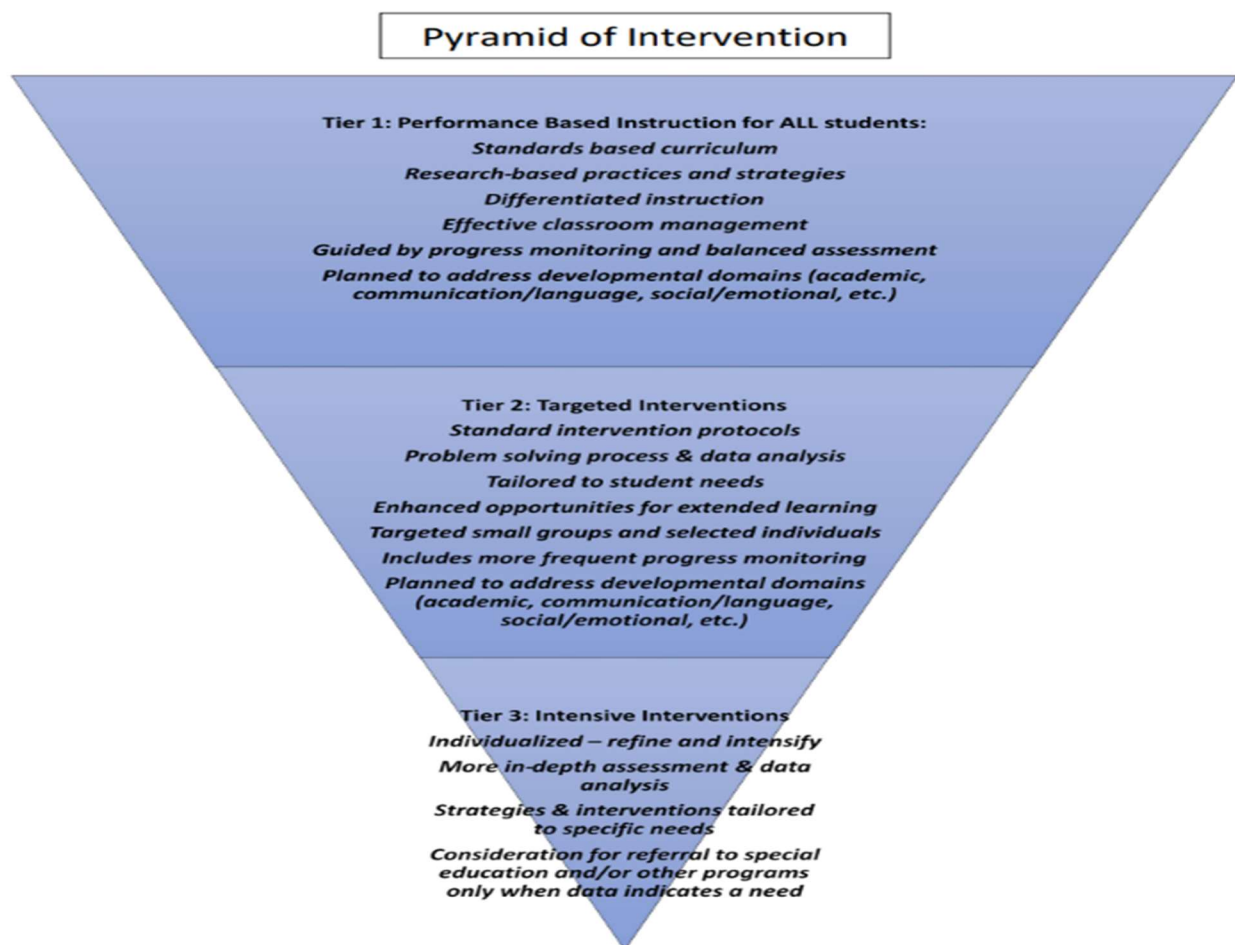


*If your child is cold natured, please provide them a standard attire sweater to wear inside the building.

RESPONSE TO INTERVENTION (RTI)

In an effort to accommodate the learning needs of students who experience school difficulties, Cobb County School District has implemented Response to Intervention (RTI), a flexible problem-solving model in which assistance is provided to match learners' needs.

Students with emerging difficulties in school are first given *Tier 1*, universal support. If that help is not sufficient, they will move up tiers and receive more targeted/intensive interventions.



SCHOOL LUNCH PROGRAM & FOOD IN SCHOOL

A LEADER IN SCHOOL NUTRITION

The vision of CCSD's Food and Nutrition Services is to be recognized as a leader in school nutrition by pioneering innovative methods of linking nutrition to lifelong learning. The mission is to nurture and nourish students in partnership with families, CCSD staff, and the community by providing nutrition education, exceptional customer service, and appealing foods of good value, while exceeding federal standards for School Nutrition Programs.

BREAKFAST		LUNCH	
Student All Levels – Full Pay	\$2.50	Student All Levels – Full Pay	\$3.50
CCSD Staff	\$2.75	CCSD Staff	\$4.75
Guests	\$2.75	Guests	\$5.00

FREE & REDUCED-PRICE MEALS

Applications are accepted throughout the school year and are available online by visiting the CCSD Food and Nutrition Services Department webpage. All applications are confidential, and notification of status will be sent home with the student. Applications must be completed annually, and only one application per family is necessary.

All children in households receiving benefits from SNAP or TANF are eligible to receive free meals regardless of family income. Children may also receive free or reduced-price meals if the family income is within the free limits on the Federal Income Eligibility Guidelines.

A typical school lunch provides at least 1/3 of a student's daily nutritional requirements and includes several entrée choices each day, a variety of milk choices, whole grains, and plenty of fruits and vegetables.

PROCEDURES

As we begin the 23-24 SY, students will continue to enjoy the long-standing tradition of eating lunch in our school cafeteria. Due to the large number of students that attend Teasley, combined with the very limited space in our cafeteria, **we will NOT be permitting lunch visitors at this time.** We understand that many of you are looking forward to sharing in the experience and the cuisine with your student. We pledge to update our Teasley families as soon as we can increase the number of patrons in our cafeteria, and in turn lift this restriction.

Students arriving by car must arrive at school **BEFORE 7:35** in order to receive breakfast and will be given breakfast to eat in the classroom. If a bus is late, students will still be provided the opportunity to eat breakfast.

Due to guidelines set forth by the School Nutrition Program, **PARENTS MAY NOT BRING FAST-FOOD LUNCHES FOR STUDENTS.**

Students are encouraged to bring a **NUTRITIOUS SNACK** to school each day. **Treats brought into school for student birthdays should be pre-arranged with their classroom teacher.**

REMINDER—NO FAST-FOOD LUNCHES SHOULD BE BROUGHT INTO SCHOOL. THANK YOU!!

AFTER SCHOOL PROGRAM

After School Program (ASP) is a school-age care program, serving students in Kindergarten through Grade 5, designed to meet the needs of working families by providing high-quality care after school from 2:45 p.m. - 6:00 p.m.

A variety of activities in a youth-friendly atmosphere is the hallmark of this daily program. Time will be provided for study, as well as physical, instructional, and social activities. At this time, Enrichment activities will NOT be offered through the After-School Program. Cobb County's After School Program is excited to announce a partnership with Eleyo. Eleyo is an easy-to-use, mobile-friendly technology for online registration, account management, and payments.

RATES & REGISTRATION

\$20 one-time registration fee must be paid before a student may attend ASP

\$10.00 Daily Rate

\$1.00 per minute late fee will be charged after the program closes at 6:00 p.m.

YOUR CHILD MAY NOT PARTICIPATE IN ASP WITHOUT A NEW REGISTRATION ON FILE FOR THE 23-24 SCHOOL YEAR.

ATTENDANCE

ASP attendance is marked at the beginning of ASP (2:45 pm). Any student picked up after 2:45 pm will be charged \$10.00 to their account.

PICK UP PROCEDURES

Identification is required to be presented at the time of pick-up. Only authorized adults listed for pick-up will be allowed to pick-up students. We are not allowed to receive authorization requests via phone or email. You must add all emergency contacts to your online account via Eleyo.

WE CLOSE AT 6:00 PM

ASP ends at 6:00pm. You will accrue a charge of \$1.00 per minute for every minute that your child is not picked up (according to the school's clock). Three late pick-ups will result in termination from the program.

EXPECTATIONS

Students are expected to follow the same rules and expectations that are used during the school day. Discipline issues will be addressed promptly. Negative balances, late pickups, and discipline issues may result in dismissal from the program.

HOW IT WORKS

ASP only operates on school days and does not operate on teacher workdays, school cancellations due to inclement weather, holidays, or other county or school emergencies.

MAKING PAYMENTS

Online and automatic draft payments can be made online via Eleyo. Cash, check, or money order payments may be submitted using the gold payment envelopes provided by the school. The envelopes will be dropped in the safe, in the front lobby, or the black boxes located in various places around the school. Be sure to inform your child that the black box in the café is for cafeteria payments only. **Payments are due upon receipt of statements.**

BUS TRANSPORTATION

Questions regarding bus routes, bus drivers, and pick up and drop off times should be directed to Cobb County School District's Transportation Department. Please call 678-594-8000. To view the most relevant bus route information for your address visit <http://transportation.cobbk12.org/livewqweb/webquery/>

PICK-UP

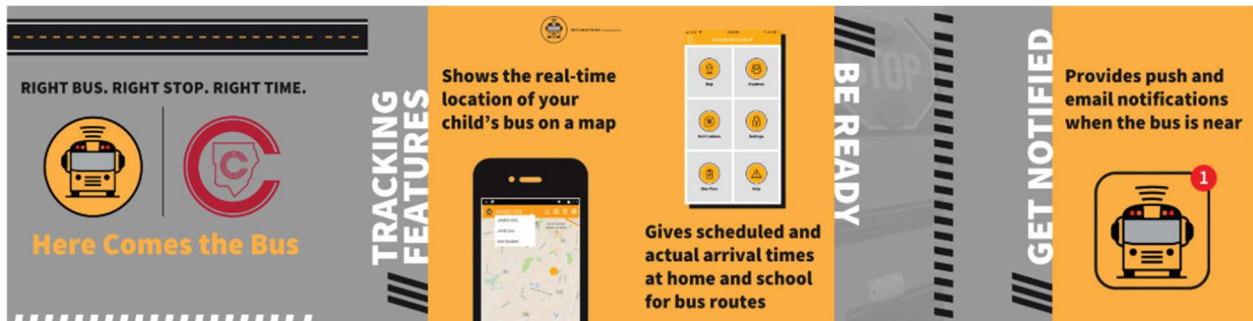
Students should arrive at the bus stop no later than 5 minutes prior to the pickup time and are to wait in an orderly manner. Parents can monitor the location of their child's school bus, in real-time, by downloading the HERE COMES THE BUS app. Parents should provide supervision at the bus stop. Buses are not considered late until 5 minutes after the scheduled pick up time has elapsed. Please keep up to date on possible bus route changes (especially at the beginning of the school year) by visiting <http://transportation.cobbk12.org/livewqweb/webquery/>

DROP-OFF

Students 8 years old and younger may be brought back to their school in the afternoon if a parent, guardian, or their designee is not present at the bus stop to receive them or if they otherwise appear to have no appropriate supervision. This is in accordance with the Department of Family and Children Services Guidelines for safety and supervision of children. Families are responsible for ensuring arrangements have been made for students once they are off the bus. If students are returned, the school will make every effort to contact a parent/guardian. If no contact can be made, the student will be placed in ASP, resulting in a \$7.00 charge, and an additional \$10.00 charge if the student has not been registered.

CONDUCT

Use of CCSD transportation is a privilege for families living more than half a mile from school. A student may be suspended from CCSD transportation as a result of inappropriate or dangerous behavior. Students must always demonstrate proper respect to the driver and obey all driver instructions. Objectionable or dangerous objects are not permitted on the bus (including, but not limited to tobacco, drugs, alcohol, weapon imitations and weapons). Students will keep their arms, heads, and belongings in the bus at all times. The use of obscene gestures and language is prohibited. Willful destruction or defacing of school property is prohibited. Fighting or physical play is not allowed on the bus or school grounds.



Here Comes the Bus

A School Bus Tracking App for Parents

Tracking Features

- Shows the real-time location of your child's bus on a map
- Gives scheduled and actual arrival times at home and school for bus routes
- Provides push and email notifications when the bus is near

Sign Up Instructions for Parents:

1. Download Here Comes the Bus app or visit herecomesthebus.com
2. Click the "Sign Up" button
3. Enter school code 87881 and click "Next" followed by "Confirm"
4. Complete the "User Profile" box
5. Under "My Students" click "Add." Enter your child's last name and student ID number
6. Once you confirm your information, you're ready to begin






ALL TRANSPORTATION CHANGES MUST BE MADE THROUGH GOSAFE.


CHANGES MUST be made through *GoSAFE* by 1:45pm the day of the change.

ALL TEASLEY FAMILIES MUST GO INTO GOSAFE AND SET DISMISSAL DEFAULTS
FOR YOUR STUDENT(S).

Steps to set up Go Safe for your student:

1. Log into [ParentVUE](#)
2. Click on, Change My Information (left side of the screen)
3. Click on, Change My Information (Middle of the screen)
4. Click on, Students (left side of the screen)
5. Click on the bus icon  underneath your student's picture
6. On the Dismissal View/Change screen set your student's Default Transportation Mode. This is how your student will go home every day unless you make a change in GoSAFE.

Steps to set up Go Safe for your student:

1. Log into [ParentVUE](#)
2. Click on, Change My Information (left side of the screen)
3. Click on, Change My Information (Middle of the screen)
4. Click on, Students (left side of the screen)
5. Click on the barcode icon  underneath your student's picture
6. Display your barcode (via phone or paper) to our staff in carline each day to start the dismissal process for your child.
 - If you are picking up multiple children, you must display each child's barcode each day.
 - If you are picking up for someone else, they will need to send you their child's barcode for car line pickup.

CARPOOL 411-WHAT YOU NEED TO KNOW!

MORNING ARRIVAL – 7:20-7:50

DISMISSAL – 2:10-2:40

MORNING

2 CARPOOL LANES - IN THE MORNING ONLY!

- REAR ENTRANCE (SPRING HILL ROAD) = PRE-K, KK AND 1ST GRADE w/ siblings from any grade, and students in our learning cottages.
- FRONT ENTRANCE (SPRING HILL PARKWAY) = 2ND – 5TH GRADE STUDENTS
- Wait for staff to arrive on the curb at 7:20 to let your student out!
- Don't wait to be told to come out of your car...when your car comes to a stop, tell your child to hop on out!!
-

CAR DOORS – STUDENTS WILL OPEN & CLOSE THEIR OWN CAR DOORS.

- DRIVERS! **STAY IN YOUR CAR!**
- DRIVERS! BE SURE YOUR STUDENT IS READY TO EXIT THE CAR ON THE CURB SIDE!!
- DRIVERS! SAFETY LOCKS OFF
- PASSENGERS! OPEN & CLOSE YOUR OWN CAR DOOR!

★ **Practice makes Perfect!** If your child is not accustomed to this, don't let their first day of school be the first time they have to get out of the car themselves. Begin working on this skill now! It will help keep carpool moving!

DON'T PARK AND WALK! Don't create a crowd and unsafe situation by parking and walking to the front door or through our bus port! STAY IN YOUR CAR! THAT IS WHAT CARPOOL IS FOR!

- Parents are not permitted to walk students to their classroom, but don't worry, we will make sure your little one gets to class safely! *** 1 or 2 parents/guardians may walk their child to class on the FIRST DAY OF SCHOOL ONLY!!! NO EXTENDED FAMILY, PLEASE!!!***

AFTERNOON

AFTERNOON CARPOOL – ALL students (K-5) will be dismissed in the front of the building (Spring Hill Parkway entrance)

- Carpool will start at 2:10. The latest you can pick up is 2:40.
- Don't be late! Multiple late pickups will result in the loss of car rider privileges.
- You MUST have a GoSAFE Barcode – enrolling adults are able to access this through ParentVUE.

WALKERS – only students who do not get bus service can be dismissed as walkers!

- Students should be walked to the START OF THE SIDEWALK IN THE BUS PORT in the morning.
- They will be monitored by Teasley staff as they enter the 1ST grade hallway entrance.
- Walkers will be released to parents in the PM who are waiting at the START OF THE SIDEWALK IN THE BUS PORT. Please don't create a crowd at the doors or near our bus riders!

❖ HELP US KEEP ARRIVAL AND DISMISSAL EFFICIENT AND SAFE BY FOLLOWING THESE PROCEDURES.

POLICIES AND PROCEDURES

The practices and procedures outlined are not all inclusive. They are presented in accordance with the policies and procedures set forth by CCSD, which may be found on the CCSD website www.cobbk12.org.

*CCSD – Cobb County School District

*CCSD Website: www.cobbk12.org

ABSENCES/ATTENDANCE

Teasley's instructional day begins at 7:50 a.m. Students may arrive no earlier than 7:20 a.m. The school calendar should be given priority when scheduling vacations. Written excuses must be submitted for all absences within three days of the absence, and must include the child's name, teacher, date(s) of absence, reason, and parent's signature. Absences with no documentation will be recorded as unexcused. A doctor's statement verifying illness for all absences may be required in the case of excessive absences.

CHECK OUT

Students may not be checked out after 1:30 p.m. Instructional time is critical to scholastic success; parents are discouraged from checking students out early. Appointments should be scheduled outside of school hours when possible. 10 occurrences may result in a letter from an administrator, and the social worker may be consulted.

RESIDENCY

To attend school in CCSD, proof of residency in the district must be provided at the time of enrollment. Families must notify the school immediately if any change in residence occurs, as well as update your address in ParentVUE. The principal has the right to request additional documentation.

NON-CUSTODIAL PARENTS

Non-Custodial parents are covered by Cobb County Board of Education policy. **It is the responsibility of the parents to provide Teasley with any custody information. If a parent fails to provide such information, the school is not responsible if the child is released to the non-custodial parent.**

Cooperation is needed to make certain that effects of divorce on children are minimized by sensitivity and understanding. By law, no change of custody can take place at school. All information shared will be confidential.

TRANSFERS

If you move during the school year, please contact the office. Provided administrative permission, students who have moved within Cobb County may remain at the school for the remainder of the current semester. This decision is based on attendance, discipline, and the relationship between home and school. If a transfer or

extension is granted parents/guardians must provide transportation.

MEDICAL CONDITIONS

Parents must notify the school of diagnosed medical conditions. Information and requirements for the school should be put in writing by the physician. Medication is administered at school only under specific conditions and requires written permission on the "Authorization to Give Medication at School" form. The dosage and time to be given must be noted. All medication (prescription or non-prescription) brought from home must be in the original, properly labeled container. The date of the bottle must be current within the past twelve months. **Students may not transport any prescription medication containing a controlled substance.** Medications will be stored and dispensed in the clinic. The only exception is if a student needs an inhaler or epi pen. Students may have inhalers with them during the school day with special approval.

ACCIDENTS/ILLNESSES

If an accident occurs during school requiring medical attention, the school will contact a parent. If contact cannot be made, the child may be taken to a local emergency room. Judgment is at the discretion of school authorities; parents assume financial responsibility.

EMERGENCIES

In the case of family emergencies requiring early check out, go directly to the office. Students must be checked out in the office, and the office will contact the classroom to release the child.

EMERGENCY AND EARLY DISMISSAL

An emergency plan must be submitted for every student and should be explained to your children. If no one is home, arrangements must be in place giving your child permission to go to a designated neighbor's house or enter your house alone. If school dismisses early due to inclement weather, listen to local radio and television stations for dismissal information. In an emergency situation, all students will be placed on the bus. Parents must be prepared for this situation. Individual families and neighborhoods should have a contingency plan.

EMERGENCY NUMBERS

It is imperative that accurate and current emergency contact information be on file in the office, the school clinic, and with the classroom teacher. Notify the school if you move, change jobs, phone numbers, or e-mail addresses. You must be reachable in case the need arises. If you need to change individuals designated as emergency contacts, the enrolling adult may do so, through their ParentVUE account.

DRESS CODE

Students are required to adhere to our Standard

School Attire. Students may wear a Teasley spirit shirt with standard attire, pants, skirts, or shorts on Fridays. Violations will result in a call home for a change of clothes.

PERSONAL ITEMS

Students are not to bring any personal items (toys, technology, etc.) to school unless given permission by school staff. Items may be confiscated, and parents notified.

STUDENT FOLDERS

Student folders are provided to all students and are used daily to provide two-way communication between home and school. Parents are responsible for checking folders daily and signing off indicating they have been reviewed.

LOST AND FOUND

Please check our lost and found cabinet, located near the media center. **Label all clothing, lunchboxes, and personal items with your child's first and last names.** Unclaimed items will be donated to a charitable organization monthly.

BOOKBAGS

Check Bookbags daily for communications. Do not bring rolling bags to school.

HOMEWORK

Teasley is a **HOMEWORK FREE SCHOOL!!** Research shows that the most important thing a child can do is read to improve their academic performance. While homework will not be assigned, students should read for at least 20 minutes each day after school.

PETS AT SCHOOL

Administrative permission is required before bringing animals to school.

REPORT CARDS

Grading periods are every nine weeks. Formal reports are posted in ParentVue and parents are encouraged to review these reports with students. Contact your child's teacher with questions regarding the report card.

GRADING POLICY

While the CCSD grading system has been developed cooperatively between the Teaching & Learning Dept. and local school educators, the final evaluation of students is the responsibility of local school administrators and teachers. Central office personnel shall not have the responsibility of assigning or changing any student's grade or evaluation as determined by local school personnel (Policy IHA).

ACADEMIC ALERTS

Teachers may send home interim reports regarding student performance, enabling students to complete work and extend effort to improve grades. Discuss these alerts with your child and make plans to focus on schoolwork.

PROMOTION/RETENTION

If a student's performance indicates a lack of progress and mastery of state standards, classroom teachers can recommend retention at any level. Retention decisions are a collaborative process, but

class placement is ultimately a school decision.

GIFTED PROGRAM (ADVANCED LEARNING PROGRAM)

The gifted (ALP) program at Teasley is called Target; student participation is based on certain criteria. Goals for students include fostering creative/productive thinking, improving research and discussion skills, promoting higher levels of thinking, and extending the academic program.

SPECIAL EDUCATION

Specialized programs are available for students with exceptionalities or disabilities. The school is bound by the Individuals with Disabilities Education Act (IDEA). Contact the school principal or support and services administrator with any questions.

CLASSROOM OBSERVATIONS

School visitors will be limited at this time and must be prearranged with the teacher or front office as we are still in the time of COVID-19. Please sign-in at the school office, and you may be asked to provide a photo ID. A visitor badge or sticker should always be displayed. Classroom observations must be pre-arranged with administrator approval.

VOLUNTEERS

There are many volunteer opportunities. We ask that you please make alternative care arrangements for younger children to ensure the safety of all children, as

well as the integrity of the instructional program.

FIELD TRIPS

Field trips are planned to enrich learning. To attend, students must have written permission. Permission forms will be sent home with information regarding the trip. The cost is shared voluntarily by participating students. Trips may be cancelled if adequate funds are not collected. If your family cannot afford the cost of a field trip, contact your child's teacher. Families may choose to donate extra money to pay for another student. Siblings may not participate. Parent permission is required for in-house field trips as well. Students demonstrating ongoing behavior issues which could threaten safety may not be able to participate.

CELEBRATIONS

Balloons and flower bouquets may not be delivered to students at school and are not allowed on the bus. Birthdays may be celebrated with a small, individually portioned snack (i.e., cookies or cupcakes) **when prearranged with their teacher.** Snacks must be brought to class before instructional time begins or may be dropped off in the office after the bell has rung. Pencils and other school supplies are encouraged as an alternative to sweets.

Party invitations may not be distributed at school unless distributed to all students in the class.

TEXTBOOKS/MATERIALS

Textbooks will be issued to all students and may be

taken home. Students are responsible for proper care and use. Fees will be collected for lost or damaged books.

Encourage responsibility; ensure students arrive at school with all necessary learning materials.

TECHNOLOGY

Technology devices may only be brought to school for academic purposes and at the teacher's request. While cell phones are allowed at school, they must remain off and in backpacks. Cell phones in use at school will be taken to the office for parents to pick up.

PLAYGROUND SAFETY

When weather and time permits teachers may take students outside. Students must have sturdy shoes and weather appropriate clothing.

PHYSICAL EDUCATION

PE is vital to developing the whole child. A written excuse is required for students who cannot participate. If a student cannot participate in more than five consecutive sessions, a physician's statement is required. Students must wear soft-soled shoes on PE days.

COUNSELORS

Teasley's counselors provide classroom guidance lessons, facilitate small groups, work with individual students, and meet with parents and teachers as needed. Inform our counselors if your family or child is experiencing difficulties or needs support. Our counselors can provide

referrals to outside agencies and provide parent workshops to promote your child's success.

CHILD ABUSE/NEGLECT

State laws designate educators as mandated reporters in the event of suspected child abuse or neglect. CCSD staff are protected against legal consequences. If abuse or neglect is suspected, a formal report will be made to the Department of Family and Children's Services. It is not required for parents to be informed prior to a referral being made or the student being questioned.

SEXUAL HARRASSMENT

Students shall be able to enjoy an educational environment free from all forms of discrimination including sexual harassment. Sexual harassment is unlawful under federal law and is specifically prohibited by the Board of Education and will not be tolerated.

BULLYING

Teasley does not tolerate bullying on school property, on school vehicles, at bus stops, or at school related functions or activities. This includes cyber bullying. Students should report bullying to a trusted adult immediately.

DRUGS

Teasley is a drug-free school. A student/adult shall not have on his/her person or be in possession of drugs or drug related paraphernalia.

INTERROGATION AND SEARCHES

The administrator at each CCSD school or authorized representative may, with probable cause to suspect student involvement, conduct reasonable interrogations and searches to properly investigate and address student misconduct or safety issues. Refer to Policy JCAB.

RSVP (REPORT SCHOOL VIOLENCE PROMPTLY)

A CCSD violence hotline is in place to support the safety of our students. To report any violence, threats, or security issues concerning our school, call 770-499-3911. Contact the office to ensure immediate response.

PRINCIPAL'S ADVISORY COUNCIL

The Advisory Council is comprised of teachers, parents, and community representatives who meet during the year to discuss issues, initiatives, legislation, and ways to improve student performance.

COBB COUNTY SCHOOL BOARD POLICIES

Cobb County School Board policies are mentioned throughout this handbook. The entire collection of policies can be accessed online the CCSD website.

IN CASE YOU MISSED IT!

Check your child's folder daily!

Provide accurate & current emergency contact information

Changes to transportation must be made in GoSAFE

Parents may not bring fast food lunches for students

Please do not exceed 15 miles per hour when driving on school property

Party invitations may not be distributed at school unless distributed to all students in the class.

STUDENT ORGANIZATIONS

NEWS CREW

4th and 5th grade students may apply to participate in news crew in various roles (i.e., director, news anchor, sound and video mixer). The news will play daily on the school-wide broadcast.

SAFETY PATROL

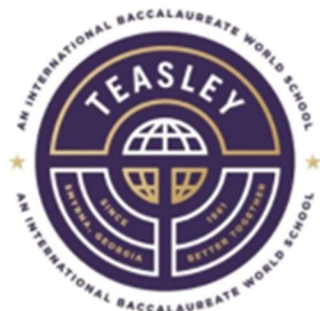
Select 4th and 5th grade students help monitor student behavior as they arrive in the morning and leave in the afternoon, promoting responsibility and citizenship.

STUDENT COUNCIL

3rd, 4th, and 5th grade students are elected to serve on this important committee. These students assume leadership roles and support programs at school.

TIGER SQUAD

5th grade students will be leaders in the mornings, helping on the curb at carpool. This group is by invitation and is managed by administration.



PTA[®]

everychild.one voice.[®]

#BETTERTOGETHER

Teasley's PTA is a vital component of the success of our school. Each year Teasley's PTA provides additional support for staff, technology, and resources necessary to meet instructional goals set forth for all Teasley students. PTA promotes a family friendly environment, providing fun programs and activities throughout the year where parents can demonstrate their support for their children's academic achievements and the teachers who guide them. Membership costs \$20.00 per family or \$10.00 individually. A few of the programs/initiatives sponsored by PTA are:

- Campus Beautification
- Family Engagement & Inclusion
- Student Performances
- Field Day
- Partners in Education
- Reflections Art Contest
- International Baccalaureate Support
- Technology Enhancements
- Spirit Nights
- Prospective Parent Coffees
- All Pro Dads
- Teacher & Staff Appreciation
- Fundraisers
- Yearbook
- Event Coordinators & Room Parents
- Meet & Greet & School Tours
- Spirit Wear
- International Night
- Family Event Nights
- Sports Nights (Braves, Atlanta United...)

Beginning July 1st, you can join PTA for the 23-24 school year – just scan the below QR code to get started!



23-24 PTA Membership

Please visit the PTA website for the PTA Officers and Committee Chairs along with their contact information:

www.TEASLEYPTA.com

PAWS FOUNDATION

The Teasley PAWS Foundation is a charitable non-profit volunteer organization established in 2006 to work hand in hand with the PTA to enhance educational opportunities for all students of Teasley Elementary School. The Foundation provides support beyond what the CCSD budget offers. The Foundation allows parents, businesses, foundations, and local clubs to support Teasley, with donations going directly to school-specific projects. This year PAWS and PTA are working together to fund special projects and resources for all Teasley students. In addition, they will support professional development and resources to support the implementation of the Primary Years Program of International Baccalaureate for teachers and supplemental funding in school areas such as the clinic, music, art, physical education, etc.

The goal of the Foundation is to provide all students with programs and capital improvements to maintain excellence in the classroom and beyond.

Please visit <https://teasleyschoolfoundation.org> for the contact information of the PAWS officers.



WAYS YOU CAN SUPPORT TEASLEY

- ❖ **Donate to the Tiger Fund**
- ❖ **See if your company will match your gift**
 - ❖ **Support the Tiger Trot**
- ❖ **Attend Restaurant Nights & Purple Party**
- ❖ **Participate in events throughout the year**