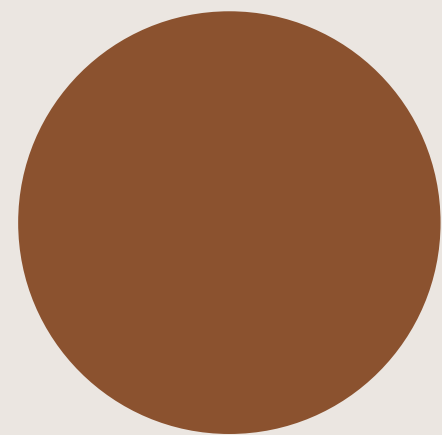




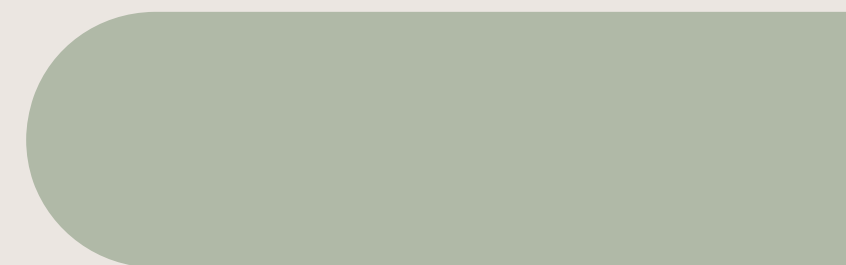
# Rising 6th Grade Parent Night

WELCOME!



# *Welcome!*

We are so happy to have you at Lost Mountain for the 2025–2026 School Year

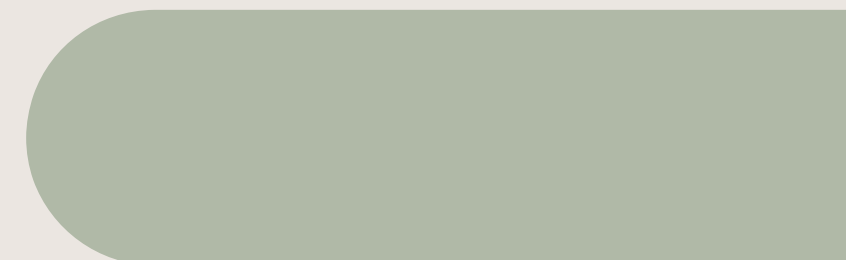






# *Administration!*

Principal- Josh Fowler



# ADMINISTRATION 24-25

**Ms. Amy Shannon**

6th Grade, 7th Grade A-L  
Assistant Principal



**Mr. Austin Smith**

8th grade, 7th Grade M-Z  
Assistant Principal



**Ms. Laura Capes**

Student Support Services  
6th-8th







# AMY SHANNON

ASSISTANT PRINCIPAL

6TH GRADE  
7TH GRADE A-L

21 years in Middle School Education  
Previous Cobb Schools:  
Lost Mountain, Durham, McCleskey, and  
McClure Middle Schools



*I am excited to welcome you all to Lost  
Mountain Middle School*

# AUSTIN SMITH

ASSISTANT PRINCIPAL

7TH GRADE  
8TH GRADE M-Z

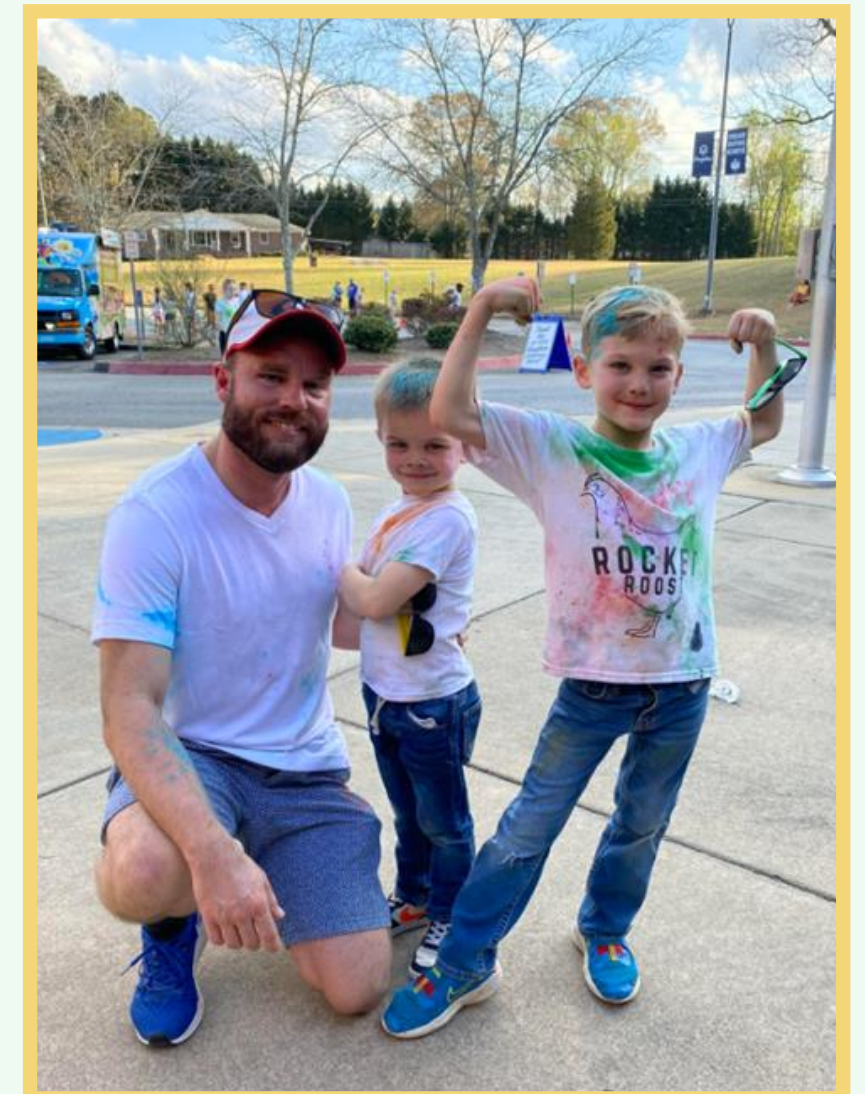
17 years as an educator

8th year as an administrator

Previous administration experience in

Cobb:

McEachern and Dickerson



*I love working with the students at Lost Mountain and being able to serve the community where my kids attend school!*





## Tracy Fields

8th Grade  
6th Grade A-L

KICKS CLUB

High School  
Registration



Individual support  
Small Groups  
Classroom Lessons  
Leadership Team  
CORE Team  
Hot Topics  
Transitions  
504



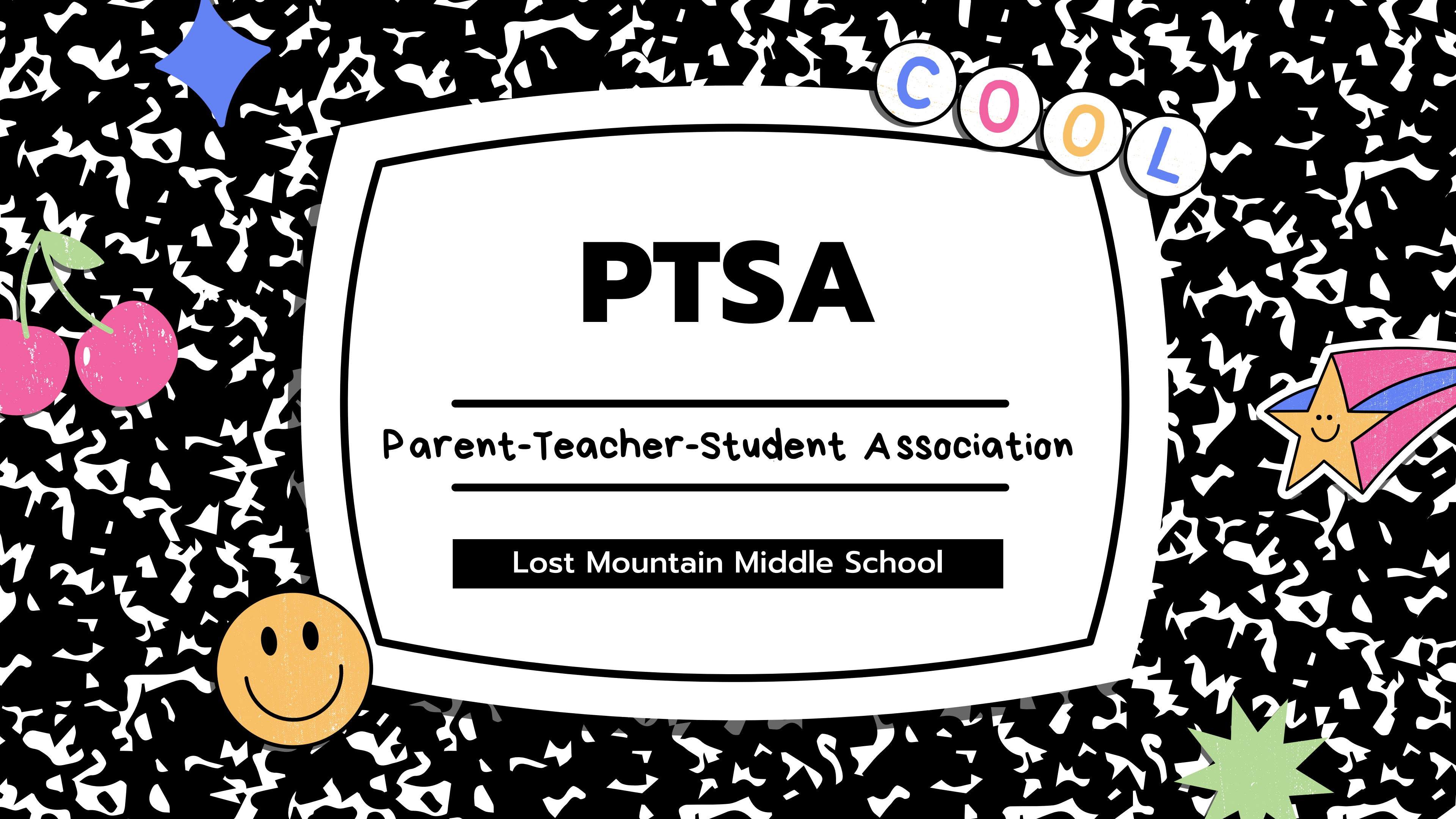
## Valerie Wombles

7th Grade  
6th Grade M-Z

SOS CLUB

Middle School  
Transition





C O O L

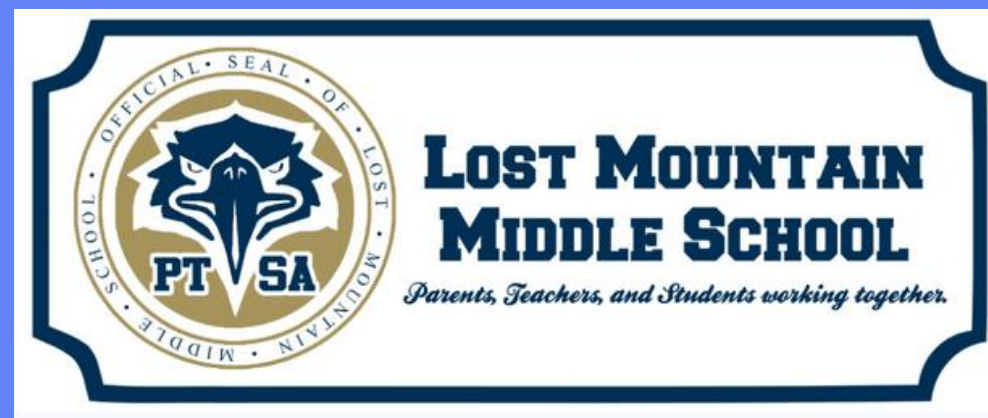
# PTSA

---

Parent-Teacher-Student Association

---

Lost Mountain Middle School



## LMMS PTSA AT WORK

Grade level social events  
Quarterly Honor Roll Celebrations  
Staff of the Month recognition  
Staff Appreciation events  
Student Members Only treats  
Teacher grants  
Reflections  
Red Ribbon Week  
School Store  
Holiday Shop  
Spirit Nights  
Chick Fil-A Biscuit Tuesdays  
SOAR Fridays



## LMMS PTSA MEMBERSHIP DRIVE

- \*Leveled Memberships  
offering 2 memberships per purchase
- \*Begins in July
- \*Supports educational goals and activities.
- \*No additional fundraising

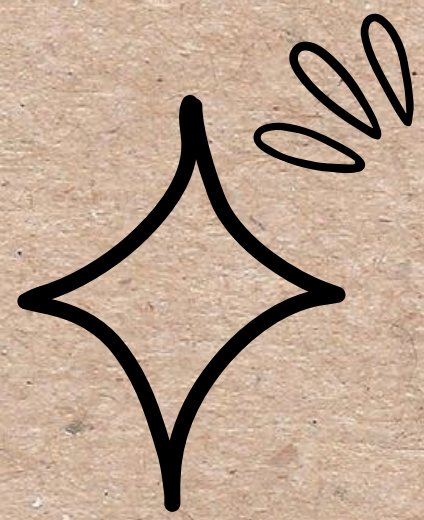
FIND US ON FACEBOOK TO KEEP UP  
WITH ALL THE LATEST NEWS!

[VISIT OUR WEBSITE](#)

[VISIT OUR ONLINE  
STORE](#)







# WHAT DO WE BELIEVE ABOUT MIDDLE SCHOOL?



- ◆ Time to build academic skills for success
- ◆ Grow and develop interpersonal skills
- ◆ Self-advocacy
- ◆ Strength of character
- ◆ Responsibility
- ◆ Organization
- ◆ Recognize that each grade in middle school has different demands
- ◆ Have a well rounded experience



# Different in Middle School

NEW FRIENDS

MUSIC CLASSES

CONNECTIONS CLASSES

CHANGING CLASSES

7 TEACHERS

NEW CLASSES

EAGLE CARD

LOCKERS

DRESSING OUT IN PE

CLUBS

DRESS CODE

GRADES

HOMEWORK

SOAR FRIDAY

# What does the middle school day look like?



## 6th Grade Schedule

.....

TIME	TASK/ CLASS	STATUS
8:15 AM	Drop off begins	<input type="radio"/>
8:15- 8:50 AM	Study hall in Commons	<input type="radio"/>
8:50 AM	Bell rings for Homeroom	<input type="radio"/>
9:10 AM	Homeroom begins	<input type="radio"/>
9:15 -9:30 AM	Academic Block	<input type="radio"/>
9:30 AM	1st Period- Academic	<input type="radio"/>

TIME	TASK	STATUS
10:24 AM	2nd Period- Academic	<input type="radio"/>
11:17 AM	3rd Period- Academic/ Lunch	<input type="radio"/>
12:43 PM	4th Period- Academic	<input type="radio"/>
1:38 PM	5th Period- Academic	<input type="radio"/>
2:33 PM	6th Period- 1st Connection	<input type="radio"/>
3:26 PM	7th Period- 2nd Connection	<input type="radio"/>
4:15	Dismissal	



# HOW ARE STUDENTS PLACED IN CLASSES?

## When will we receive a schedule?

### 5 Academic Classes

- *On-Level Courses or Advanced Content*

### 2 Connections Classes

- *Music classes are chosen after students have been introduced to the programs*
- *All other classes are determined through a random rotation*

### AC Placement

- *Course Request sent at the end of May*
- *Advanced Content Placement Chart - Located on the LMMS website*

### Final Schedule Distribution

- *At Eagle Camp, July 31*



# To Know

## Morning Arrival

Students proceed to  
the Commons for study  
hall

8:15 AM

Students are released  
to class/homeroom

8:50 AM

## 7 Period Day

Traditional  
Schedule  
with  
Quarterly  
Grades

## Dismissal

4:15 PM

No student  
checkouts after  
3:45 PM



# CONNECTIONS



## MUSIC-CHOICE

BAND  
CHORUS  
ORCHESTRA

## OTHERS- ASSIGNED

PHYSICAL EDUCATION  
MUSIC TECHNOLOGY  
ART  
BUSINESS  
FACS  
HEALTH  
COMPUTER SCIENCE



1:49

4:10







# LMMS BANDS

**BRITTANY MORI & VINCENT ROSE, DIRECTORS**  
BRITTANY.MORI@COBBK12.ORG & VINCENT.ROSE@COBBK12.ORG



## HOW TO JOIN THE BAND:

- 6TH GRADERS WILL ROTATE THROUGH ALL MUSIC CLASSES THE FIRST WEEK OF SCHOOL & RECEIVE ALL FORMS AT THAT TIME. YOU MAY ALSO SIGN UP ONLINE DURING THE FIRST WEEK OF SCHOOL VIA THE LMMS SCHOOL WEBSITE.
- LMMS BANDS ARE THE LARGEST STUDENT ORGANIZATION ON CAMPUS, SERVING ROUGHLY 500 STUDENTS
- Band students make music with their friends every day and get to travel together for special performances and events.
- 8th Graders perform with the High School Bands at football games and local parades
- Award-winning high school programs: the Harrison and Hillgrove Bands have both been recognized among the best in the country!
- Pep Band & Jazz Band meet before school weekly & perform at special events throughout the year

## 6TH GRADE INSTRUMENTS

### Brass Class:

Trumpet, French Horn,  
Trombone, Euphonium, Tuba

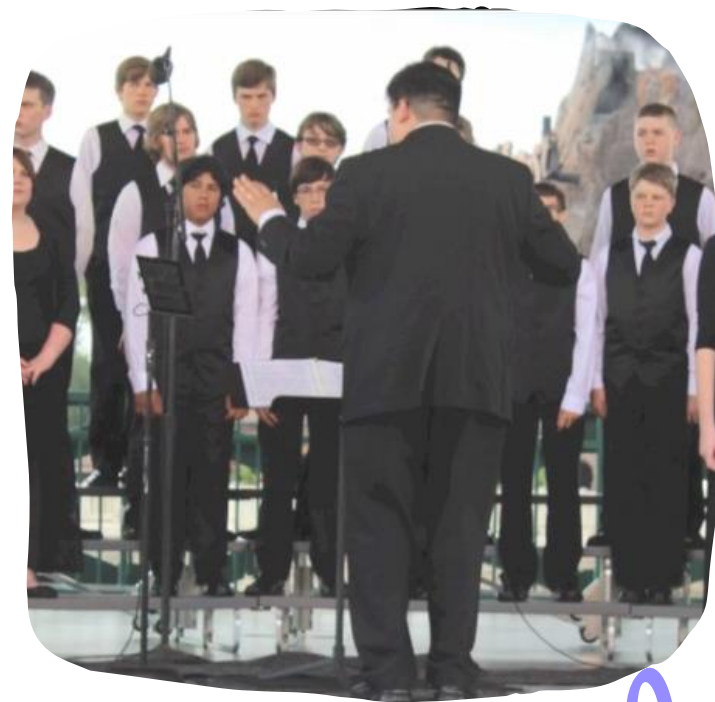
### Woodwind & Percussion Class:

Flute, Clarinet, Alto Saxophone,  
Oboe, Bassoon, & Percussion (drum  
pad & bell kit in 6th grade)





# LOST MOUNTAIN Choral Department



- 6TH, 7TH, AND 8TH GRADE CHORUS CLASSES
- Boys Chorus & Girls Chorus meet before school and get extra rewards.
- Long traditions of excellence. One of the best choral programs in the state.
- No experience necessary. We teach all levels!
- Join with friends & have 3 years of fun together.
- If you can talk, you can sing!





# LMMS ORCHESTRA



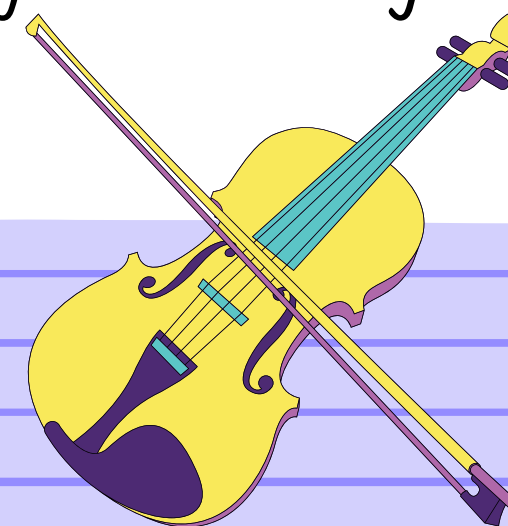
## **DIRECTORS:**

**CATEY BITINAS, LOGAN LYSAGHT**

- *Instruments: Violin, Viola, Cello, or Bass.*
- *No experience necessary*

*Students in orchestra will:*

- *Make music with their friends everyday!*
- *Learn many different styles of music*
- *Play concerts with other middle schools*
- *Make friends to help them grow and adjust to middle school.*





# Physical Education Dress Requirements

\*All students **MUST** change clothes each day for physical education classes



- Athletic shoes must be worn.
- Deodorant is required.
- No aerosol colognes/body sprays or aerosol deodorant to be sprayed at school.
- Shirts cannot be longer than bottoms. It must be obvious that you are wearing bottoms.

\*The principal or designee shall be the final judge as to the appropriateness of the apparel, and whether the apparel is disruptive, unsafe, or in violation of the dress code. If in doubt, do not wear the outfit.





# 6th Grade Supply List

## CORE CLASSES

- ELA- 2 two-pocket folder, 1 composition notebook
- MATH- 2 two-pocket folder, basic 4-function calculator
- READING- 1 two-pocket folder
- SOC STDY- 1 two-pocket folder WITH prongs, 3 clear page protectors, 1 composition book
- SCIENCE- 1 two-pocket folder & INDEX CARDS

## PLEASE NOTE

3-ring binders are NOT needed for 6th grade (only folders with prongs & pockets)

Please provide at least one box or roll with homeroom teacher:

- Tissues (boys)
- Paper towels (girls)

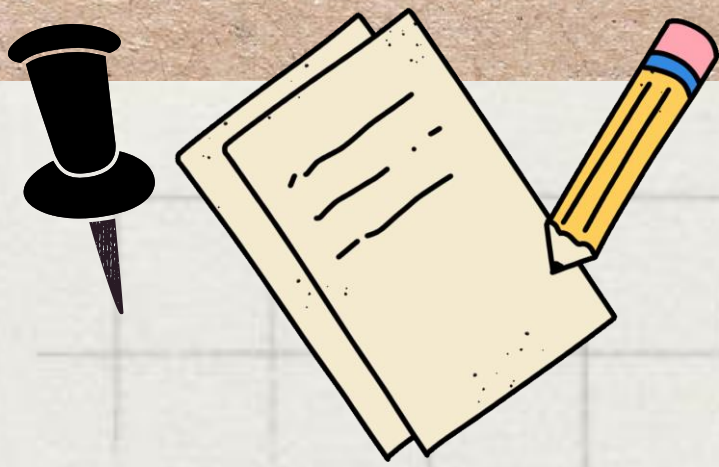
## GENERAL DONATIONS

- § Disinfectant wipes (Clorox wipes, etc.)
- § Hand wipes (Wet Ones, etc.)
- § Hand sanitizer
- § Band-aids
- § Golf pencils

## GENERAL

- Backpack
- Glue Sticks/ Scissors
- Pens & Pencils
- Notebook paper
- Dry Erase Markers
- Wired Earbuds(cheap)
- Colored Pencils
- Highlighter (1or2)
- Index Cards
- Sticky Notes
- Pencil Pouch
- Handheld Pencil Sharpener





# WHAT IF....



- Tardy to school – visit main office after 9:10 AM to sign in
- Absent – Notes must be emailed within **3 days** of returning to school to attendance clerk- [allison.miller@cobbk12.org](mailto:allison.miller@cobbk12.org)
- Transportation changes – must contact main office before 3:00 PM
- No bus passes will be permitted
- No student sign out's after 3:45 PM
- Medical needs- See Clinic tab on school website



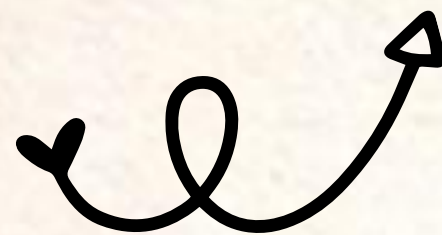


*Do not  
forget*

# Forgotten Items



- Lunch charges are permitted up to -\$6.75  
Any charges over -\$6.75 (3 meals) will result in the student receiving an alternate meal. No a la carte items allowed with negative balance.
- Students must use the office phone, not a cell phone, to call during the school day, if they need to reach out to their parent. Please do not text your students during school day.







MENU

# ELECTRONIC DEVICES

START

All personal electronic devices (cell phones, tablets, iPods, PSPs, Smart watches, audio earpieces/ air pods, headphones, etc.) must be turned off, including the notification setting, upon arrival at school. Beginning at 8:50, all personal electronic devices must not be visible until students have left the building for the day.







# Dress Code

**To promote a safe environment that is aligned with our school vision of expanding the pursuit of excellence.**

**All students shall maintain the following minimum standard of dress:**

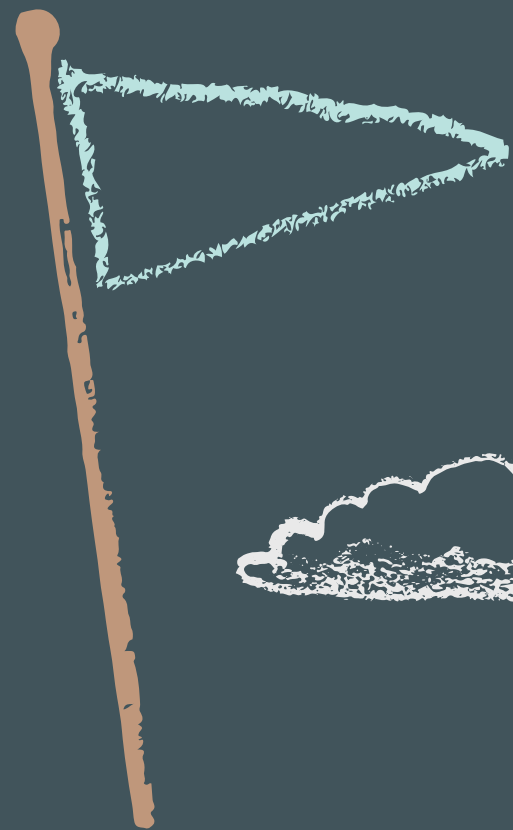
1. Appropriate shoes shall be worn.
2. Midriffs shall be covered.
3. Appropriate under-garments shall be worn and may not be visible.
4. Strapless garments cannot be worn.
5. Tank-tops: 2 inches width at shoulder.
6. Appropriate shorts that cover the entire backside.
7. No caps, hats, bandanas nor hoods covering the head are to be worn in the school buildings during the school day.
8. Pajamas and blankets are not to be worn.
9. Clothing or ornamentation that does any of the following is prohibited:
  - a. Displays or advertises substances illegal for minors.
  - b. Displays suggestive phrases, designs, markings, or profanities.
  - c. Advocates, promotes, or suggests illegal activity.

\*The principal or designee shall be the final judge as to the appropriateness of the apparel, and whether the apparel is disruptive, unsafe, or in violation of the dress code. If in doubt, do not wear the outfit.





What should  
you remember  
as you prepare  
for middle  
school?



*Caring teachers and staff*



*Middle School is full of firsts*

*We are building skills for the future*



*Organization is Key to success!*

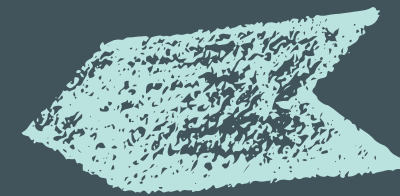
*Create a routine to prepare for a new schedule in advance.*

*Guide your student toward independence; we will help you!*



# Getting ready for the first week...

- 6th Grade Eagle Camp - July 31
  - 1 p.m. (students only)
  - 2:45 p.m. (parent meeting then join students in homeroom)
- Meet & Greet ~ Visit Homeroom Class
- Supply lists will be posted on the web site
- Folder, paper, and pen/pencil for first day
- Lockers after paperwork is returned
- Lunch in 600 commons -
- 25 minutes (no microwave)





# How to have a great middle school experience?

Focus on Organization: Notebooks, Homework Folder

Online Parent & Student Tools: ParentVue, StudentVue, CTLS

Establish a routine for your student



# HOW CAN MY STUDENT GET INVOLVED?

Find a full list on LMMS website



**INTERNATIONAL  
NIGHT**



**INTRAMURALS**



**MUSIC  
DEPARTMENT**



**BLACK HISTORY  
BOWL**



**KICKS CLUBS**



**ACADEMIC TEAM**



**FBLA**



**HELPING HANDS**



**FCA**



**STUDENT  
COUNCIL**



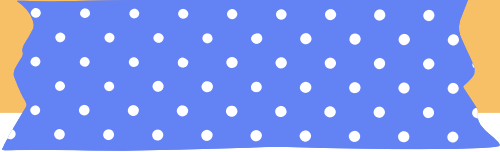
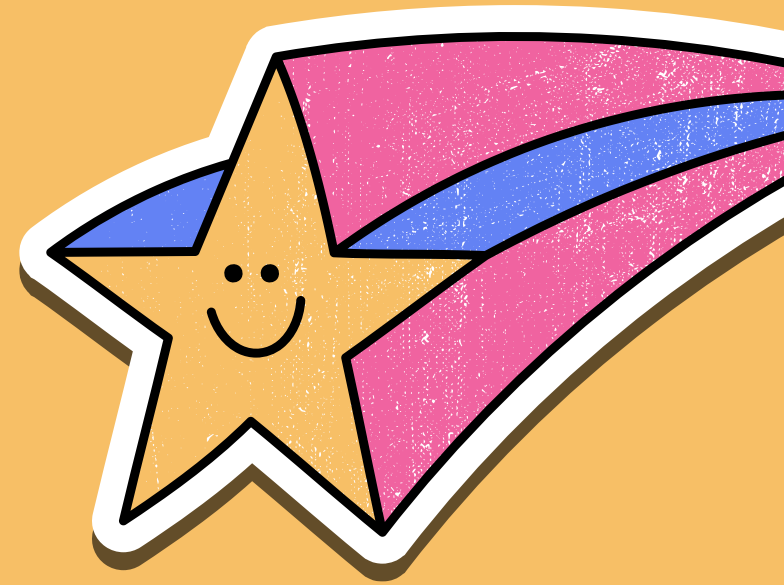
**YEARBOOK**



**SOURCES OF  
STRENGTH**



# How can YOU get involved?




REPRESENT PARENTS ON THE  
PRINCIPAL ADVISORY COUNCIL



JOIN PTSA



Subscribe to CTLS Blasts



VOLUNTEER IN OUR SCHOOL-  
INQUIRE THROUGH PTSA ABOUT  
OPPORTUNITIES





# HOW TO STAY CONNECTED



## Emails

- CTLS email blasts/texts
- Email Teachers through CTLS
- PTSA e-blast



## Websites

- CTLS
- ParentVue
- StudentVue
- LMMS School Website
- PTSA Website

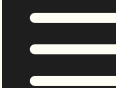


## Join Us

- Volunteer
- Come to school events







# FOLLOW US



PTSA on Facebook

Lost Mountain Middle  
School PTSA



cobbk12.org



@cobbschools



Cobb County Schools



## 6<sup>th</sup> Grade Eagle Camp- July 31<sup>st</sup> 1:00



- Students meet in theater at 1:00
  - Go to homerooms and meet teacher
  - Tours
  - Get basic information (receive schedules, practice lockers, pick up laptops, practice lunchline, walk their schedule and meet teachers, etc.)
- 
- Parents meet in theater at 2:45
  - You will be given a sticker with your child's homeroom teacher and room number.
  - Meet your student in their homeroom
  - Be given a tour by your child
  - Briefly meet your teachers





# THANK YOU



We can't wait to see you in the Fall!