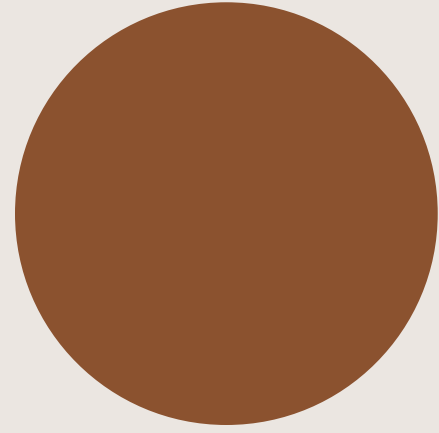




Rising 6th Grade Parent Night

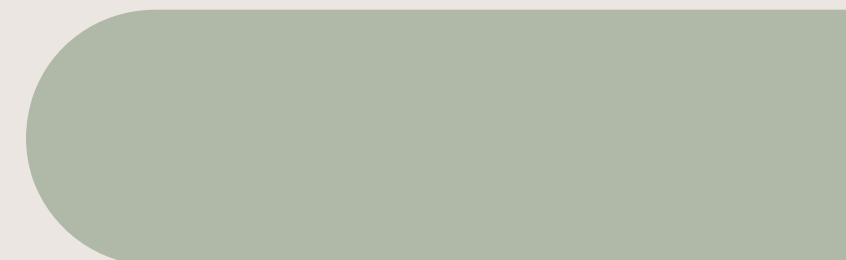
WELCOME!





Welcome!

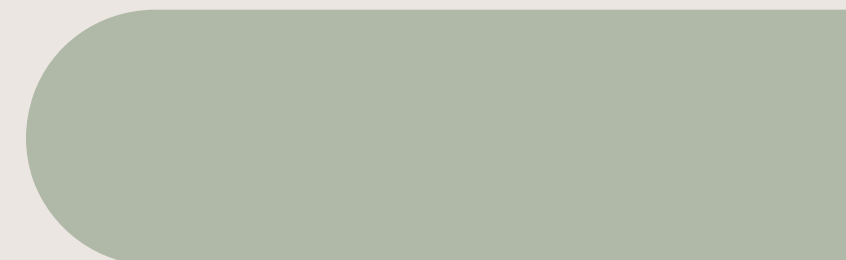
We are so happy to have you at Lost Mountain for the 2026–2027 School Year



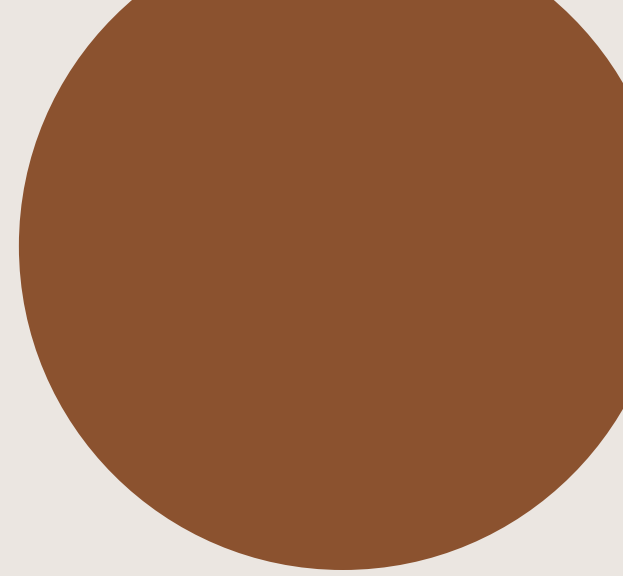


Administration!

Principal- Josh Fowler



ADMINISTRATION 26-27



Ms. Crecy Peterson

6th Grade, 7th Grade A-L
Assistant Principal



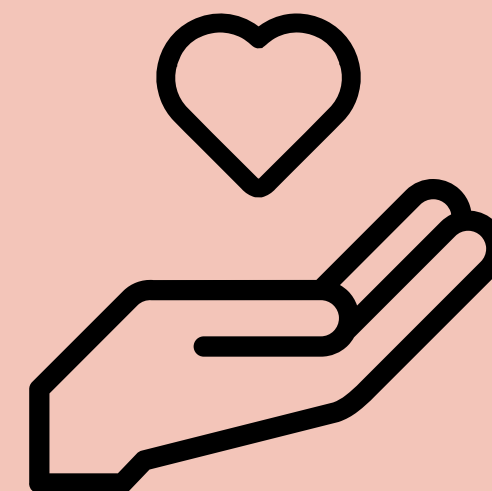
Mr. Austin Smith

8th grade, 7th Grade M-Z
Assistant Principal



Ms. Laura Capes

Student Support Services
6th-8th



Crecy Peterson

ASSISTANT PRINCIPAL

6TH GRADE
7TH GRADE A-L

17 years in Education (15 yrs in Middle Grades)
Prior to Administration: Science Teacher
Previous Cobb Schools: Durham Middle

"Middle School is like trying to find your way out of a maze...blind-folded...while everyone else is running around screaming 😂"



Welcome to Lost Mountain! I'm so glad you're here!

AUSTIN SMITH

ASSISTANT PRINCIPAL

7TH GRADE
8TH GRADE M-Z

17 years as an educator

8th year as an administrator

Previous administration experience in

Cobb:

McEachern and Dickerson



I love working with the students at Lost Mountain and being able to serve the community where my kids attend school!



Valerie Wombles

8th Grade
7th Grade M-Z

Sources of Strength Program

High School Registration
Middle School Transition



Individual support
Small Groups
Classroom Lessons
Leadership Team
CORE Team
Hot Topics
Transitions
504

Assist in dealing with a crisis.

Help you to apply interpersonal skills.

Help you to learn academic achievement strategies.

SCHOOL Counselors

Provide academic planning and goal setting.

Listen and provide support.

Teach you to manage your emotions.

Advocate for student needs.

Heart and Mind Teaching

New Counselor TBD

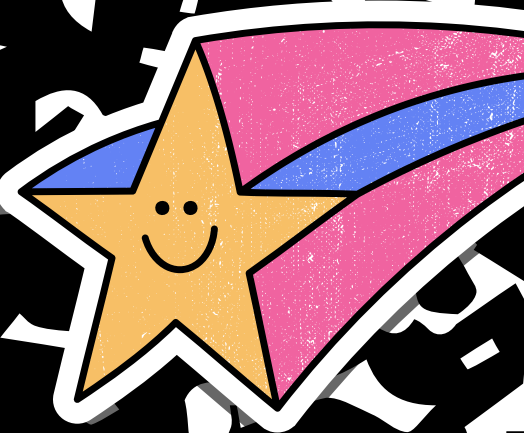
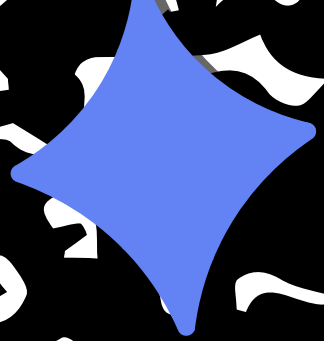
6th Grade
7th Grade A-L

C O O L

PTSA

Parent-Teacher-Student Association

Lost Mountain Middle School





LMMS PTSA AT WORK

Grade level social events
Quarterly Honor Roll Celebrations
Staff of the Month recognition
Staff Appreciation events
Student Members Only treats
Teacher grants
Reflections
Red Ribbon Week
School Store
Holiday Shop
Spirit Nights
Chick Fil-A Biscuit Tuesdays
SOAR Fridays

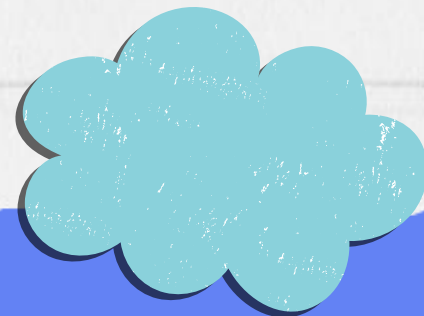
LMMS PTSA MEMBERSHIP DRIVE

*Leveled Memberships
offering 2 memberships per purchase
*Begins in July
*Supports educational goals and activities.
*No additional fundraising

FIND US ON FACEBOOK TO KEEP UP
WITH ALL THE LATEST NEWS!

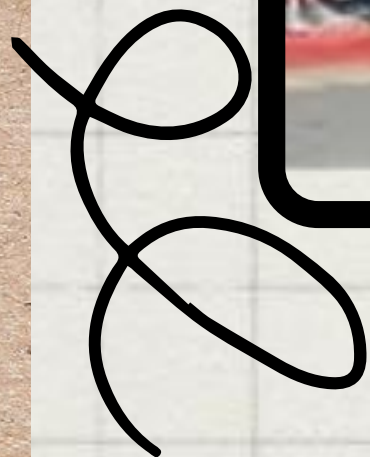
[VISIT OUR WEBSITE](#)

[VISIT OUR ONLINE
STORE](#)





WHAT DO WE BELIEVE ABOUT MIDDLE SCHOOL?



- ◆ Time to build academic skills for success
- ◆ Grow and develop interpersonal skills
- ◆ Self-advocacy
- ◆ Strength of character
- ◆ Responsibility
- ◆ Organization
- ◆ Recognize that each grade in middle school has different demands
- ◆ Have a well rounded experience

Different in Middle School

NEW FRIENDS

MUSIC CLASSES

CONNECTIONS CLASSES

CHANGING CLASSES

7 TEACHERS

NEW CLASSES

EAGLE CARD

LOCKERS

DRESSING OUT IN PE

CLUBS

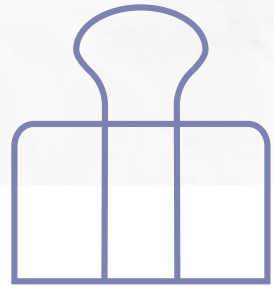
DRESS CODE

GRADES

HOMEWORK

SOAR FRIDAY

To Know



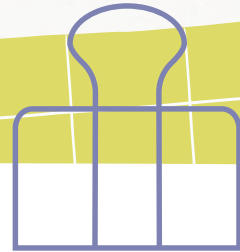
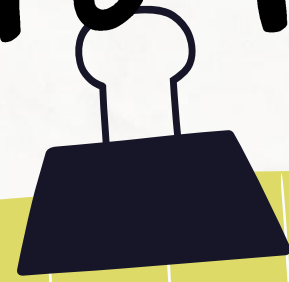
Morning Arrival

Students proceed to
the Commons for study
hall

8:15 AM

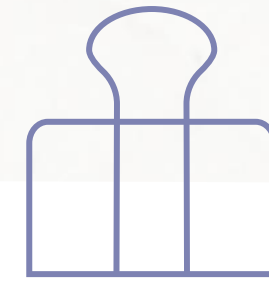
Students are released
to class/homeroom

8:50 AM



7 Period Day

Traditional
Schedule
with
Quarterly
Grades



Dismissal

4:15 PM

No student
checkouts after

3:45 PM



What does the middle school day look like?



6th Grade Schedule

.....

| TIME | TASK/ CLASS | STATUS |
|---------------|-------------------------|-----------------------|
| 8:15 AM | Drop off begins | <input type="radio"/> |
| 8:15- 8:50 AM | Study hall in Commons | <input type="radio"/> |
| 8:50 AM | Bell rings for Homeroom | <input type="radio"/> |
| 9:10 AM | Homeroom begins | <input type="radio"/> |
| 9:15 -9:30 AM | Academic Block | <input type="radio"/> |
| 9:30 AM | 1st Period- Academic | <input type="radio"/> |

| TIME | TASK | STATUS |
|----------|-----------------------------|-----------------------|
| 10:24 AM | 2nd Period- Academic | <input type="radio"/> |
| 11:17 AM | 3rd Period- Academic/ Lunch | <input type="radio"/> |
| 12:43 PM | 4th Period- Academic | <input type="radio"/> |
| 1:38 PM | 5th Period- Academic | <input type="radio"/> |
| 2:33 PM | 6th Period- 1st Connection | <input type="radio"/> |
| 3:26 PM | 7th Period- 2nd Connection | <input type="radio"/> |
| 4:15 | Dismissal | |

HOW ARE STUDENTS PLACED IN CLASSES?

When will we receive a schedule?

5 Academic Classes

- *On-Level Courses or Advanced Content*

2 Connections Classes

- *Music classes are chosen after students have been introduced to the programs*
- *All other classes are determined through a random rotation*

AC Placement

- *Course Request sent at the end of May*
- *Advanced Content Placement Chart - Located on the LMMS website*

Final Schedule

Distribution

- *At Eagle Camp, July 31*



CONNECTIONS



MUSIC-CHOICE

BAND
CHORUS
ORCHESTRA

OTHERS-ASSIGNED

PHYSICAL EDUCATION
MUSIC TECHNOLOGY
ART
BUSINESS
FACS
HEALTH
COMPUTER SCIENCE



1:49 4:10

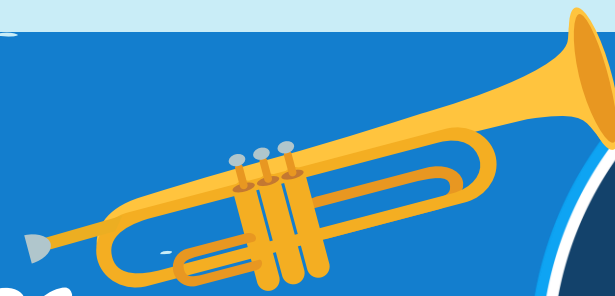




LMMS BANDS

BRITTANY MORI & VINCENT ROSE, DIRECTORS

BRITTANY.MORI@COBBK12.ORG & VINCENT.ROSE@COBBK12.ORG



HOW TO JOIN THE BAND:

- 6TH GRADERS WILL ROTATE THROUGH ALL MUSIC CLASSES THE FIRST WEEK OF SCHOOL & RECEIVE ALL FORMS AT THAT TIME. YOU MAY ALSO SIGN UP ONLINE DURING THE FIRST WEEK OF SCHOOL VIA THE LMMS SCHOOL WEBSITE.
- LMMS BANDS ARE THE LARGEST STUDENT ORGANIZATION ON CAMPUS, SERVING ROUGHLY 500 STUDENTS
- Band students make music with their friends every day and get to travel together for special performances and events.
- 8th Graders perform with the High School Bands at football games and local parades
- Award-winning high school programs: the Harrison and Hillgrove Bands have both been recognized among the best in the country!
- Pep Band & Jazz Band meet before school weekly & perform at special events throughout the year

6TH GRADE INSTRUMENTS

Brass Class:

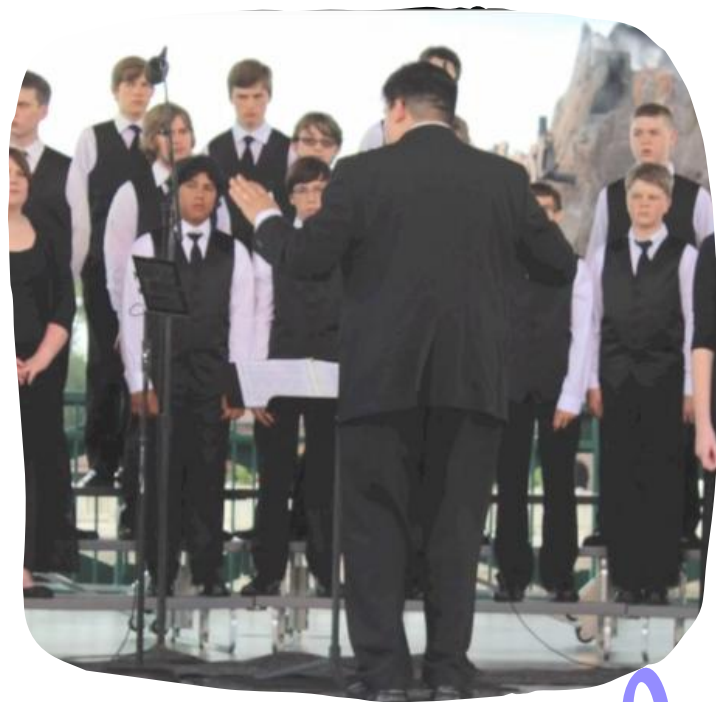
Trumpet, French Horn,
Trombone, Euphonium, Tuba

Woodwind & Percussion Class:

Flute, Clarinet, Alto Saxophone,
Oboe, Bassoon, & Percussion (drum
pad & bell kit in 6th grade)



LOST MOUNTAIN Choral Department



- 6TH, 7TH, AND 8TH GRADE CHORUS CLASSES
- Boys Chorus & Girls Chorus meet before school and get extra rewards.
- Long traditions of excellence. One of the best choral programs in the state.
- No experience necessary. We teach all levels!
- Join with friends & have 3 years of fun together.
- If you can talk, you can sing!



LMMS ORCHESTRA



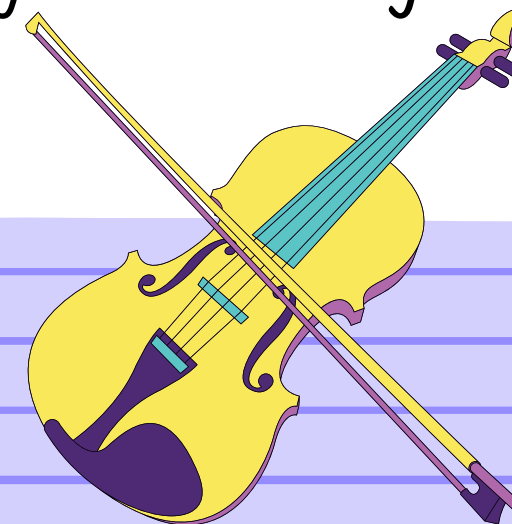
DIRECTORS:

CATEY BITINAS, LOGAN LYSAGHT

- *Instruments: Violin, Viola, Cello, or Bass.*
- *No experience necessary*

Students in orchestra will:

- *Make music with their friends everyday!*
- *Learn many different styles of music*
- *Play concerts with other middle schools*
- *Make friends to help them grow and adjust to middle school.*



Physical Education Dress Requirements

*All students **MUST** change clothes each day for physical education classes



- Athletic shoes must be worn.
- Deodorant is required.
- No aerosol colognes/body sprays or aerosol deodorant to be sprayed at school.
- Shirts cannot be longer than bottoms. It must be obvious that you are wearing bottoms.

*The principal or designee shall be the final judge as to the appropriateness of the apparel, and whether the apparel is disruptive, unsafe, or in violation of the dress code. If in doubt, do not wear the outfit.



6th Grade Supply List (last year)

CORE CLASSES

- ELA- 2 two-pocket folder, 1 composition notebook
- MATH- 2 two-pocket folder, basic 4-function calculator
- READING- 1 two-pocket folder
- SOC STDY- 1 two-pocket folder WITH prongs, 3 clear page protectors, 1 composition book
- SCIENCE- 1 two-pocket folder & INDEX CARDS

PLEASE NOTE

3-ring binders are NOT needed for 6th grade (only folders with prongs & pockets)

Please provide at least one box or roll with homeroom teacher:

- Tissues (boys)
- Paper towels (girls)

GENERAL DONATIONS

- § Disinfectant wipes (Clorox wipes, etc.)
- § Hand wipes (Wet Ones, etc.)
- § Hand sanitizer
- § Band-aids
- § Golf pencils

GENERAL

- Backpack
- Glue Sticks/ Scissors
- Pens & Pencils
- Notebook paper
- Dry Erase Markers
- Wired Earbuds(cheap)
- Colored Pencils
- Highlighter (1or2)
- Index Cards
- Sticky Notes
- Pencil Pouch
- Handheld Pencil Sharpener



WHAT IF....



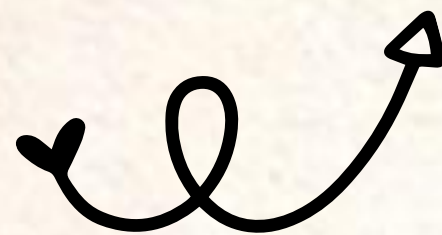
- Tardy to school – visit main office after 9:10 AM to sign in
- Absent - Notes must be emailed or sent through CTLS within **3 days** of returning to school - attendance clerk- emily.nadeau@cobbk12.org
- Transportation changes – must contact main office before 3:00 PM
- No bus passes will be permitted
- No student sign out's after 3:45 PM
- Medical needs- See Clinic tab on school website

Forgotten Items



Do not forget

- Lunch charges are permitted up to -\$6.75
Any charges over -\$6.75 (3 meals) will result in the student receiving an alternate meal. No a la carte items allowed with negative balance.
- Students must use the office phone, not a cell phone, to call during the school day, if they need to reach out to their parent. Please do not text your students during school day.





MENU

ELECTRONIC DEVICES

START

All personal electronic devices (cell phones, tablets, iPods, PSPs, Smart watches, audio earpieces/ air pods, headphones, etc.) must be turned off, including the notification setting, upon arrival at school. Beginning at 8:50, all personal electronic devices must not be visible until students have left the building for the day.



Dress Code

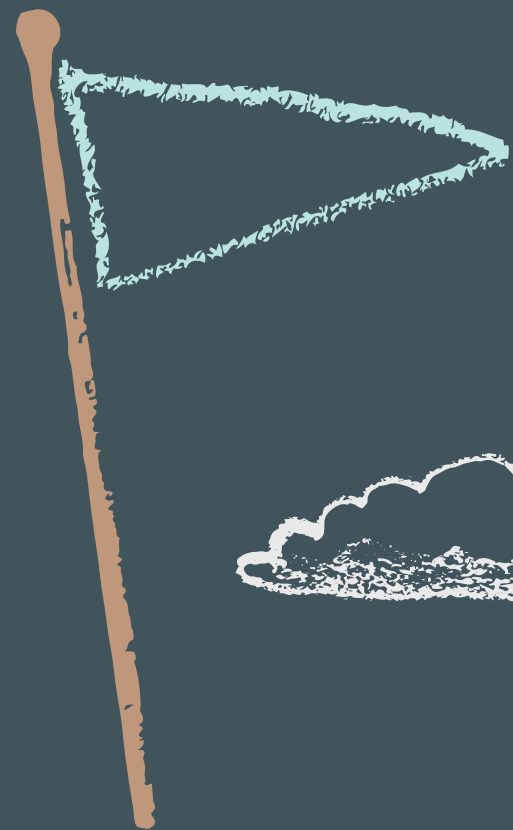
To promote a safe environment that is aligned with our school vision of expanding the pursuit of excellence.

All students shall maintain the following minimum standard of dress:

1. Appropriate shoes shall be worn.
2. Midriffs shall be covered.
3. Appropriate under-garments shall be worn and may not be visible.
4. Strapless garments cannot be worn.
5. Tank-tops: 2 inches width at shoulder.
6. Appropriate shorts that cover the entire backside.
7. No caps, hats, bandanas nor hoods covering the head are to be worn in the school buildings during the school day.
8. Pajamas and blankets are not to be worn.
9. Clothing or ornamentation that does any of the following is prohibited:
 - a. Displays or advertises substances illegal for minors.
 - b. Displays suggestive phrases, designs, markings, or profanities.
 - c. Advocates, promotes, or suggests illegal activity.

*The principal or designee shall be the final judge as to the appropriateness of the apparel, and whether the apparel is disruptive, unsafe, or in violation of the dress code. If in doubt, do not wear the outfit.

What should
you remember
as you prepare
for middle
school?



Caring teachers and staff



Middle School is full of firsts

We are building skills for the future



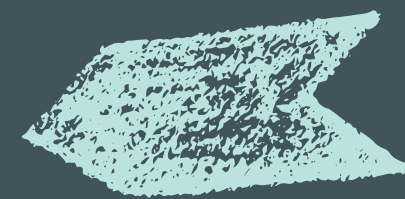
Organization is Key to success!

Create a routine to prepare for a new schedule in advance.

Guide your student toward independence; we will help you!

Getting ready for the first week...

- 6th Grade Eagle Camp - July 30
 - 1 p.m. (students only)
 - 2:45 p.m. (parent meeting then join students in homeroom)
- Meet & Greet ~ Visit Homeroom Class
- Supply lists will be posted on the web site
- Folder, paper, and pen/pencil for first day
- Lockers after paperwork is returned
- Lunch in 600 commons -
- 25 minutes (no microwave)



How to have a great middle school experience?

Focus on Organization: Notebooks, Homework Folder

Online Parent & Student Tools: ParentVue, StudentVue, CTLS

Establish a routine for your student

HOW CAN MY STUDENT GET INVOLVED?

Find a full list on LMMS website



INTERNATIONAL NIGHT



INTRAMURALS



MUSIC DEPARTMENT



BLACK HISTORY BOWL



KICKS CLUBS



ACADEMIC TEAM



FBLA



HELPING HANDS



FCA



STUDENT COUNCIL

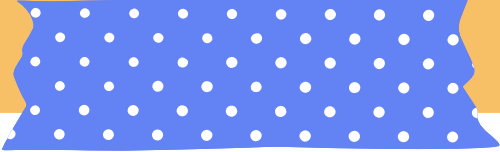
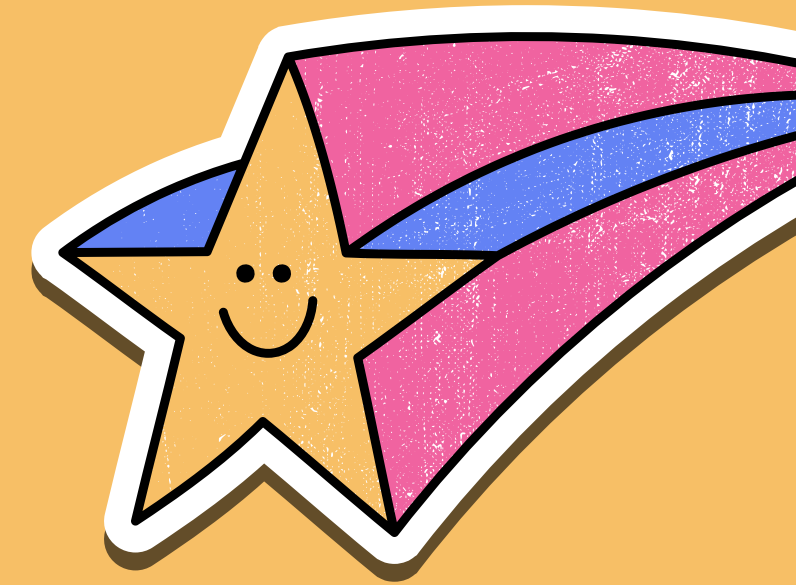


YEARBOOK



SOURCES OF STRENGTH

How can YOU get involved?




REPRESENT PARENTS ON THE
PRINCIPAL ADVISORY COUNCIL



JOIN PTSA



Subscribe to CTLS Blasts



VOLUNTEER IN OUR SCHOOL-
INQUIRE THROUGH PTSA ABOUT
OPPORTUNITIES



HOW TO STAY CONNECTED



Emails

CTLS email blasts/texts
Email Teachers through CTLS
PTSA e-blast



Websites

CTLS
ParentVue
StudentVue
LMMS School Website
PTSA Website



Join Us

Volunteer
Come to school events





FOLLOW US



PTSA on Facebook
Lost Mountain Middle
School PTSA



 cobbk12.org
 [@cobbschools](https://twitter.com/cobbschools)
 www.facebook.com/lostmountaincobb



6th Grade Eagle Camp- July 30th 1:00



- Students meet in theater at 1:00
- Go to homerooms and meet teacher
- Tours
- Get basic information (receive schedules, practice lockers, pick up laptops, practice lunchline, walk their schedule and meet teachers, etc.)

- Parents meet in theater at 2:45
- You will be given a sticker with your child's homeroom teacher and room number.
- Meet your student in their homeroom
- Be given a tour by your child
- Briefly meet your teachers

THANK YOU



We can't wait to see you in the Fall!

