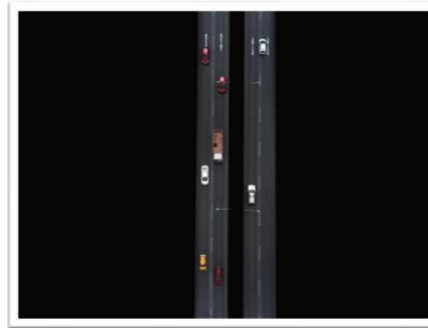




## 3<sup>rd</sup> Grade Unit 8: Two-Dimensional Shapes



### Overview:

In this unit, students will reason about attributes (features) of shapes including parallel segments, perpendicular segments, right angles, and symmetry.

### Learning Targets:

In Unit 8, students will:

- Classify and compare shapes based on their attributes
- Investigate the properties of quadrilaterals
- Determine lines of symmetry in polygons
- Identify perpendicular line segments, parallel line segments, and right angles
- Describe lines and angles in quadrilaterals and other polygons
- Identify faces of 3-dimensional figures.

### Key Vocabulary: (linked to GA DOE Interactive Glossary)

Acute Angle	Angle	Congruent	Cube	Hexagon
Kite	Obtuse Angle	Octagon	Parallel	Parallelogram
Pentagon	Perpendicular	Polygon	Pyramid	Quadrilateral
Rectangle	Rectangular Prism	Rhombus	Right Angle	Segment
Square	Symmetry	Trapezoid	Vertices	

### Supporting Resources:

<http://ctlslearn.cobbk12.org/>

<https://gavirtual.instructure.com/courses/34724#modules>

<https://www.ixl.com/math/grade-3/classify-quadrilaterals>

<https://apps.mathlearningcenter.org/geoboard/>

<https://www.geogebra.org/m/pvjjawmc#material/xM2A2eSE>

<https://toytheater.com/shape-fall/>