

L a s s i t e r
H i g h S c h o o l
P r i n c i p a l A d v i s o r y C o u n c i l
2 0 2 4 - 2 0 2 5 S c h o o l Y e a r



LASSITER HIGH SCHOOL

- VISION: “Reaching Excellence and Climbing Higher” (REACH), reflects the commitment of students, faculty, and staff to high standards of learning and continual improvement.
- MISSION: To serve the needs of individual students by promoting challenging academic standards in a nurturing environment that produces capable, responsible, productive members of society



PURPOSE

The purpose of the Principal Advisory Council...

To provide a means by which parents, community, and school staff can work together to create a better understanding of and mutual respect for each other's concerns and share ideas for school improvement

Consists of school stakeholders...
Students, teachers, parents, community members, and administration

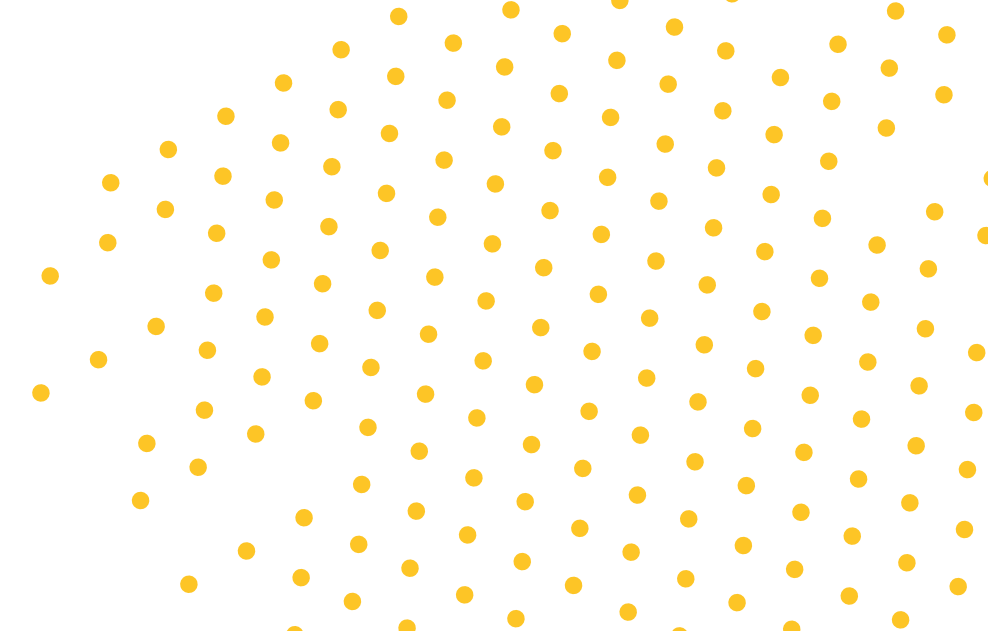
Meeting Dates:

- Tuesday, September 10th
- Tuesday, December 10th
- Tuesday, February 11th
- Tuesday, May 13th



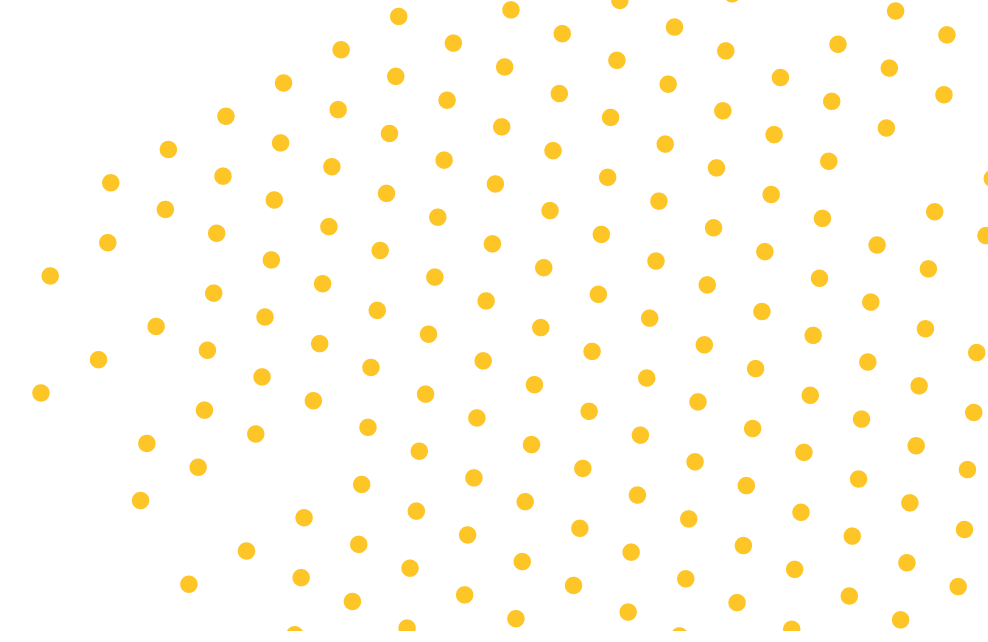
LHS Safety Priorities

- Staff Expectations
 - Wear badge
 - Lock classroom doors
 - Address and redirect unauthorized visitors
 - Monitor halls during class changes
 - Use hall passes
 - Keep classroom window unobstructed
 - No students out of class first 10, last 10



LHS Safety Priorities

- School Safety
 - “See Something, Say Something”
 - Code Red Drill
 - 2 per semester
 - Fire Drills
 - Severe Weather Drills
 - New Signage
 - 2 School Resource Officers
 - Post construction
 - Buzz in front door





PRAYERS AREN'T ENOUGH.

Every student & teacher at Apalachee High School should be alive today. On Friday the 20th, across the state, Georgia's high schoolers will **walk out of school** to demand common sense gun safety measures in Georgia.

WHEN: September 20th

SLOGANS: Prayers Aren't Enough, Our Blood is On Your Hands, Protect Kids Not Guns, Justice for Winder

DRESS CODE: Wear black (even if you can't walkout.)

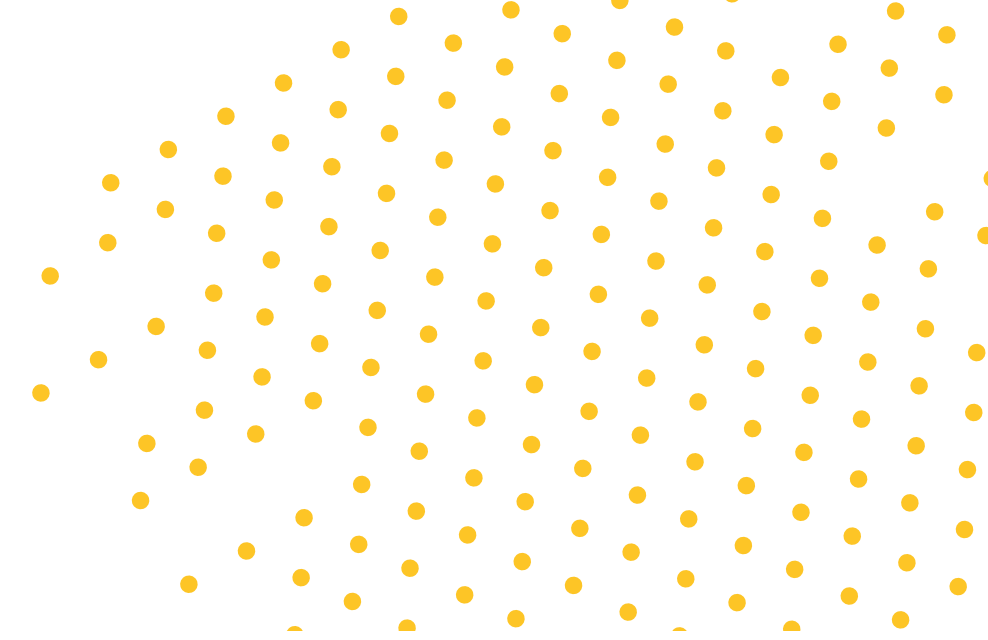
BE CAREFUL & SAFE when spreading the word, recording people's faces, and leaving school.

SHARE WITH EVERY GEORGIA HIGH SCHOOLER YOU KNOW. WE SUCCEED TOGETHER.

STATEWIDE WALKOUT FOR APALACHEE

If you're walking out with us, let us know where by DMing @georgiayouthco.

@georgiayouthco



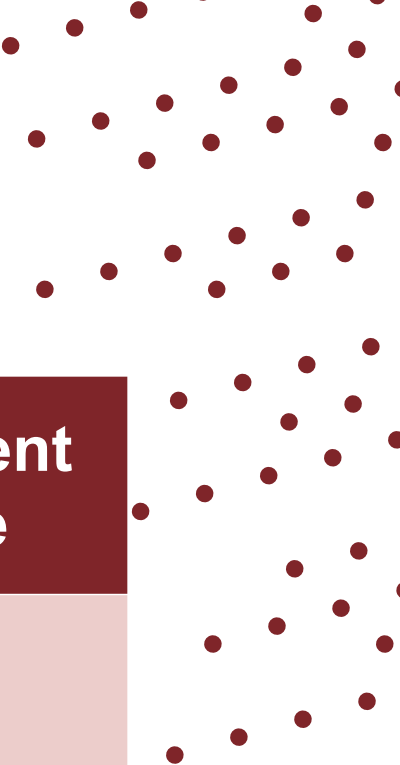
GRADUATES

	2020	2021	2022	2023	2024
In State	324	309	324	312	297 (68%)
C. Tech	18	25	30	23	31
KSU	115	105	110	97	94 (21%)
UGA	66	29	60	66	46 (10%)
G. Tech	9	19	22	18	15



LHS DEMOGRAPHICS

	Enrollment	Hispanic	Asian	Black	White	Gifted	SWD	Transient Rate
2020	2066	10%	8%	7%	71%	38%	12%	
2021	1971	10%	8%	7%	69%	39%	10%	
2022	1951	10%	8%	7%	67%	38%	11%	7%
2023	1953	11%	7%	7%	68%	38%	10%	7%
2024	2004	11%	8%	7%	67%	40%	10%	5%



DISCIPLINE SUMMARY

Policy Distribution

Skipping	105 (L)
Tardy	75 (L)
Disruption	37 (L)
Insubordination	82 (H)
Vape	20

Action Distribution

Warning	154 (L)
OSS	66 (L)
ISS	54 (L)
Saturday Sch	45 (H)
Arrest	16 (H)

Violation by Grade

9 th	199 (H)
10 th	158 (L)
11 th	80 (L)
12 th	52 (L)

OSS Days By Grade

9 th	217 (L)
10 th	62 (L)
11 th	96 (H)
12 th	53 (L)



2023-2024 EOC COMPARISON DATA

US HISTORY

School Name	Number Tested	Mean Scale Score	% Beginning Learner	% Developing Learner	% Proficient Learner	% Distinguished Learner	% Developing Learner & Above	% Proficient Learner & Above
LASSITER HIGH SCHOOL	333	571	3.3	14.7	44.1	37.8	96.7	82.0
WALTON HIGH SCHOOL	413	569	1.9	10.2	53.8	34.1	98.1	87.9
LAMBERT HIGH SCHOOL	423	564	2.1	16.1	51.1	30.7	97.9	81.8
JOHNS CREEK HIGH SCHOOL	277	562	4.7	20.6	41.2	33.6	95.3	74.7
POPE HIGH SCHOOL	227	559	2.6	17.2	55.1	25.1	97.4	80.2
CHATTAHOOCHEE HIGH SCHOOL	260	556	5.8	21.9	43.8	28.5	94.2	72.3
HARRISON HIGH SCHOOL	399	548	8.8	25.1	45.1	21.1	91.2	66.2
SOUTH FORSYTH HIGH SCHOOL	286	543	5.9	27.3	47.2	19.6	94.1	66.8
CREEKVIEW HIGH SCHOOL	340	539	6.8	28.5	51.8	12.9	93.2	64.7
NORTHVIEW HIGH SCHOOL	246	534	9.3	34.1	42.7	13.8	90.7	56.5
NORTH GWINNETT HIGH SCHOOL	527	531	9.5	33.6	45.5	11.4	90.5	56.9
MILTON HIGH SCHOOL	288	524	15.3	37.2	35.4	12.2	84.7	47.6
ROSWELL HIGH SCHOOL	348	516	18.4	36.8	36.5	8.3	81.6	44.8
CAMBRIDGE HIGH SCHOOL	198	515	17.2	41.4	34.3	7.1	82.8	41.4

AMERICAN LITERATURE

School Name	Number Tested	Reading Status^		Mean Scale Score	% Beginning Learner	% Developing Learner	% Proficient Learner	% Distinguish ed Learner	% Developing Learner & Above	% Proficient Learner & Above
WALTON HIGH SCHOOL	683	3.1	96.9	576	1.3	8.8	52.6	37.3	98.7	89.9
LAMBERT HIGH SCHOOL	781	6.4	93.6	570	2.7	14.2	48.4	34.7	97.3	83.1
SOUTH FORSYTH HIGH SCHOOL	574	4.4	95.6	567	2.6	16.2	49.1	32.1	97.4	81.2
NORTHVIEW HIGH SCHOOL	424	8.7	91.3	565	4.2	16.0	46.5	33.3	95.8	79.7
LASSITER HIGH SCHOOL	489	6.5	93.5	565	3.5	15.5	51.1	29.9	96.5	81.0
POPE HIGH SCHOOL	432	5.3	94.7	564	3.0	16.9	50.9	29.2	97.0	80.1
CHATTAHOOCHEE HIGH SCHOOL	472	8.1	91.9	561	4.4	18.0	47.2	30.3	95.6	77.5
JOHNS CREEK HIGH SCHOOL	485	8.7	91.3	559	4.7	17.9	50.5	26.8	95.3	77.3
CAMBRIDGE HIGH SCHOOL	373	11.5	88.5	556	7.5	17.2	48.8	26.5	92.5	75.3
NORTH GWINNETT HIGH SCHOOL	774	8.3	91.7	554	6.5	20.5	48.6	24.4	93.5	73.0
MILTON HIGH SCHOOL	534	10.5	89.5	553	6.7	19.5	51.5	22.3	93.3	73.8
HARRISON HIGH SCHOOL	592	11.5	88.5	551	5.9	22.3	48.0	23.8	94.1	71.8
CREEKVIEW HIGH SCHOOL	506	14.6	85.4	544	9.5	22.9	47.4	20.2	90.5	67.6
ROSWELL HIGH SCHOOL	514	23.7	76.3	529	17.3	21.8	46.5	14.4	82.7	60.9

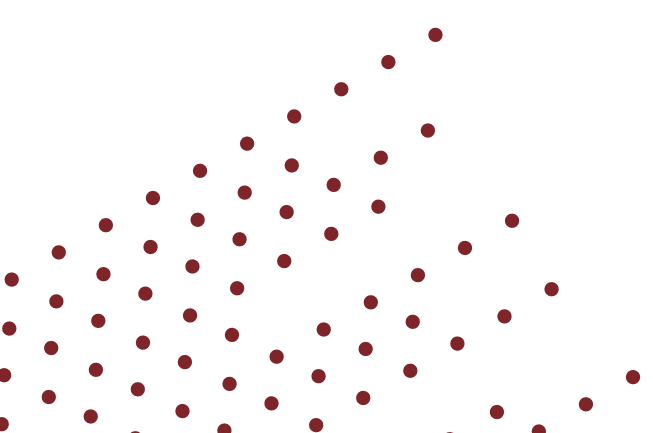
BIOLOGY

School Name	Number Tested	Mean Scale Score	% Beginning Learner	% Developing Learner	% Proficient Learner	% Distinguished Learner	% Developing Learner & Above	% Proficient Learner & Above
LAMBERT HIGH SCHOOL	877	595	3.6	13.7	40.0	42.6	96.4	82.7
WALTON HIGH SCHOOL	1,119	595	3.6	9.7	47.2	39.5	96.4	86.7
SOUTH FORSYTH HIGH SCHOOL	664	590	7.7	12.5	38.9	41.0	92.3	79.8
LASSITER HIGH SCHOOL	516	590	3.1	12.2	43.4	41.3	96.9	84.7
NORTHVIEW HIGH SCHOOL	372	586	7.5	16.1	37.4	39.0	92.5	76.3
MILTON HIGH SCHOOL	489	581	5.5	12.7	49.3	32.5	94.5	81.8
POPE HIGH SCHOOL	419	577	3.8	13.4	54.7	28.2	96.2	82.8
JOHNS CREEK HIGH SCHOOL	470	575	8.7	19.1	40.4	31.7	91.3	72.1
CHATTAHOOCHEE HIGH SCHOOL	413	574	10.2	15.7	42.1	32.0	89.8	74.1
NORTH GWINNETT HIGH SCHOOL	581	566	9.0	14.8	50.1	26.2	91.0	76.2
HARRISON HIGH SCHOOL	567	565	9.9	18.7	45.9	25.6	90.1	71.4
CAMBRIDGE HIGH SCHOOL	411	563	9.0	17.0	52.3	21.7	91.0	74.0
CREEKVIEW HIGH SCHOOL	527	553	8.3	21.6	54.3	15.7	91.7	70.0
ROSWELL HIGH SCHOOL	499	540	19.0	21.6	41.3	18.0	81.0	59.3

ALGEBRA 1 EOC

	Year 21/22	Year 22/23	Year 23/24
% Passing	91	88	N/A
% Level 4	18	16	N/A
% 3 and 4	68	62	N/A
% Sped Passing	64	76	N/A

- Scores are not published yet



BIOLOGY EOC

	Year 21/22	Year 22/23	Year 23/24
% Passing	94%	95%	97%
% Level 4	41%	46%	41%
% 3 and 4	87%	84%	84%
% Sped Passing	76%	84%	85%

% Passing

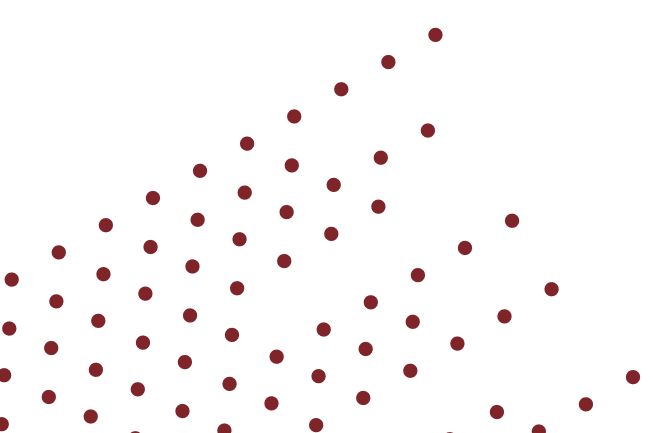
Lassiter	97%
Walton	96%
Pope	96%
Harrison	91%

% Exceeds

Lassiter	41%
Walton	40%
Pope	28%
Harrison	26%

%3/4's

Walton	87%
Lassiter	84%
Pope	80%
Harrison	70%



US HISTORY EOC

	Year 21/22	Year 22/23	Year 23/24
% Passing	91%	92%	97%
% Level 4	31%	15%	38%
% Level 3 and 4	81%	73%	82%
% Sped Passing	77%	79%	93%

% Passing

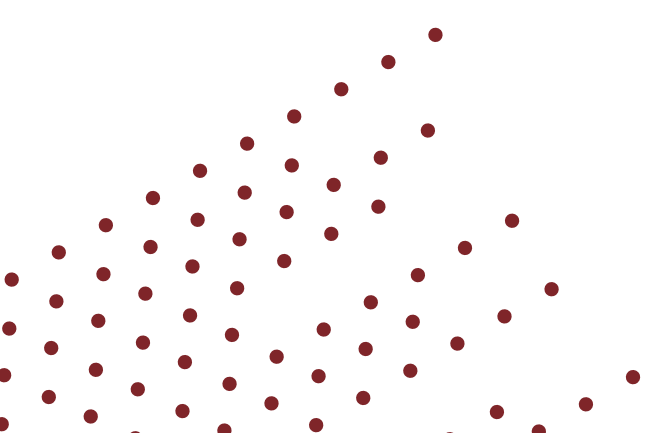
Walton	98%
Lassiter	97%
Pope	97%
Harrison	91%

% Exceeds

Lassiter	38%
Walton	34%
Pope	25%
Harrison	21%

%3/4's

Walton	88%
Lassiter	82%
Pope	80%
Harrison	65%



AMERICAN LIT EOC

	Year 21/22	Year 22/23	Year 23/24
% Passing	96%	95%	96%
% Level 4	13%	18%	30%
% Level 3 and 4	84%	72%	81%
% Sped Passing	83%	81%	80%

% Passing

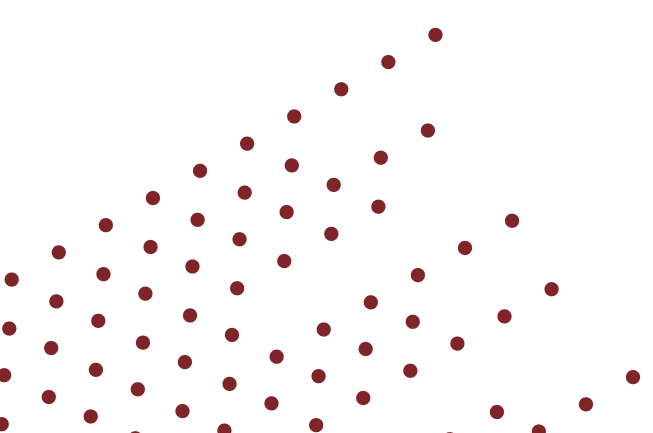
Walton	99%
Pope	97%
Lassiter	96%
Harrison	95%

% Exceeds

Walton	37%
Lassiter	30%
Pope	29%
Harrison	24%

% 3/4's

Walton	90%
Lassiter	81%
Pope	80%
Harrison	73%



SAT SCORES

School	2021	2022	2023
Lassiter	1176	1186	1183 (366)
Pope	1205	1178	1179 (342)
Walton	1275	1255	1255 (474)
Harrison	1172	1119	1121
Georgia	1086	1052	1045
National	1060	1030	1003



ACT SCORES

School	2021	2022	2023
Lassiter	26	24.7	24.4 (212)
Pope	25.3	25	24.5 (220)
Walton	27.6	26	25.8 (285)
Harrison	24.7	23.4	23.1 (189)
Georgia	22.6	21.6	21.3
National	20.3	19.8	19.5



STRATEGIC PLAN GOALS

Increase the percentage of 10th grade students (66%) meeting the college and career readiness on the math portion of the PSAT. [The PSAT/NMSQT Math Test - SAT Suite | College Board](#)

Increase the percentage of 10th grade students (84%) meeting the college and career readiness on the ELW portion of the PSAT. [The PSAT/NMSQT Writing and Language Test - SAT Suite \(collegeboard.org\)](#)

Decrease the percent of Beginning Learners and Developing Learners by 5% in each EOC content area



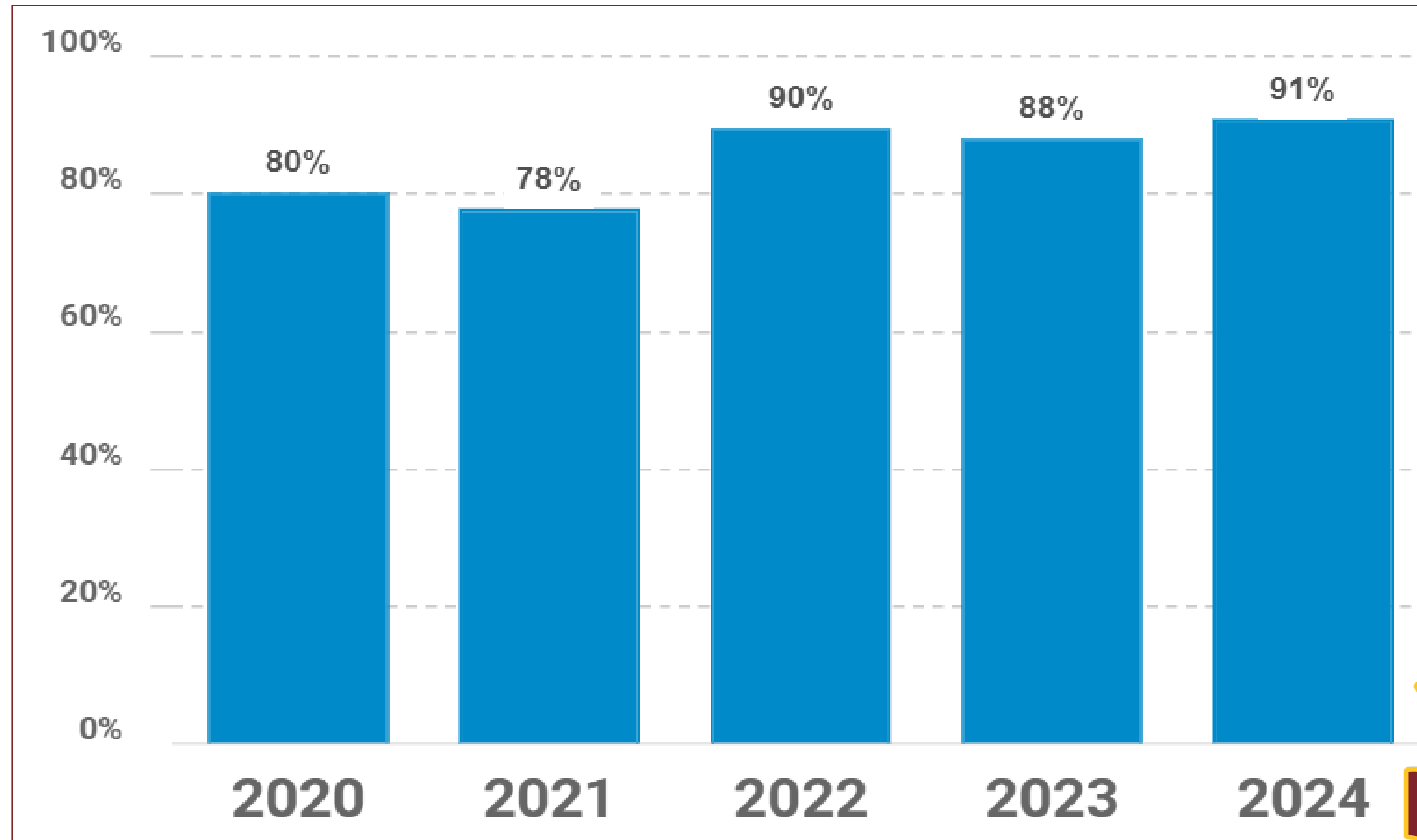
AP EXAMS



SCHOOL SUMMARY

	2020	2021	2022	2023	2024
Total AP Students	689	660	663	699	755
Number of Exams	1,608	1,500	1,681	1,807	2,127
AP Students with Scores 3+	553	514	594	616	687

ADVANCED PLACEMENT



AP SCORES

Exam	# of Exams	% 3 or Better	% 3 or Better Global
2D Art	39	97% (3.7)	83%
3D Art	5	80% (3.6)	72%
Art History	16	100% (4.5)	63%
Biology	29	96 % (3.1)	68%
Precalc	190	97% (4.1)	75%
Calc AB	63	93 (4.2)	64%
Calc BC	49	98%(4.5)	80%
Chemistry	62	96 % (3.5)	75%
Com. Sci	48	54% (2.6)	66%
C Prin	22	77% (3.2)	65%
Drawing	9	100% (3.5)	84%
Lang	224	78% (3.3)	54%
Lit	168	92% (3.7)	72%
Env Sci	30	70% (3.1)	54%
French	8	75% (2.8)	71%



AP SCORES

Exam	# of Exams	% 3 or Better	% 3 or Better Global
Human	60	90% (3.9)	56%
Econ	154	64% (2.9)	63%
Music	12	91% (3.5)	61%
Physics	141	46% (2.5)	46%
Physics 2	12	66% (2.9)	68%
Physics E/M	4	75% (3.7)	67%
Physics M	11	81% (3.5)	75%
Psy	116	75% (3.3)	61%
Research	29	93% (3.4)	85%
Seminar	41	100% (4.4)	89%
Spanish	28	85% (3.3)	83%
Stats	59	94% (4.1)	62%
Gov	189	93% (4.0)	73%
US	124	97% (3.7)	72%
World	155	95% (4.1)	64%





ADVANCED PLACEMENT

% of students in Georgia who score 3 or higher on AP exams = 61%

% of students globally who score 3 or higher on AP exams = 61%

% of Lassiter students who score 3 or higher on AP exams = 91%

Freshman Profile

UGA

4.0 GPA

1400 SAT

31 ACT

7 to 12 AP Classes

GeorgiaTech

4.0+ GPA

1400+ SAT

33 ACT

9 to 12 AP Classes

Kennesaw State

3.3 GPA

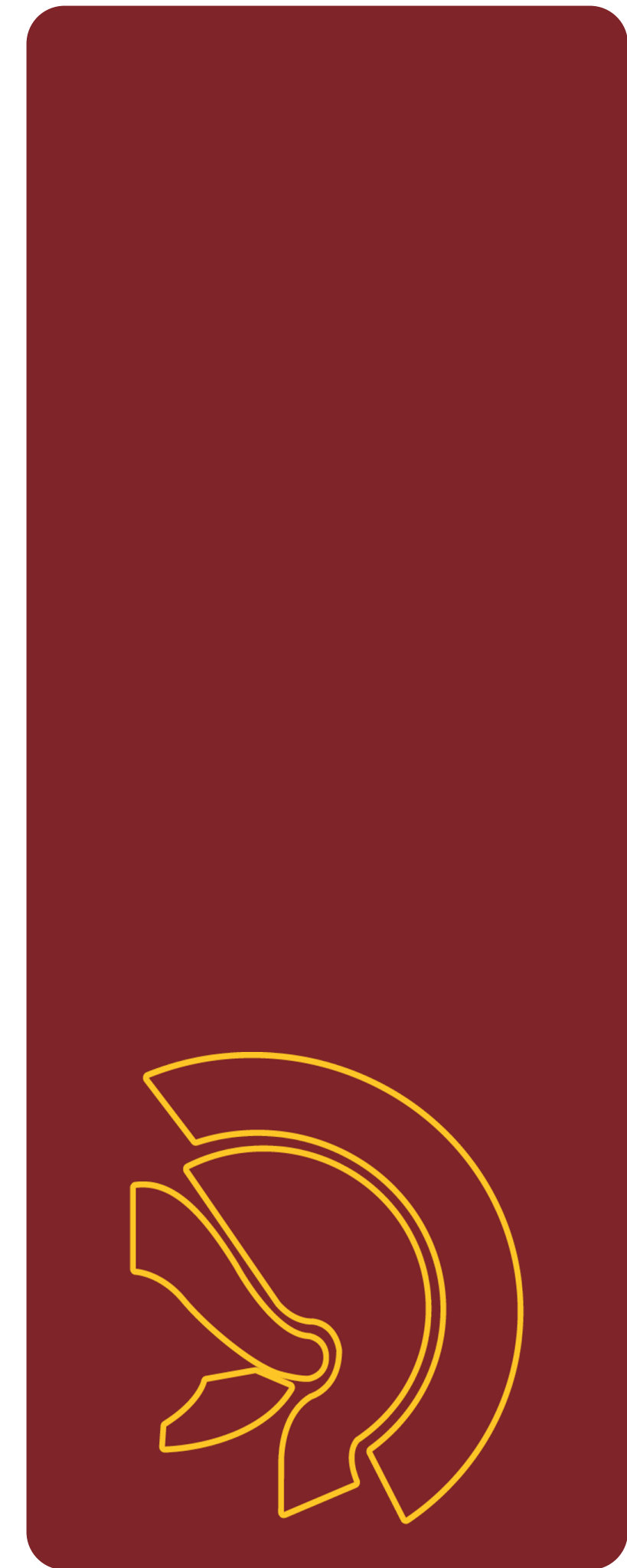
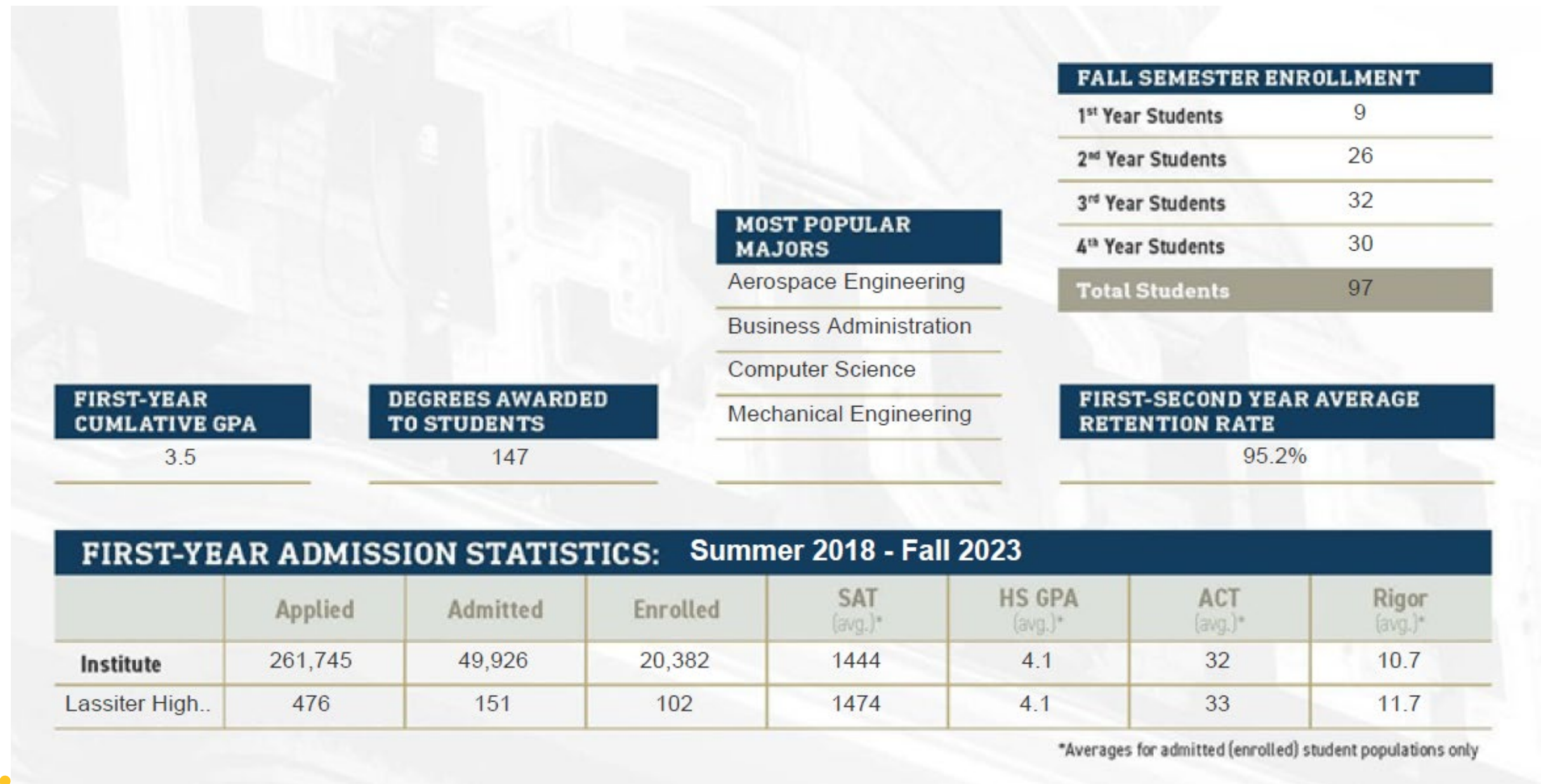
1150 SAT

23 ACT

Students who score 3 or higher typically experience greater academic success in college and have a higher graduation rate.

We always want to make sure that we are challenging students to take the higher level more competitive class.

College Profiles



School Updates

- Expect Respect
 - **Establishing a schoolwide expectation for common respect, teaching what that means, and ensuring that all students and faculty and staff members share in the responsibility of making schools respectful settings can make a difference**

August

- 27 – Lesson 1 – Introduction to “Expect Respect”.

September

- 3 – Lesson 2 (shorter) **Bullying – Identify and Define**
- 10 - Lesson 3 (longer) **Hate Speech – Define, identify**
- 17 - Lesson 4 (shorter)- **Athletic events**

October

- 22 – Lesson 5 - (longer) **Cyber Bullying**

November

- 12 - Lesson 6 – (Shorter) - **Closing, Recap**



Upcoming Dates

- 9/20: Homecoming, Pep Rally, Parade
 - Week of 9/23: Fall Break
 - 9/30: Financial Aid Night
 - 10/9: PSAT and Senior Breakfast
 - 10/26: Fall Dance
 - 11/5: Election Day (Student Holiday/Staff Day)
-
- Next Principal Advisory Council Meeting: Tuesday, December 10

