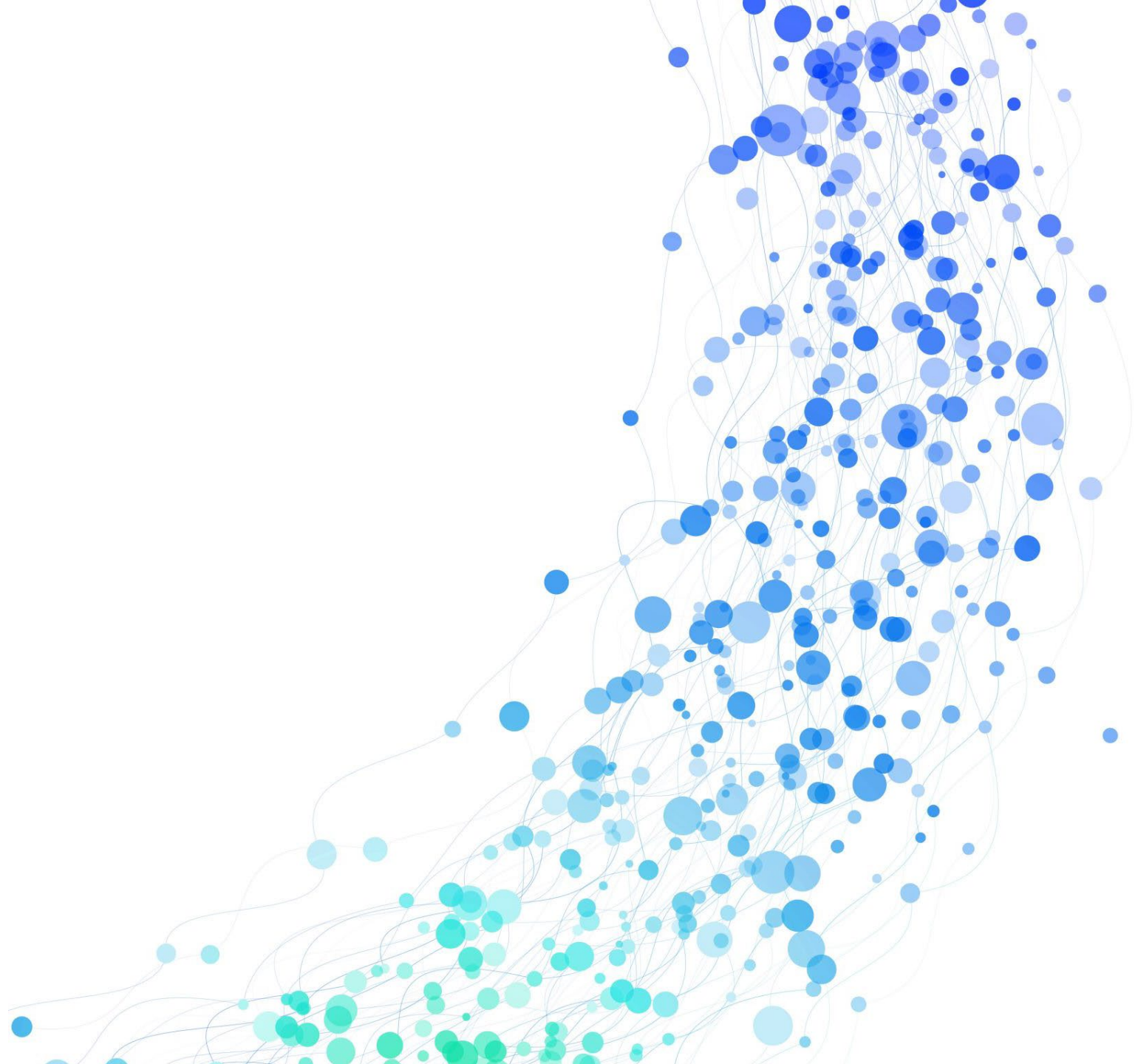


DUAL ENROLLMENT PRESENTATION

Hillgrove High School
Spring 2024



AGENDA

What is Dual Enrollment?



How to Apply



Important Websites

WHAT IS DUAL ENROLLMENT?



Dual Enrollment (DE) is a Georgia funded program that allows high school students to take college courses that can simultaneously count toward high school and college requirements.

WHO IS ELIGIBLE?

10th graders

- Students in the 10th grade may enroll in Career, Technical and Agricultural education (CTAE) courses at a participating TCSG institution only.

High-achieving 10th graders

- Students in the 10th grade with an SAT score of 1200 or an ACT score of 26 prior to the term may enroll in any approved dual enrollment courses at a TCSG, USG or private eligible participating postsecondary institution.

11th and 12th graders

- Students in the 11th or 12th grade may take any approved dual enrollment courses at an eligible participating postsecondary institution (USG, TCSG or private).

No Residency Requirement (but there is for HOPE and HOPE Career Grant)

Core academic areas used in the high school HOPE scholarship calculation (includes ALL English, math, science, social studies & world/foreign languages)

Career, Technical And Agricultural Education (CTAE) courses aligned with the GADOE career clusters and pathways

The course directory is in the dual enrollment section on GAFutures

WHAT CLASSES
CAN I TAKE?

TYPES OF DUAL ENROLLMENT

Option A

- The largest dual enrollment (DE) program offered.
- Student will complete the state required 23 credits to graduate and the required end of course assessments
- Some of the high school requirements would be taken through DE
- College courses will be taken on the college campus or online from home, unless your school offers DE courses on their campus.

Accelerated Career Diploma

- Alternative path to a high school diploma
- Designed for those who have already chosen a career path in which they will be ready to work upon earning two technical certificates or a technical diploma
- Must complete the 9 specific required high school credits and end of course assessments
- Will graduate with the necessary credentials to move on to their chosen path in the world of work
- Will not meet criteria to attend a traditional college upon high school graduation

FULL-TIME VS PART-TIME

Full-Time

- A full time DE student takes 12-15 hours of credit at the college
 - (4-5 classes at the college)
- No classes are taken at the high school or through CVA or GAVS
- MUCH easier to schedule – no conflicts with the high school classes
- More challenging to get high school information and be involved with high school events

Part-Time

- Students must take enough courses to total at least 4.0 units of HS credit each semester
- Absences and tardies ARE NOT EXCUSED!
 - You MUST factor in extra time for parking, walking to/from class, etc.
- Schedules may conflict, despite your best efforts – you may need to adjust your schedule.
 - Students MUST BE FLEXIBLE!
- Your high school classes come first when it comes to scheduling.

WHAT IS COVERED?

It's Free!

Includes **REQUIRED** Books
and Fees

Funding up to 30
semester/45 quarter
hours; *possibility for
more - CTAE courses with
the HOPE Career Grant/
HOPE Scholarship – SB86

Does not count against
HOPE Cap Hours

DO DE CLASSES TRANSFER TO OTHER COLLEGES/ UNIVERSITIES?

You can track transferability of courses through gatransfer.org

You can also check with the individual colleges you'd like to apply to.

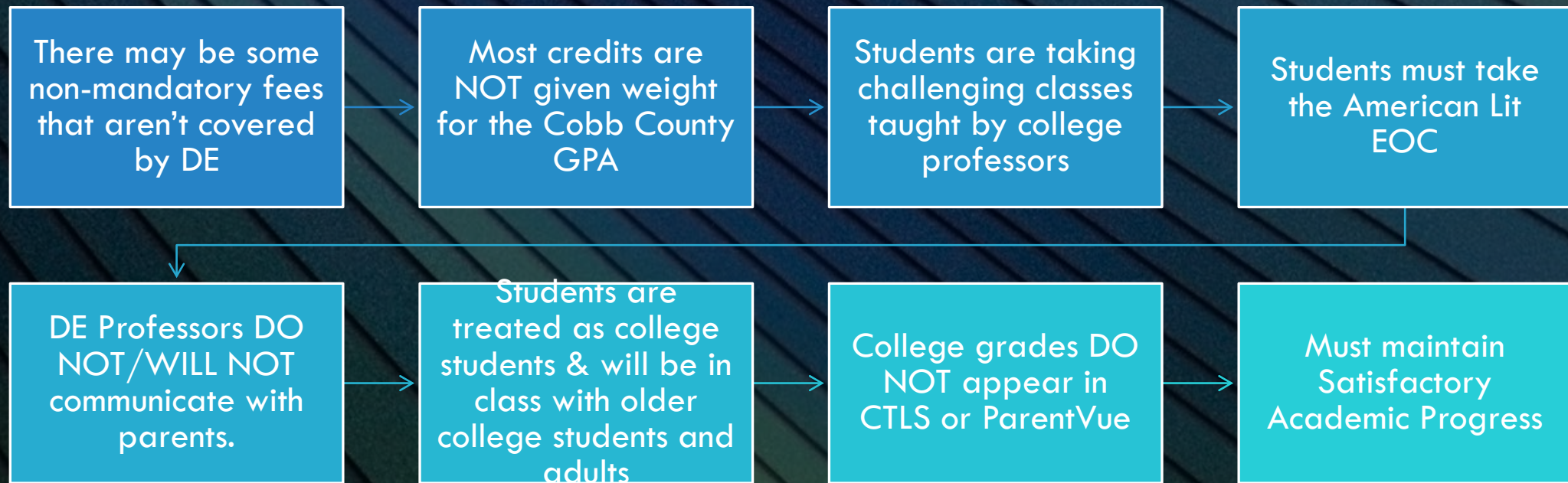
CAN I PARTICIPATE IN EXTRACURRICULARS?

Yes!

It is the student's responsibility to ensure extracurriculars don't interfere with college courses or attendance

DE professors are not required to give makeups or alternate assignments

THINGS TO CONSIDER



MORE THINGS TO CONSIDER

College and high school calendars (thus, breaks) often DO NOT align.

Some competitive colleges may consider AP to be more rigorous

Credit transferability is not guaranteed

Special Student Services must be arranged by the STUDENT directly with the college; they will not communicate with the parent, unless a release is signed by the student.

MUST provide your own transportation.

Must factor in travel time, traffic, changing bell schedules, etc.

MORE THINGS TO CONSIDER

Lack of daily interaction with friends may impact relationships, school involvement, etc.

The student may miss high school announcements and information distributed in homeroom.

Students **MUST** be on-time and attend **ALL** classes regularly; this includes both high school classes and DE classes.

If you withdraw from a course, it is a 10 on the transcript. After 2 withdrawals, you are dismissed from the program. There are no retakes.

WHO IS A GOOD FIT FOR DUAL ENROLLMENT?

Organized

Willing, eager,
and able to take
initiative

Clear about the
reason for their
interest in DE

Mature

A self-advocate

Flexible

A good time
manager

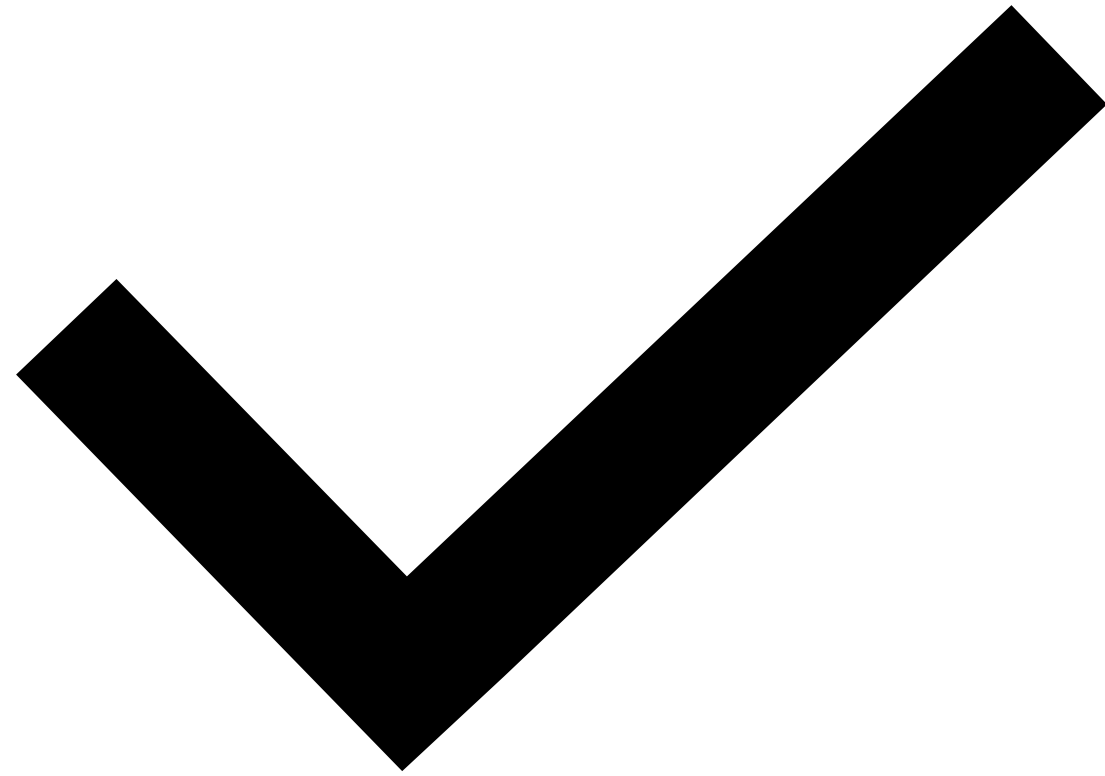
Eligible for
admission to the
college

Have reliable
transportation and
parking at both the
college and high
school

Respond to and initiate
communications with the
college and high school in
a timely manner (within 24
hours or less) – **check your
email!**

**OK, I'M READY!
HOW DO I APPLY?**





1. ATTEND A HAWK
HOUR OR OTHER
HILLGROVE DE
PRESENTATION SESSION

2. RESEARCH TO FIND THE BEST FIT FOR YOU

Check admissions requirements

Impact to GPA/HOPE

DE vs AP

Day-to-day logistics

Driving/parking

Course transferability, etc.

3. SUBMIT THE COLLEGE'S DE APPLICATION

Found on the college's website



4. IF REQUIRED,
SUBMIT OFFICIAL
HS TRANSCRIPT

Email

Natasha.Mitchell@cobbk12.org

Do not order through MPP

*Chattahoochee Tech does not
require a transcript

5. IF REQUIRED, TAKE THE SAT/ACT/ACCUPLACER AND SUBMIT SCORES

SAT – www.collegeboard.org



ACT – www.act.org



Accuplacer – schedule directly with the institution



Send AP scores to exempt intro courses

www.gafutures.org

Both Student and
Parent must sign

6. SUBMIT THE DE FUNDING APPLICATION

7. COMPLETE THE CCSD DE LOCAL SCHOOL AGREEMENT AND ADVISEMENT FORM

Electronically complete forms

Forms can be found on the Hillgrove DE page
<https://bit.ly/thegrovede>

Who is Your School Counselor?

Ms. Berry
(A - Con)



Dr. Wynn
(Coo - Gom)



Ms. Calloway
(Gon - Ko)



Dr. Boyle
(Kp - Od)



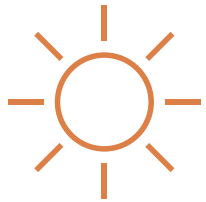
Ms. Davis
(Oe - Sh)



Dr. Amand
(Si - Z)

**DEADLINE FOR THE 2024-2025 SY – APRIL 10TH
OUR DEADLINE IS NOT THE COLLEGE'S
DEADLINE...YOU MUST KNOW YOUR DEADLINES!!!**

**WE SCHEDULE FOR THE YEAR,
NOT FOR THE SEMESTER**



Summer 2024



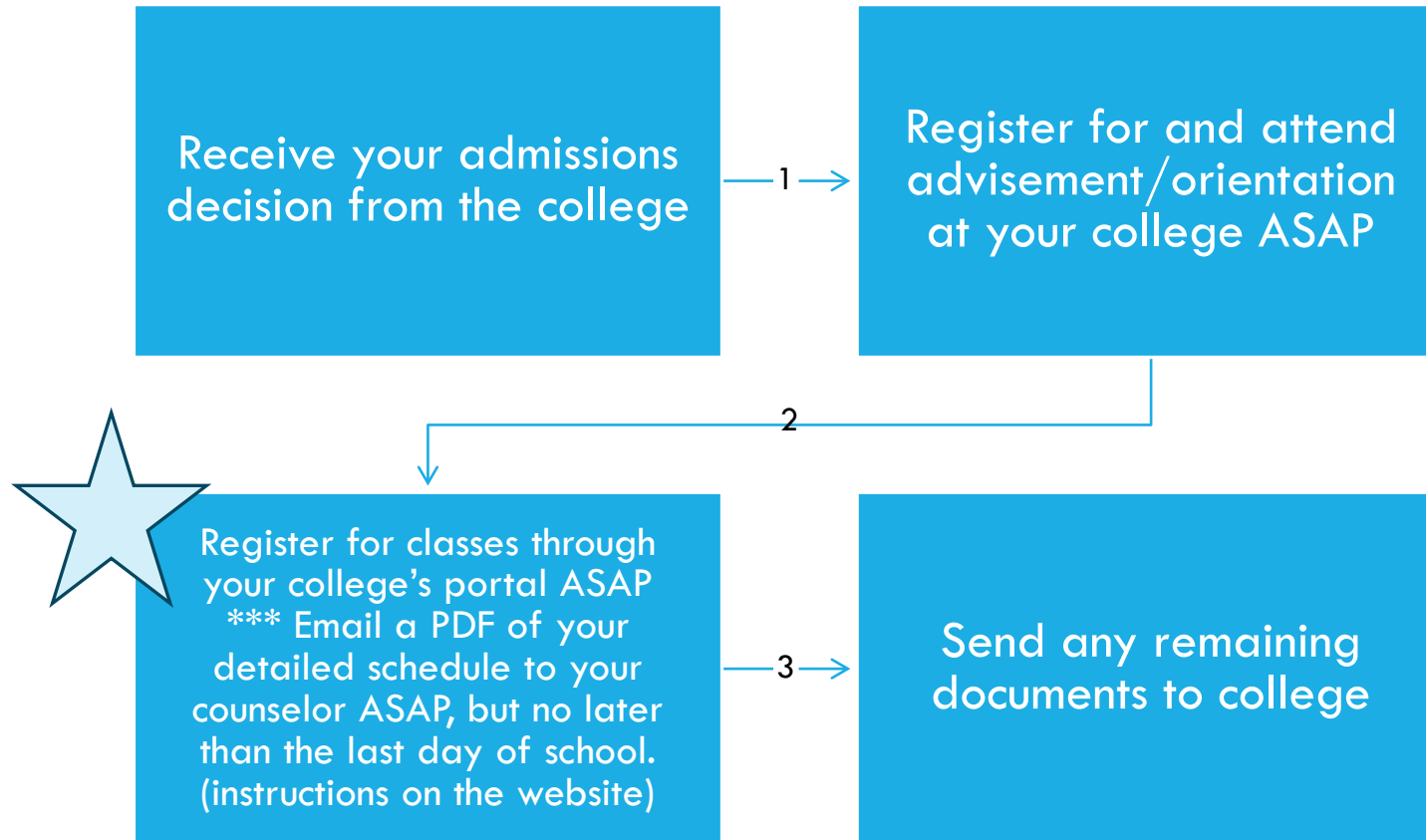
Fall 2024



Spring 2025

You must have completed your entire application process and have scheduled an appointment with your School Counselor for Advisement by April 10th.

LAST STEPS AFTER COMPLETING THE ADVISEMENT SESSION



Dual Enrollment Presentation Session Sign In



<https://bit.ly/thegrovevirtualdesignin>



Hillgrove's DE page -
<https://bit.ly/thegrovede>



GA Futures -
www.gafutures.org



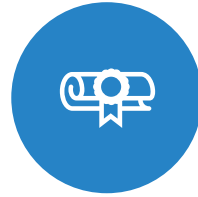
GA Dept of Education -
www.gadoe.org



Gatransfer -
www.gatransfer.org



University System of GA -
www.usg.edu



Technical College System
of GA - www.tcsu.edu

RESOURCES